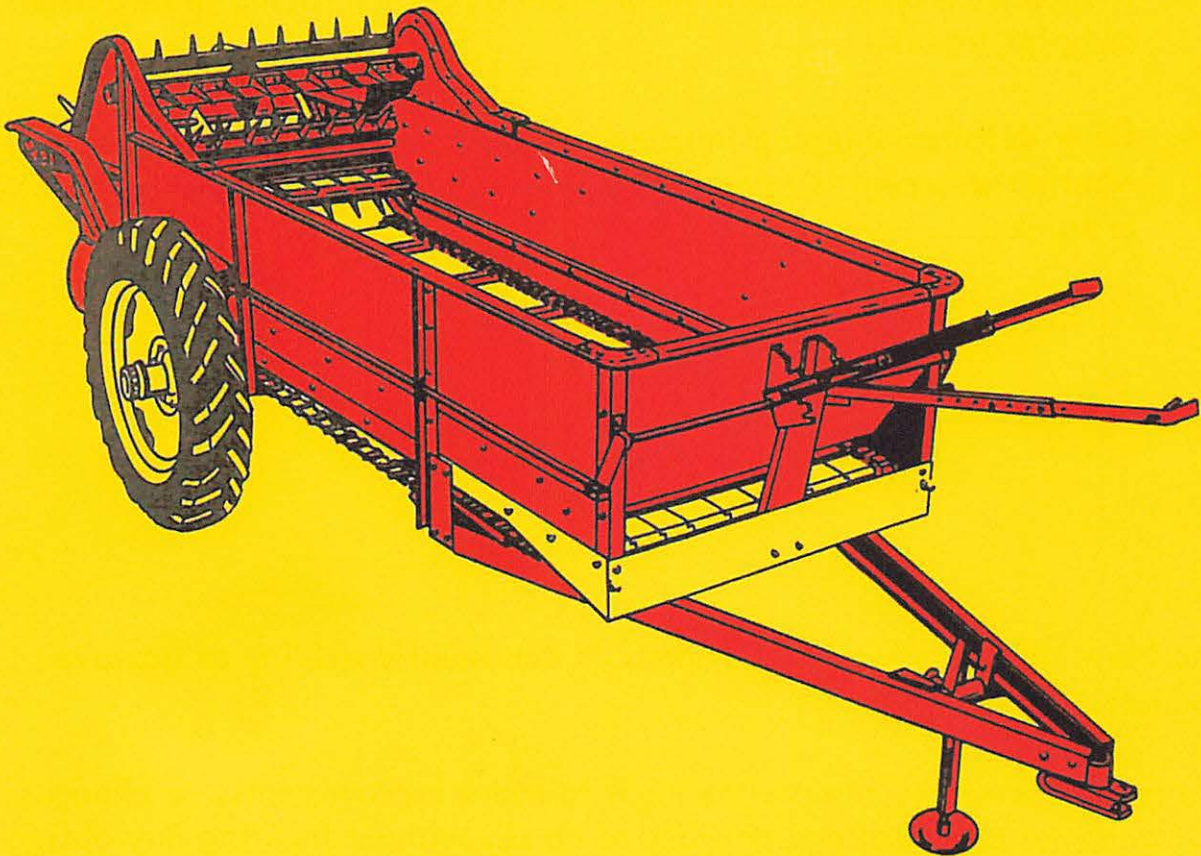




SERVICE PARTS CATALOG
MANURE SPREADERS
MODEL 200 & 202 GROUND DRIVEN
MODEL 220, 221 & 222 P.T.O.

(ISSUE 5-61)



NEW HOLLAND

"First in Grassland Farming"

ORDERING PARTS

When ordering service parts follow the instructions listed below. By so doing, you will be assured of receiving the correct part in the shortest possible time.

1. Give the model and serial number .
2. Write the complete part number as well as the description of the part.
3. Whenever the terms "left and right, or L and R," are used herein, it should be understood to mean from a position facing in direction of baler travel.
4. Give detailed shipping instructions, that is: Railroad station, county; whether shipment is to go by parcel post, air express, express, freight or truck.

The New Holland Machine Company is continually striving to improve its products.

We must, therefore, reserve the right to make improvements, or changes, when it becomes practical and possible to do so, without incurring any obligation to make changes, or additions, to the equipment sold previously.

CONTENTS

ASSEMBLY	MODEL NO.	PAGE NO.
Hitch, Tongue Supports, Angles and Jack Group	200, 202, 220, 221, 222	4, 5, 6
Main Frame, Boards, Apron and Drive Shaft	200, 202, 220, 221, 222	7, 8
End Gate, Side Sheets, Beater Shield and Supports	200, 202, 220, 221, 222	10, 11, 12, 13
Upper and Main Beaters and Widespread Group	200, 202, 220, 221, 222	14, 15, 16
Feed Lever Controls	200, 202 220, 221, 222	17, 18 31
Left Side Lifts, Sprocket and Chain	200, 202	19, 20
Clutch, Propeller Tube and Gearbox	220, 221, 222	27, 28
Gearbox	220, 221, 222	29, 30
Right Side Control Arms, Pawls and Ratchet Wheel	200, 202	21, 22
Pawls, Ratchet Wheel, Crank and Sprocket	220, 221, 222	32, 33
Axle Group	200, 202 220, 221, 222	23, 24 34
P.T.O. Drive Group and Guards	220, 221, 222	25, 26
Cleanout Drive Group	221, 222	35, 36
Decal Set	200, 202 220, 221, 222	34 34

MODEL 200 & 202 MANURE SPREADER ATTACHMENT

83228 Extension Handle Attachment	37
83397 Floor Extension Attachment	44

MODELS 200, 202, 220, 221, & 222 MANURE SPREADER ATTACHMENTS

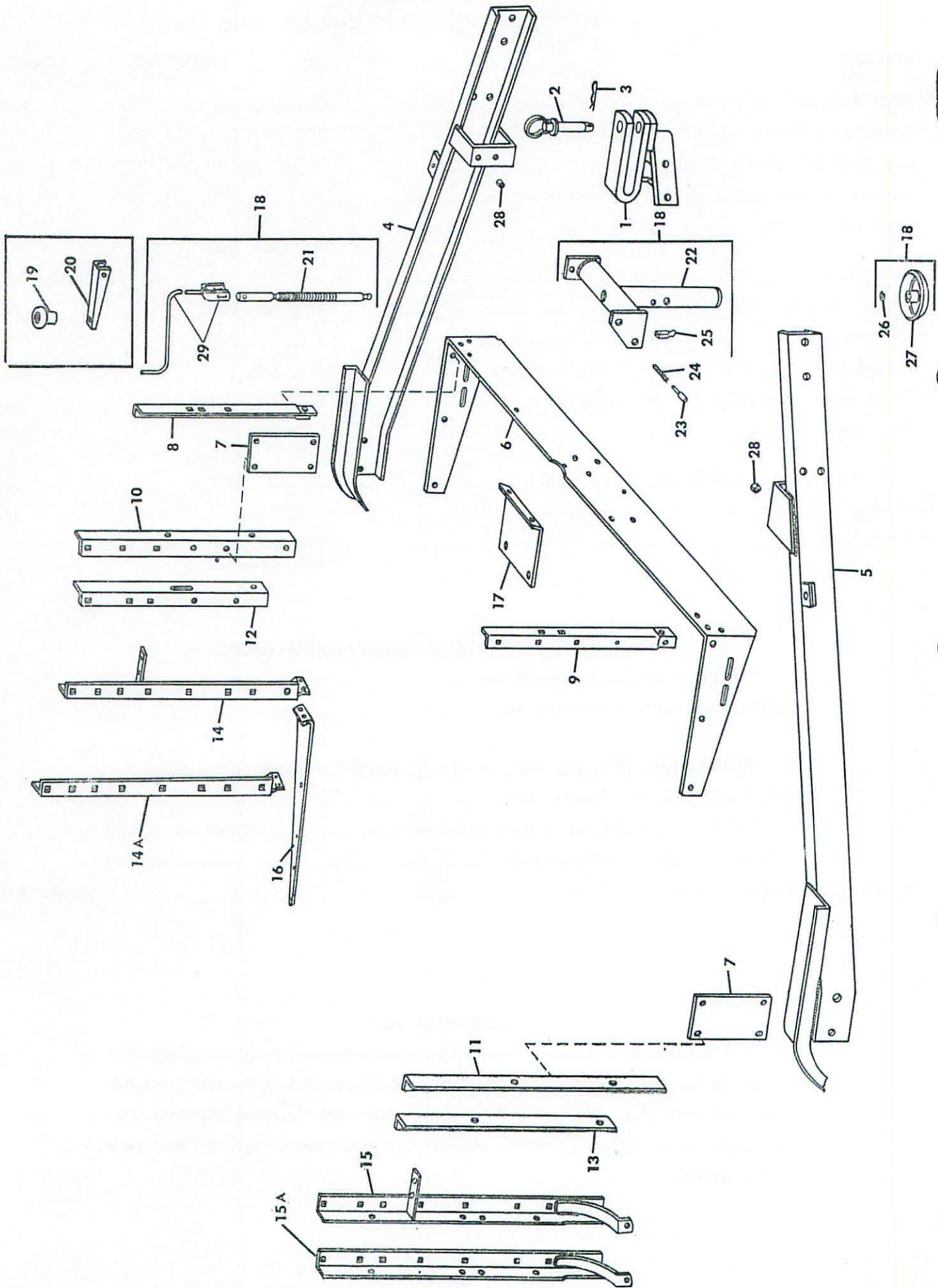
83694 Fine Manure Attachment	38
99228 Fluid End Gate Attachment (includes)	39, 40, 41, 42, 43
99702 Fluid End Gate Attachment	45, 46, 47, 48

Numerical Parts Index	49, 50, 51, 52
------------------------------------	-----------------------

HARDWARE KEY

Throughout this manual you find common hardware, not illustrated, but listed in the description column. The service part immediately preceding a hardware listing is the part using these particular items for mounting purposes. This hardware is not included with the service part or assembly, when ordered as a replacement.

**MODELS 200, 202, 220, 221 & 222 MANURE SPREADERS
HITCH, TONGUE SUPPORTS, ANGLES, AND JACK**



MODELS 200, 202, 220, 221 & 222 MANURE SPREADERS

HITCH, TONGUE SUPPORTS, ANGLES, AND JACK

Ref. No.	Part No.	No. Used					Description
		200	202	220	221	222	
1	35853	1	1	1	1	1	Hitch Weld Assy. 4 87847 Cap Screw, Hex Hd. 1/2" x 1 1/4" 4 80679 Lockwasher 1/2" 4 84946 Nut 1/2"
2	34366	1	1	1	1	1	Hitch Pin
3	33778	1	1	1	1	1	Hairpin Cotter
4	47148		1		*1	1	Hitch Frame Assy., Left
4A	35855	1		1	**1		Hitch Frame Assy., Left
5	47147		1		*1	1	Hitch Frame Assy., Right
5A	35859	1		1	**1		Hitch Frame Assy., Right
6	50583	1	1	1	1	1	Hitch Support Weld Assy.
7	35957	2	2	2	2	2	Tongue Support 2 84890 Carr. Bolt 7/16" x 1" 2 87013 Carr. Bolt 7/16" x 1 1/4" 2 80374 Cap Screw, Hex Hd. 1/2" x 1" 2 87981 Cap Screw, Hex Hd. 5/8" x 1 1/2" (N.F.) 4 81547 Lockwasher 7/16" 2 80679 Lockwasher 1/2" 2 84057 Lockwasher 5/8" 4 84945 Nut 7/16" 2 84946 Nut 1/2" 2 87262 Nut 5/8"
8	49427	1	1	1	1	1	Side Angle Front, Left 1 84826 Carriage Bolt 5/16" x 3/4" 2 84867 Carriage Bolt 3/8" x 3/4" 1 80681 Lockwasher 5/16" 2 80680 Lockwasher 3/8" 1 84943 Nut 5/16" 2 84944 Nut 3/8"
9	49426	1	1	1	1	1	Side Angle Front, Right 2 84867 Carriage Bolt 3/8" x 3/4" 2 80680 Lockwasher 3/8" 2 84944 Nut 3/8"
10	49081	1	1	1	1	1	Tongue Support Angle, Left 4 80228 Carr. Bolt 3/8" x 3/4" 1 87173 Cap Screw, Hex Hd. 7/16" x 1" 4 80680 Lockwasher 3/8" 1 81547 Lockwasher 7/16" 4 84944 Nut 3/8" 1 84945 Nut 7/16"
11	49080	1	1	1	1	1	Tongue Support Angle, Right 4 80228 Carr. Bolt 3/8" x 3/4" 1 87173 Cap Screw, Hex Hd. 7/16" x 1" 4 80680 Lockwasher 3/8" 1 81547 Lockwasher 7/16" 4 84944 Nut 3/8" 1 84945 Nut 7/16"
12	49079	1	1	1	1	1	Side Angle Center, Left 4 80228 Carr. Bolt 3/8" x 3/4" 1 87173 Cap Screw, Hex Hd. 7/16" x 1" 4 80680 Lockwasher 3/8" 1 81547 Lockwasher 7/16" 4 84944 Nut 3/8" 1 84945 Nut 7/16"
13	49078	1	1	1	1	1	Side Angle Center, Right 1 87173 Cap Screw, Hex Hd. 7/16" x 1" 3 80228 Carr. Bolt 3/8" x 3/4" 3 80673 Lockwasher 3/8" 1 81547 Lockwasher 7/16" 3 84930 Nut 3/8" 1 84945 Nut 7/16"

CONTINUED

*Used on and above Serial No. 3478.

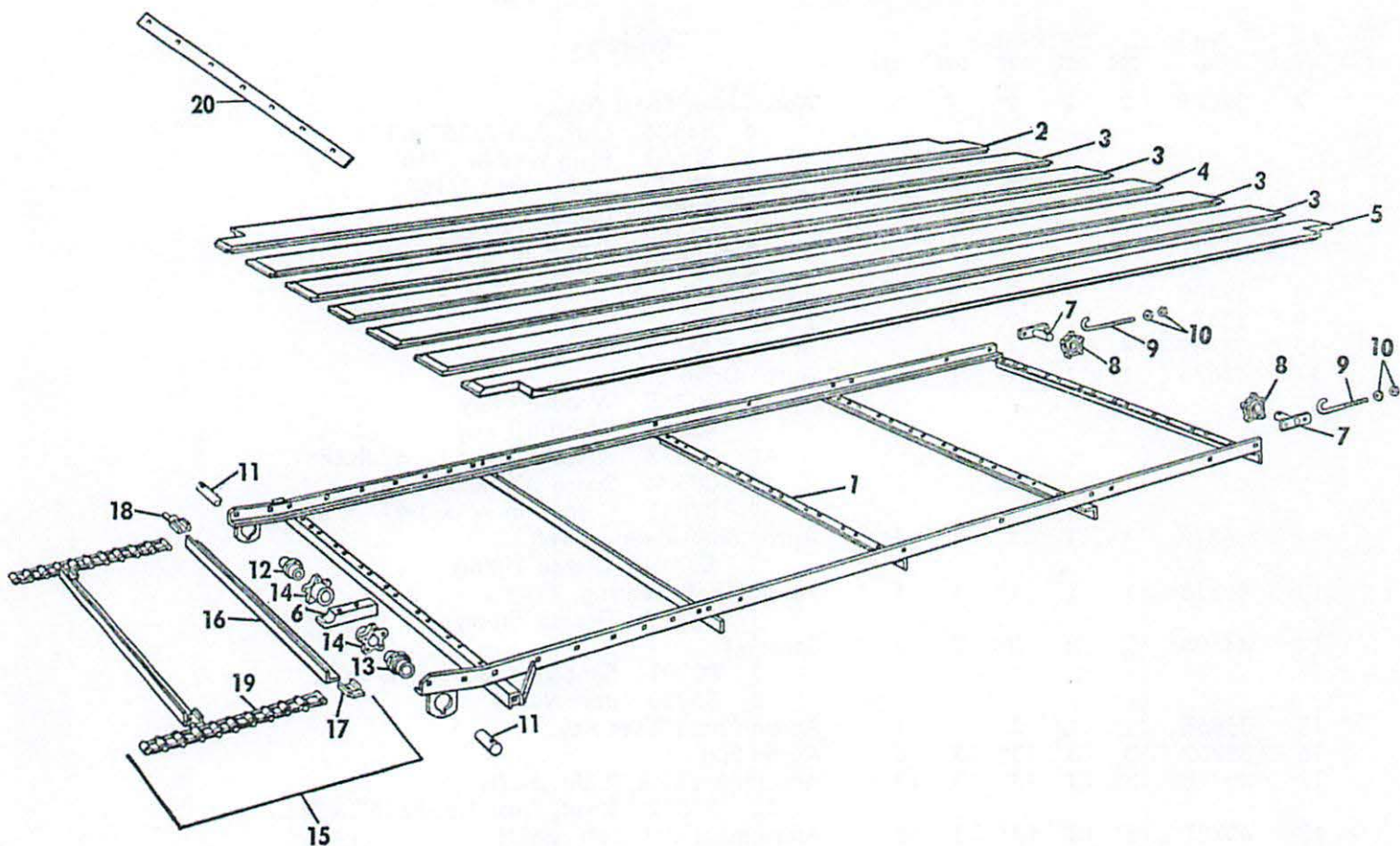
**Used on and below Serial No. 3477.

**MODELS 200, 202, 220, 221 & 222 MANURE SPREADERS
HITCH, TONGUE SUPPORTS, ANGLES, AND JACK (CONT'D.)**

Ref. No.	Part No.	No. Used					Description
		200	202	220	221	222	
14	35896	1		1	1		Arch Angle Weld Assy., Left 1 80365 Cap Screw, Hex. Hd. 3/8" x 5/8" 1 80673 Lockwasher 3/8" 1 80602 Nut 3/8"
14A	49093		1			1	Arch Angle Weld Assy., Left 1 80365 Cap Screw Hex Hd. 3/8" x 5/8" 1 84867 Carr. Bolt 3/8" x 3/4" 3 80218 Carr. Bolt 3/8" x 1" 5 80673 Lockwasher 3/8" 4 84943 Nut 3/8" 1 80602 Sq. Nut 3/8"
15	35952	1		1	1		Arch Angle Weld Assy., Right 1 80365 Cap Screw, Hex Hd. 3/8" x 5/8" 1 80673 Lockwasher 3/8" 1 80602 Nut 3/8"
15A	49092		1			1	Arch Angle Weld Assy., Right 1 80218 Carr. Bolt 3/8" x 1" 4 84867 Carr. Bolt 3/8" x 3/4" 1 80365 Cap Screw Hex Hd. 3/8" x 5/8" 1 87013 Carr. Bolt 7/16" x 1 1/4" 6 80673 Lockwasher 3/8" 1 81547 Lockwasher 7/16" 5 84930 Nut 3/8" 1 80602 Sq. Nut 3/8" 1 84945 Nut 7/16"
16	35962	1	1	1	1	1	Beater Support Brace 2 87847 Cap Screw, Hex Hd. 1/2" x 1 1/4" (N.F.) 4 80330 Cap Screw, Hex Hd. 5/16" x 3/4" 2 80679 Lockwasher 1/2" 4 80674 Lockwasher 5/16" 2 84952 Nut 1/2" 4 84929 Nut 5/16"
17	35963	1	1				End Gate Support 4 87149 Cap Screw, Hex Hd. 5/16" x 3/4" 4 80681 Lockwasher 5/16" 4 84943 Nut 5/16"
18	48919	1	1	1	1	1	Jack Assembly (includes Ref. No. 21 thru 27 plus Ref. No. 28.)
19	33781	1	1	1			Knob 1 80325 Cap Screw, Hex Hd. 3/8" x 2 1/2" 1 84294 Plain Washer 3/8" 1 84930 Nut 3/8"
20	33776	1		1	1		Handle 1 80326 Cap Screw, Hex Hd. 3/8" x 1 3/4" 1 80673 Lockwasher 3/8" 1 84930 Hex Nut 3/8"
21	33775	1		1	1		Screw Weld Assy.
21A	52267		1			1	Screw Weld Assembly
22	48947	1	1	1	1	1	Jack Weld Assy. 1 80710 Grease Fitting 2 87174 Cap Screw, Hex Hd. 7/16" x 1 1/4" 4 81541 Plain Washer 7/16" 2 81547 Lockwasher 7/16" 2 84945 Nut 7/16"
23	32469	1	1	1	1	1	Pin
24	32303	1	1	1	1	1	Spring
25	33780	1	1	1	1	1	Pin Lever 1 80741 Cotter Pin 1/8" x 1"
26	32172	1	1	1	1	1	Snap Ring
27	33777	1	1	1	1	1	Jack Base
28	33784	2	2	2	2	2	Split Spacer
29	48918		1			1	Crank Weld Assembly 1 80477 Cap Screw Hex Hd. 3/8" x 2" 1 80772 Locknut 3/8"

MODELS 200, 202, 220, 221 & 222 MANURE SPREADERS

MAIN FRAME, BOARDS, APRON, AND DRIVE SHAFT



Ref. No.	Part No.	No. Used					Description
		200	202	220	221	222	
1	59576	1	1	1	1	1	Main Frame Weld Assy. 4 87847 Cap Screw, Hex Hd. 1/2" x 1 1/4" 7 84306 Carr. Bolt 7/16" x 1" 2 80679 Lockwasher 1/2" 4 80672 Lockwasher 7/16" 4 84931 Nut 7/16" 2 84946 Nut 1/2"
2	35908	1	1	1	1	1	Floor Board, Left 1 87506 Rnd. Hd. Short Sq. Neck Bolt 7/16" x 1" 1 80672 Lockwasher 7/16" 1 84931 Nut 7/16" 10 84377 Rivet, Truss Hd. 1/4" x 1 1/4"
3	35905	4	4	4	4	4	Floor Board Intermediate 40 84377 Rivet, Truss Hd. 1/4" x 1 1/4"
4	35907	1	1	1	1	1	Floor Board Center 10 84377 Rivet, Truss Hd. 1/4" x 1 1/4"
5	35904	1	1	1	1	1	Floor Board, Right 1 87506 Rnd. Hd. Short Sq. Neck Bolt 7/16" x 1" 1 80672 Lockwasher 7/16" 1 84931 Nut 7/16" 10 84377 Rivet, Truss Hd. 1/4" x 1 1/4"
6	35924	1		1	1		Bearing Block 2 84989 Step Bolt 5/16" x 2 1/2" 2 80693 Plain Washer 5/16" 2 80674 Lockwasher 5/16" 2 84929 Nut 5/16"

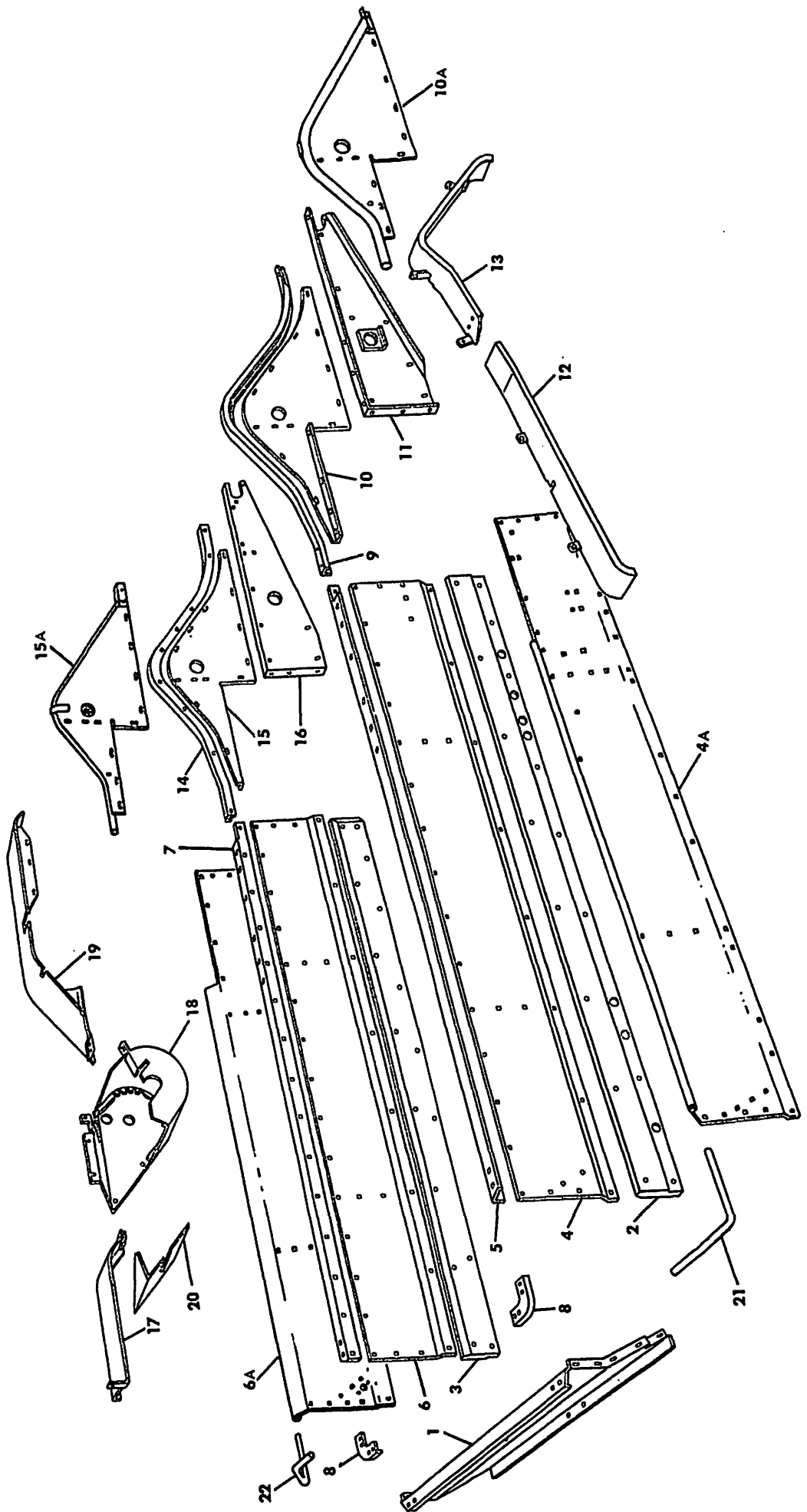
CONTINUED

MODELS 200, 202, 220, 221 & 222 MANURE SPREADERS

MAIN FRAME, BOARDS, APRON, AND DRIVE SHAFT (CONT'D.)

Ref. No.	Part No.	No. Used					Description
		200	202	220	221	222	
7	32628	2	2	2	2	2	Apron Idler Shaft Assy. 4 84306 Carr. Bolt 7/16" x 1 4 80691 Plain Washer 7/16" 4 80672 Lockwasher 7/16" 4 84931 Nut 7/16" 2 11438 Washer, Special 2 80739 Cotter Pin 3/16" x 1"
8	32488	2	2	2	2	2	Idler Sprocket, 5T
9	32474	2	2	2	2	2	J Bolt
10	84957	4	4	4	4	4	Hex Jam Nut 7/16"
11	45676	1	1	1	1	1	Apron Drive Shaft 2 80765 Woodruff Key 1 45319 Woodruff Key AR 00673 Space Washer 1/16" thick AR 00674 Space Washer 1/8" thick 2 87041 Cotter Pin 1/4" x 1 3/4"
12	56327	1	1	1	1	1	Apron Shaft Bearing, Left 1 80710 Grease Fitting
13	56328	1	1	1	1	1	Apron Shaft Bearing, Right 1 80719 Grease Fitting
14	44606	2	2	2	2	2	Sprocket 2 80391 Set Screw, Sq. Hd. 3/8" x 3/4" 2 84956 Jam Nut 3/8"
15	35865	1	1	1	1	1	Apron Chain Rivet Asy.
16	39762	13	13	13	13	13	Apron Slat
17	40728	13	13	13	13	13	Attachment Link, Right #67H 13 87632 Rivet, Truss Hd. 5/16" x 7/8"
18	40727	13	13	13	13	13	Attachment Link, Left #67H 13 87632 Rivet, Truss Hd. 5/16" x 7/8"
19	34880	182	182	182	182	182	Plain Link, #67H
20	48951		1			1	Tie Bar 7 84577 Carr. Bolt 5/16" x 1 1/4" 7 80693 Plainwasher 5/16" 7 84929 Nut 5/16"

**MODELS 200, 202, 220, 221 & 222 MANURE SPREADERS
END GATE, SIDE SHEETS, BEATER SHIELD AND SUPPORTS**



MODELS 200, 202, 220, 221 & 222 MANURE SPREADERS

END GATE, SIDE SHEETS, BEATER SHIELDS AND SUPPORTS

Ref. No.	Part No.	No. Used				Description
		200	202	220	221	
1	39769	1		1	1	End Gate
1A	49088		1			End Gate
						6 87510 Carr. Bolt 5/16" x 5/8"
						2 84826 Carr. Bolt 5/16" x 3/4"
						8 80681 Lockwasher 5/16"
						8 84943 Nut 5/16"
2	39752	1		1	1	Side Board, Left
						1 87513 Carr. Bolt 5/16" x 1 1/4"
						AR 84823 Carr. Bolt 3/8" x 1 1/2"
						1 84582 Carr. Bolt 3/8" x 1 3/4"
						3 87013 Carr. Bolt 7/16" x 1 1/4"
						1 87514 Carr. Bolt 7/16" x 1 1/2"
						1 80664 Plain Washer 5/16"
						4 80702 Plain Washer 3/8"
						AR 80680 Lockwasher 3/8"
						4 81547 Lockwasher 7/16"
						1 80681 Lockwasher 5/16"
						1 84943 Nut 5/16"
						AR 84944 Nut 3/8"
						4 84945 Nut 7/16"
3	39751	1		1	1	Side Board, Right
						1 87513 Carr. Bolt 5/16" x 1 1/4"
						9 84823 Carr. Bolt 3/8" x 1 1/2"
						4 87013 Carr. Bolt 7/16" x 1 1/4"
						1 87514 Carr. Bolt 7/16" x 1 1/2"
						1 80664 Plain Washer 5/16"
						4 80702 Plain Washer 3/8"
						9 80680 Lockwasher 3/8"
						AR 81547 Lockwasher 7/16"
						1 80681 Lockwasher 5/16"
						1 84943 Nut 5/16"
						9 84944 Nut 3/8"
						84945 Nut 7/16"
4	39763	1		1	1	Side Sheet, Left
4A	49087		1			Side Sheet, Left
						1 87510 Carr. Bolt 5/16" x 5/8"
						AR 84826 Carr. Bolt 5/16" x 3/4"
						AR 84867 Carr. Bolt 3/8" x 3/4"
						AR 87237 Carr. Bolt 3/8" x 1"
						2 87362 Plainwasher 5/16"
						AR 80681 Lockwasher 5/16"
						AR 80680 Lockwasher 3/8"
						AR 84943 Nut 5/16"
						AR 84944 Nut 3/8"
5	35933	1		1	1	Bed Rail, Left
						8 81642 Carr. Bolt 5/16" x 1/2"
						8 80674 Lockwasher 5/16"
						8 84929 Nut 5/16"
6	39764	1		1	1	Side Sheet, Right
6A	49086		1			Side Sheet, Right
						1 87510 Carr. Bolt 5/16" x 5/8"
						5 84826 Carr. Bolt 5/16" x 3/4"
						3 84867 Carr. Bolt 3/8" x 3/4"
						3 87237 Carr. Bolt 3/8" x 1"
						3 87362 Plainwasher 5/16"
						6 80681 Lockwasher 5/16"
						6 80680 Lockwasher 3/8"
						6 84943 Nut 5/16"
						6 84944 Nut 3/8"

CONTINUED

MODELS 200, 202, 220, 221 & 222 MANURE SPREADERS

END GATE, SIDE SHEETS, BEATER SHIELDS & SUPPORTS (CONT'D.)

Ref. No.	Part No.	No. Used				Description	
		200	202	220	221		222
7	35930	1		1	1	Bed Rail Right AR 81642 Carr. Bolt 5/16" x 1/2" AR 80674 Lockwasher 5/16" AR 84929 Nut 5/16"	
8	35961	2		2	2	Corner Rail 8 87510 Carr. Bolt 5/16" x 5/8" 8 80681 Lockwasher 5/16" 8 84943 Nut 5/16"	
9	39767	1		1	1	Upper Beater Shield Rail, Left 8 84628 Carr. Bolt 5/16" x 5/8" 1 81643 Carr. Bolt 5/16" x 3/4" 9 80674 Lockwasher 5/16" 9 84929 Nut 5/16"	
10	39765	1		1	1	Upper Beater Shield, Left	
10A	49429		1			1	Upper Beater Shield, Left 10 84826 Carr. Bolt 5/16" x 3/4" 3 87362 Plainwasher 5/16" 10 80674 Lockwasher 5/16" 10 84929 Nut 5/16"
11	35900	1	1	1	1	1	Beater Support Assy., Left 3 80328 Cap Screw, Hex Hd. 3/8" x 3/4" 2 84890 Carr. Bolt 7/16" x 1" 2 81541 Plain Washer 7/16" 3 80673 Lockwasher 3/8" 2 81547 Lockwasher 7/16" 3 84930 Nut 3/8" 2 84945 Nut 7/16"
12	39749	1	1				Left Front Shield Weld Assy. 2 87512 Carr. Bolt 5/16" x 1" 2 84467 Mach. Screw, Truss Hd. 1/4" x 1/2" 2 80681 Lockwasher 5/16" 2 80682 Lockwasher 1/4" 2 84943 Nut 5/16" 2 84942 Nut 1/4"
13	39750	1	1	1			Left Rear Shield Assy. 2 81643 Carr. Bolt 5/16" x 3/4" 1 80330 Cap Screw, Hex Hd. 5/16" x 3/4" 3 80674 Lockwasher 5/16" 3 84929 Nut 5/16"
13A	45681			1	1		Left Rear Shield Assy. 1 84826 Carr. Bolt 5/16" x 3/4" 2 80256 Truss Hd. Mach. Screw 1/4" x 1/2" 1 87149 Cap Screw, Hex Hd. 5/16" x 3/4" 2 80681 Lockwasher 5/16" 2 80675 Lockwasher 1/4" 2 84943 Nut 5/16" 2 84928 Nut 1/4"
14	39768	1		1	1		Upper Beater Shield Rail, Right 1 81643 Carr. Bolt 5/16" x 3/4" 7 84628 Carr. Bolt 5/16" x 5/8" 1 87494 Carr. Bolt 3/8" x 1 1/4" (on 200) 1 80680 Lockwasher 3/8" (on 200) 8 80674 Lockwasher 5/16" 1 84944 Nut 3/8" (on 200) 8 84929 Nut 5/16"
15	39766	1		1	1		Upper Beater Shield, Right

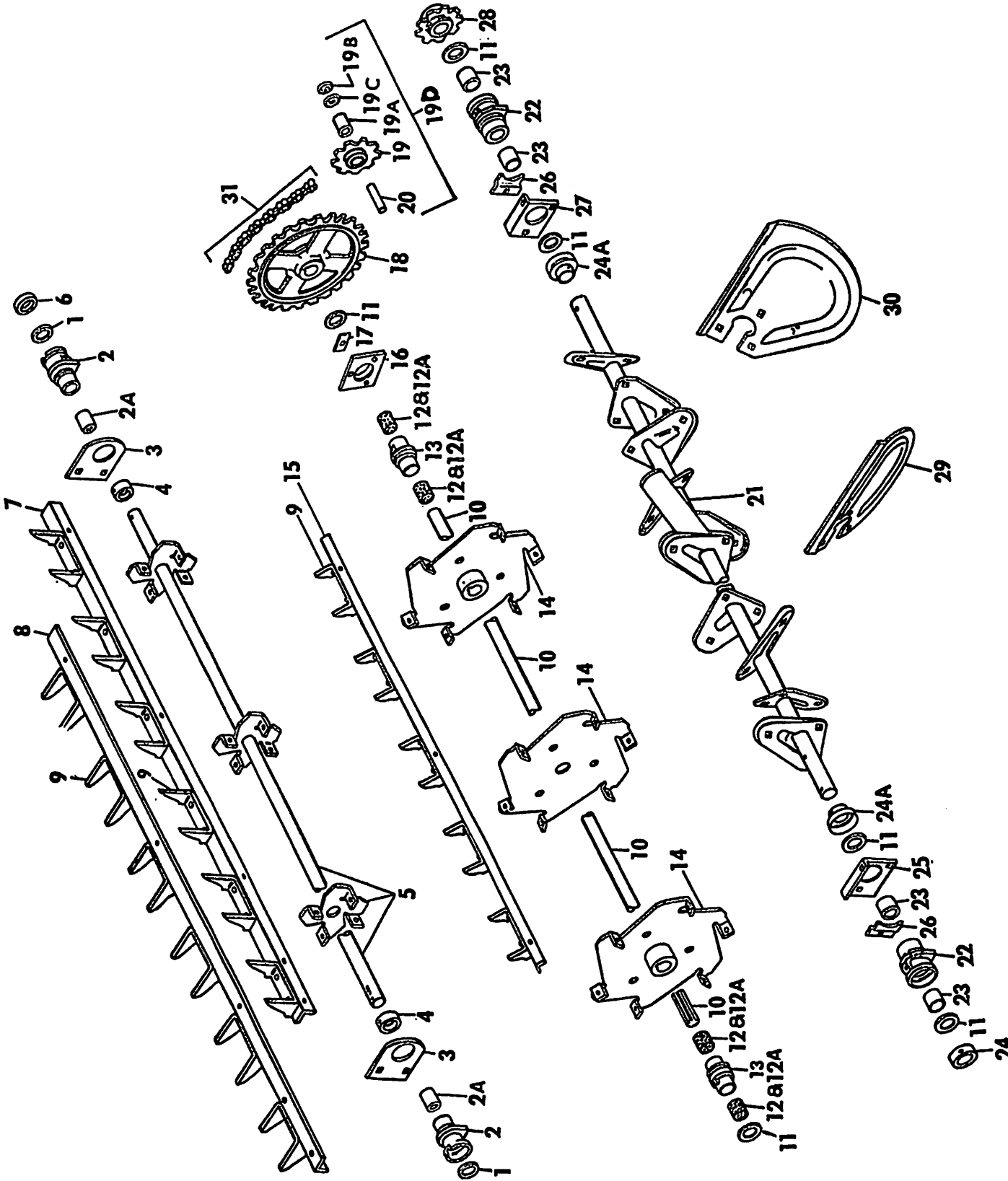
CONTINUED

MODELS 200, 202, 220, 221 & 222 MANURE SPREADERS

END GATE, SIDE SHEETS, BEATER SHIELDS & SUPPORTS (CONT'D.)

Ref. No.	Part No.	No. Used					Description
		200	202	220	221	222	
15A	49428		1			1	Upper Beater Shield, Right 9 84628 Carr. Bolt 5/16" x 5/8" 3 87362 Plainwasher 5/16" 9 80674 Lockwasher 5/16" 9 84929 Nut 5/16"
16	35902	1	1	1	1	1	Beater Support Assy., Right 3 80328 Cap Screw, Hex Hd. 3/8" x 3/4" 2 84890 Carr. Bolt 7/16" x 1" 2 81541 Plain Washer 7/16" 3 80673 Lockwasher 3/8" 2 81547 Lockwasher 7/16" 3 84930 Nut 3/8" 2 84945 Nut 7/16"
17	39779	1	1				Shield Weld Assy., Right Front 2 84467 Mach. Screw, Truss Hd. 1/4" x 1/2" 1 87149 Cap Screw, Hex Hd. 5/16" x 3/4" 2 80682 Lockwasher 1/4" 1 80681 Lockwasher 5/16" 2 84942 Nut 1/4" 1 84943 Nut 5/16"
18	39770	1	1	1	1	1	Guard Weld Assy. 3 84826 Carr. Bolt 5/16" x 3/4" 1 87149 Cap Screw, Hex Hd. 5/16" x 3/4" 1 80664 Plain Washer 5/16" 2 80681 Lockwasher 5/16" 2 84943 Nut 5/16"
19	39815	1		1	1		Shield Weld Assy., Right Rear
19A	49822		1			1	Shield Weld Assy., Right Rear 1 87510 Carr. Bolt 5/16" x 5/8" 2 84826 Carr. Bolt 5/16" x 3/4" 2 84467 Truss Hd. Mach. Screw 1/4" x 1/2" 3 80681 Lockwasher 5/16" 2 80682 Lockwasher 1/4" 3 84943 Nut 5/16" 2 84942 Nut 1/4"
20	39792			1	1	1	Guard Front 4 84467 Mach. Screw, Truss Hd. 1/4" x 1/2" 4 80682 Lockwasher 1/4" 4 84942 Nut 1/4"
21	40750		1			1	Corner Rail, Left 2 87546 Carr. Bolt 5/16" x 1 3/4" 2 80681 Lockwasher 5/16" 2 84943 Nut 5/16"
22	40749		1			1	Corner Rail, Right 2 87546 Carr. Bolt 5/16" x 1 3/4" 2 80681 Lockwasher 5/16" 2 84943 Nut 5/16"

**MODELS 200, 202, 220, 221 & 222 MANURE SPREADERS
UPPER AND MAIN BEATERS AND WIDESPREAD GROUP**



MODELS 200, 202, 220, 221 & 222 MANURE SPREADERS

UPPER AND MAIN BEATERS AND WIDESPREAD GROUP

Ref. No.	Part No.	No. Used					Description
		200	202	220	221	222	
1	25069	2	2	2	2	2	Washer
2	47062	2	2	2	2	2	Upper Beater Bearing w/Bushing
						1	80721 Grease Fitting 45°
					2	1	80714 Grease Fitting (for bearing w/bushing)
		2	1	2			80710 Grease Fitting (for bearing without bushing)
			1				80717 Grease Fitting 45°
2A	46999	2	2	2	2	2	Bushing
3	32437	2	2	2	2	2	Upper Beater Bearing Holder
						4	80218 Carr. Bolt 3/8" x 1"
						4	80673 Lockwasher 3/8"
						4	84930 Nut 3/8"
4	35976	2	2	2	2	2	Set Collar
						4	80425 Set Screw, Hollow Hd. 3/8" x 3/8"
5	35863	1	1	1	1	1	Upper Beater Shaft Assy. (for 200 Drive Sprockets, see Pgs. 19 & 20)
6	35977	1	1	1	1	1	Collar
						1	87516 Roll Pin 1/4" x 1 3/8"
7	36409	4	4	4	4	4	Main Beater Bar #1 Rivet Assy. (left hand tooth 3-5/16 from end)
						12	87985 Cap Screw, Hex Hd. 3/8" x 1" (N.F.)
						12	80680 Lockwasher 3/8"
						12	84950 Nut 3/8" (N.F.)
8	36410	4	4	4	4	4	Main Beater Bar #2 Rivet Assy. (left hand tooth 7/16" from end)
						12	87985 Cap Screw, Hex Hd. 3/8" x 1" (N.F.)
						12	80680 Lockwasher 3/8"
						12	84950 Nut 3/8" (N.F.)
9	32662	50	50	50	50	50	Beater Tooth
						100	84378 Rivet, Rnd. Hd. 5/16" x 3/4"
10	35973	1	1	1			Main Beater Shaft
10A	45677				1	1	Main Beater Shaft
11	32455	AR	AR	AR	AR	AR	Washer
12	29974	4		2	2		Bushing 1 3/8" O.D.
12A	46988	4	4	2	2	2	Bushing 1 1/2" O.D.
13	47057	2	2	1	1	1	Main Beater Bearing w/bushings
							(Refer to pages 32 and 33 for 220 R.H. Drive)
						2	80710 Grease Fitting 1/8"
						1	80718 Grease Fitting L. 1/4"
						1	80714 Grease Fitting R. 1/4" (on 200)
14	34286	3	3	3	3	3	Main Beater Head Assy.
						2	87053 Woodruff Key
						3	80388 Set Screw, Sq. Hd. 3/8" x 7/8"
						3	84956 Hex Jam Nut 3/8"
15	36411	2	2	2	2	2	Main Beater #3 Rivet Assy. (left hand tooth 2 7/8" from end)
						6	87985 Cap Screw, Hex Hd. 3/8" x 1" (N.F.)
						6	80680 Lockwasher 3/8"
						6	84950 Nut 3/8" (N.F.)
16	40313	1	1				Bearing Flange
						2	84867 Carr. Bolt 3/8" x 3/4"
						2	80680 Lockwasher 3/8"
						2	84944 Nut 3/8"
17	40312	1	1				Stop
						1	80161 Carr. Bolt 3/8" x 1 1/4"
						1	80680 Lockwasher 3/8"
						1	84944 Nut 3/8"
18	39761	1	1				Sprocket 26T (For Models 220 & 221 Main Apron Sprocket
							See page 32 Ref. No. 15)
						1	84848 Woodruff Key
						1	80420 Set Screw, Hollow Hd. 1/2" x 1"
						1	84970 Nut 1/2"
19	48964	1	1	1	1	1	Idler Sprocket w/Bushing

CONTINUED

MODELS 200, 202, 220, 221 & 222 MANURE SPREADERS

UPPER AND MAIN BEATERS AND WIDESPREAD GROUP

Ref. No.	Part No.	No. Used					Description
		200	202	220	221	222	
19A	48965	1	1	1	1	1	Nylon Bushing
19B	48917	3	3	3	3	3	Washer .135 Thick
19C	34821	4	4	4	4	4	Washer .060 Thick
19D	49074	1	1	1	1	1	Idler Ass'y. Complete w/bolt
20	32318	1	1	1	1	1	Bushing 1 87870 Cap Screw, Hex Hd. 7/16" x 3/4" 1 80672 Lockwasher 7/16" 1 84931 Nut 7/16"
21	59458	1	1	1	1	1	Widespread Shaft Assy. 1 80735 Cotter Pin 1/4" x 1 1/2"
22	32646	2	2	2	2		Widespread Bearing w/bushing 2 80720 Grease Fitting
22A	47038					2	Widespread Bearing w/bushing
23	29974	4	4	4	4		Bushing
23A	46988					4	Bushing
24	59615		*1			*1	Collar 1 87516 Roll Pin 1/4" x 1 5/8"
24A	47019	2	**2	2	2	**2	Collar 2 80514 Rivet, Rnd. Hd. 1/4" x 2"
25	32352	1	1	1	1	1	Bearing Support, Left 2 81643 Carr. Bolt 5/16" x 3/4" 2 80674 Lockwasher 5/16" 2 84929 Nut 5/16"
26	32451	2	2	2	2	2	Bearing Clip 2 81643 Carr. Bolt 5/16" x 3/4" 2 80674 Lockwasher 5/16" 2 84929 Nut 5/16"
27	32351	1	1	1	1	1	Bearing Support, Right 2 81643 Carr. Bolt 5/16" x 3/4" 2 80674 Lockwasher 5/16" 2 84929 Nut 5/16"
28	39760	1	1	1	1	1	Sprocket 9T 1 25877 Drilled Rivet 1 80742 Cotter Pin 1/8" x 3/4"
29	49083	6	6	6	6	6	Widespread Paddle, Left 18 84867 Carr. Bolt 3/8" x 3/4" 18 80680 Lockwasher 3/8" 18 84944 Nut 3/8"
30	49082	6	6	6	6	6	Widespread Paddle, Right 18 84867 Carr. Bolt 3/8" x 3/4" 18 80680 Lockwasher 3/8" 18 84944 Nut 3/8"
31	39888	1	1				Widespread Drive Chain
31A	46483			1	1	1	Widespread Drive Chain
31B	25193	AR	AR	AR	AR	AR	Coupler Link — Cotter Pin Type
31C	25810			AR	AR	AR	Roller Link

*Used on and Above Model 202 Serial No. 6211.

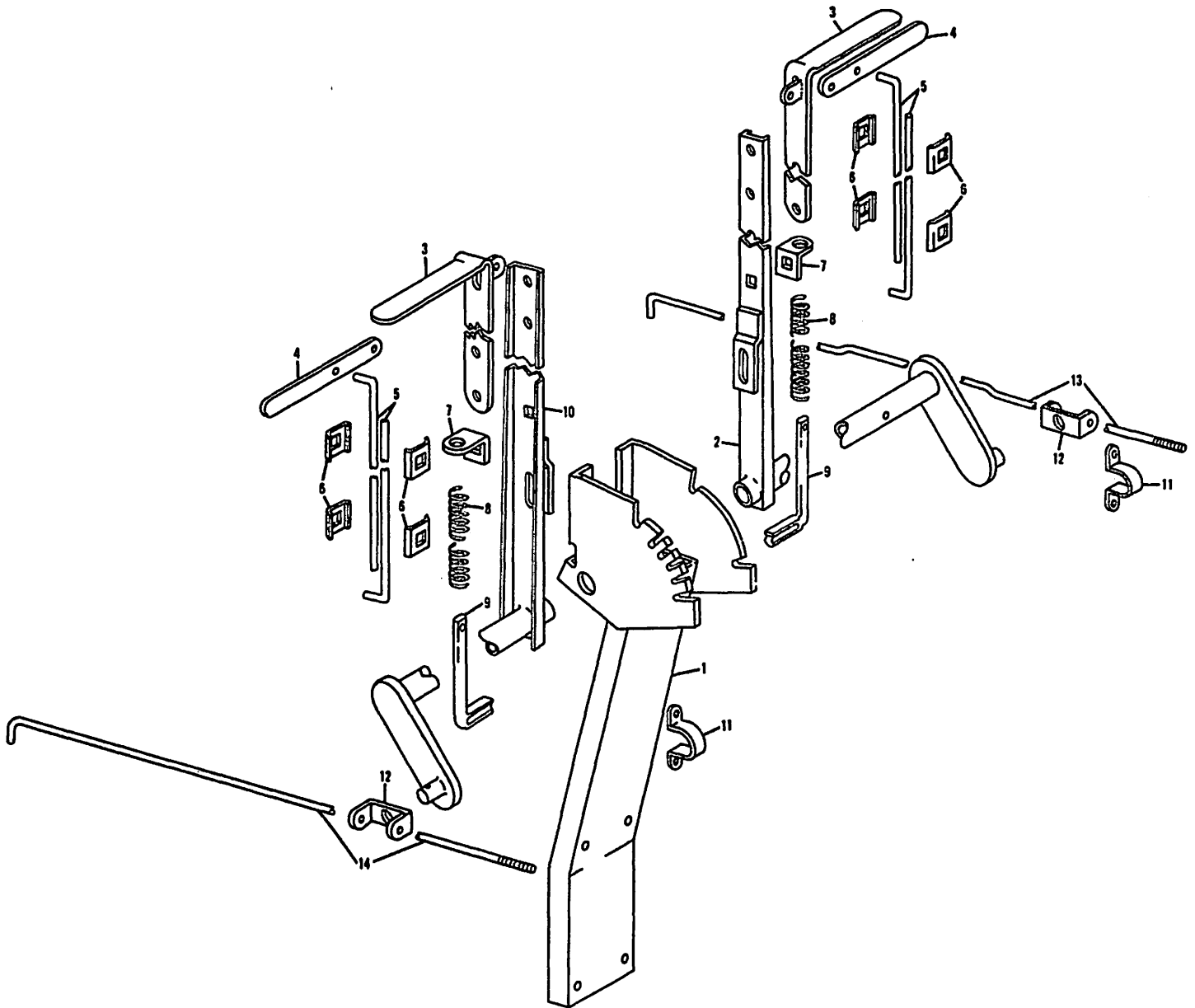
*Used on and Above Model 222 Serial No. 7012.

**Used on and Below Model 202 Serial No. 6210.

**Used on and Below Model 222 Serial No. 7011.

200 & 202 MANURE SPREADER

FEED AND DRIVE CONTROLS



Ref. No.	Part No.	No. Used		Description
		200	202	
1	35925	1	1	Quadrant Weld Assy. 6 87510 Carr. Bolt 5/16" x 5/8" 2 87149 Cap Screw, Hex Hd. 5/16" x 3/4" 2 87016 Plain Washer 5/16" 8 80681 Lockwasher 5/16" 8 84943 Nut 5/16"
2	35895	1	1	Drive Lever Assy. 1 80755 Cotter Pin 1/8" x 1" 1 87363 Plain Washer 7/16"
3	36143	2	2	Feed Lever Extension Assy. 4 80218 Carr. Bolt 3/8" x 1" 4 80673 Lockwasher 3/8" 4 84930 Hex Nut 3/8"
4	32443	2	2	Quadrant Lock Lift Lever 2 80373 Mach. Screw, Truss Hd. 1/4" x 5/8" 2 81561 Locknut 1/4"

CONTINUED

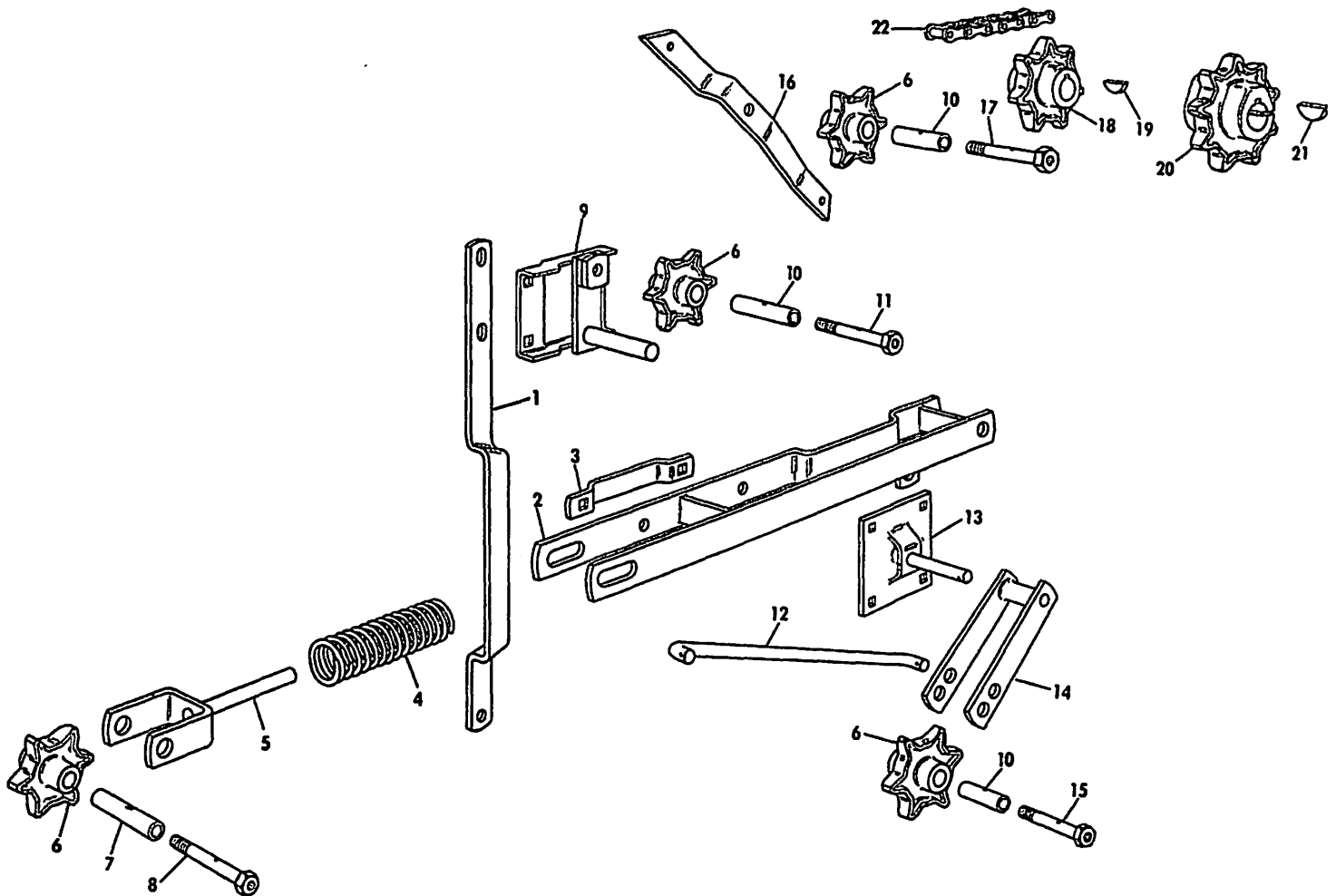
200 & 202 MANURE SPREADER

FEED AND LEVER CONTROLS (CONT'D.)

Ref. No.	Part No.	No. Used		Description
		200	202	
5	39886	4	4	Quadrant Lock Wire
6	26335	8	8	Clamp
				4 80218 Carr. Bolt 3/8" x 1"
				4 80673 Lockwasher 3/8"
				4 84930 Nut 3/8"
7	34806	2	2	Guide
				2 80228 Carr. Bolt 3/8" x 3/4"
				2 80673 Lockwasher 3/8"
				2 84930 Nut 3/8"
8	32304	2	2	Spring
9	32471	2	2	Quadrant Lock Rod
				4 80692 Plain Washer 3/8"
				4 80742 Cotter Pin 1/8" x 3/4"
10	35892	1	1	Feed Lever Assy.
				1 87363 Plain Washer 7/16"
				1 80755 Cotter Pin 1/8" x 1"
11	35958	2	2	Lever Tube Bearing
				4 87510 Carr. Bolt 5/16 x 5/8"
				4 80681 Lockwasher 5/16"
				4 84943 Nut 5/16"
12	32445	2	2	Feed Arm Clip
13	35974	1	1	Drive Control Rod
				1 87397 Cotter Pin 3/16" x 1"
				2 84958 Hex Jam Nut 1/2"
14	35972	1	1	Feed Control Rod
				1 87397 Cotter Pin 3/16" x 1"
				2 84957 Hex Jam Nut 7/16"

200 & 202 MANURE SPREADER

LEFT SIDE LIFTERS, SPROCKETS, AND CHAIN



Ref. No.	Part No.	No. Used		Description
		200	202	
1	35969	1	1	Lifter Arm Guide 1 87514 Carr. Bolt 7/16" x 1 1/2" 1 87512 Carr. Bolt 5/16" x 1" 1 80664 Plain Washer 5/16" 1 81547 Lockwasher 7/16" 1 80681 Lockwasher 5/16" 1 84945 Nut 7/16" 1 84943 Nut 5/16"
2	35874	1	1	Lifter Weld Assy.
3	35956	1	1	Guide Clip 2 84826 Carr. Bolt 5/16" x 3/4" 2 80681 Lockwasher 5/16" 2 84943 Nut 5/16"
4	35994	1	1	Spring
5	35840	1	1	Idler Yoke Weld Assy.
6	36518	4	4	Idler Sprocket
7	35999	1	1	Spacer, Split
8	36521	1	1	Cap Screw, Special 1 80714 Grease Fitting 2 80691 Plain Washer 7/16" 1 80790 Lock Nut 7/16"

CONTINUED

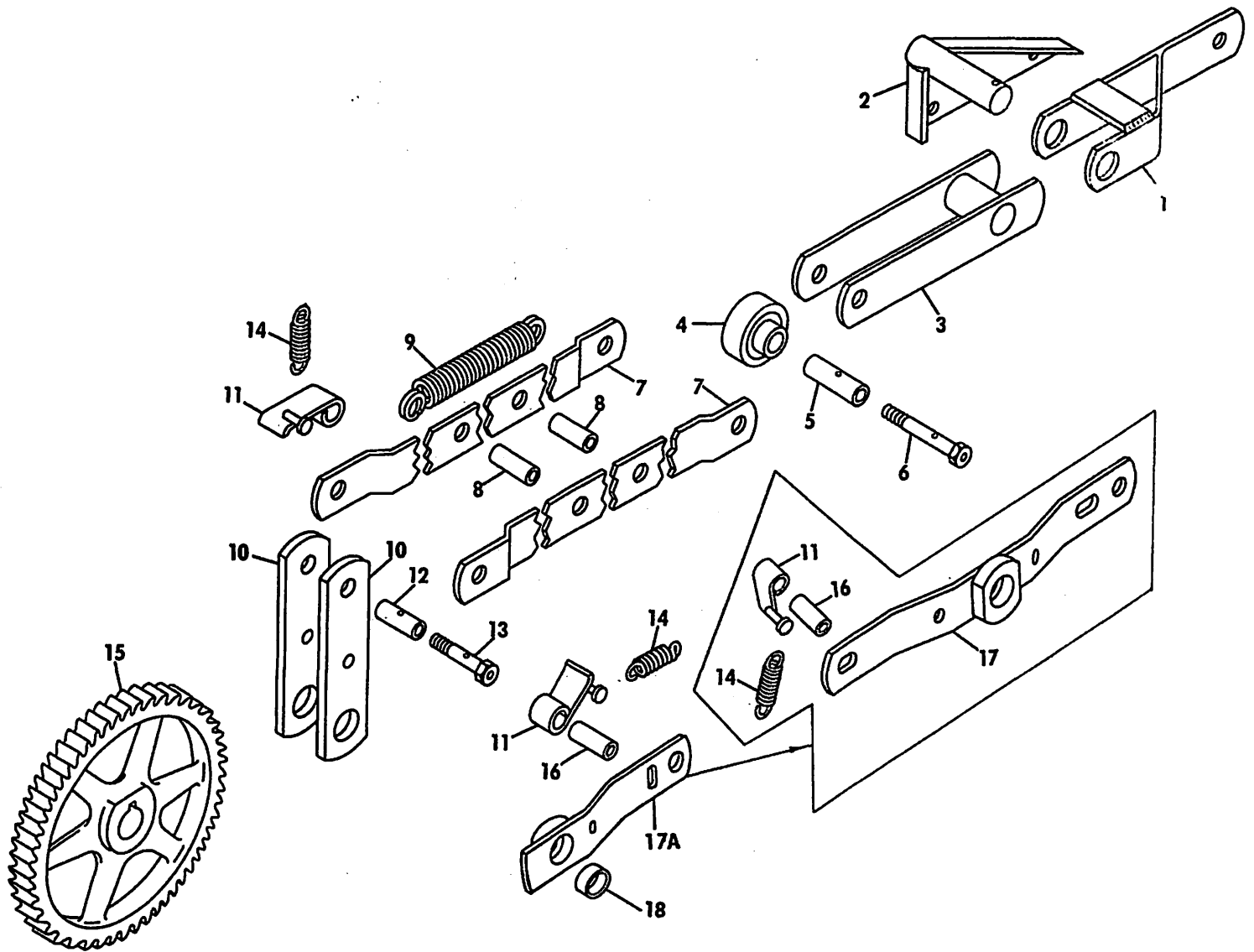
200 & 202 MANURE SPREADER

LEFT SIDE LIFTERS, SPROCKETS AND CHAIN (CONT'D.)

Ref. No.	Part No.	No. Used		Description
		200	202	
9	35882	1	1	Pivot Bracket Weld Assy. 2 87510 Carr. Bolt 5/16" x 5/8" 2 87237 Carr. Bolt 3/8" x 1" 2 80681 Lockwasher 5/16" 2 80680 Lockwasher 3/8" 2 84943 Nut 5/16" 2 84944 Nut 3/8" 1 87398 Cotter Pin 3/16" x 1 1/4"
10	36523	3	3	Spacer, Split
11	36520	1	1	Cap Screw, Special 1 80714 Grease Fitting 1 80691 Plain Washer 7/16" 1 80672 Lockwasher 7/16" 1 84931 Nut 7/16"
12	35975	1	1	Connecting Rod 2 87397 Cotter Pin 3/16" x 1"
13	35888	1	1	Guide Pin Weld Assy. 1 87363 Plain Washer 7/16" 1 80755 Cotter Pin 1/8" x 1" 4 87510 Carr. Bolt 5/16" x 5/8" 4 80681 Lockwasher 5/16" 4 84943 Nut 5/16"
14	35886	1	1	Guide Arm Weld Assy.
15	36519	1	1	Cap Screw, Special 1 80672 Lockwasher 7/16" 1 84931 Nut 7/16" 1 80718 Grease Fitting
16	35970	1	1	Idler Bracket 1 87494 Carr. Bolt 3/8" x 1 1/4" 1 87512 Carr. Bolt 5/16" x 1" 1 80680 Lockwasher 3/8" 1 80681 Lockwasher 5/16" 1 84944 Nut 3/8" 1 84943 Nut 5/16"
17	36519	1	1	Cap Screw, Special 1 80691 Plain Washer 7/16" 1 80672 Lockwasher 7/16" 1 84931 Nut 7/16" 1 80714 Grease Fitting
18	35985	1	1	Sprocket 7T 1 87516 Roll Pin 1/4" x 1 5/8"
19	84322	1	1	Woodruff Key
20	35986	1	1	Sprocket 9T 1 80420 Set Screw, Hollow Hd. 1/2" x 1" 1 84958 Hex Jam Nut 1/2"
21	84848	1	1	Woodruff Key
22	36105	1	1	Drive Chain, Implement Roller Chain
22A	40241	AR	AR	Coupler Link, Cotter Pin Type
22C	43278	94	95	Roller Link

200 & 202 MANURE SPREADER

RIGHT SIDE CONTROL ARMS, PAWLS, RATCHET WHEEL



Ref. No.	Part No.	No. Used		Description
		200	202	
1	35843	1	1	Control Arm Weld Assy.
2	39758	1	1	Pivot Pin Weld Assy.
				4 25523 Washer
				1 87402 Cotter Pin 1/4" x 1 1/4"
				2 87013 Carr. Bolt 7/16" x 1 1/4"
				2 81547 Lockwasher 7/16"
				2 84945 Nut 7/16"
3	35847	1	1	Cam Follower Arm Weld Assy.
4	35987	1	1	Cam Roller
5	35997	1	1	Spacer
6	35983	1	1	Bolt, Special
				1 80718 Grease Fitting
				1 80671 Lockwasher 1/2"
				1 84932 Nut 1/2"
7	35968	2	2	Push Strap

CONTINUED

200 & 202 MANURE SPREADER

RIGHT SIDE CONTROL ARMS, PAWLS, RATCHET WHEELS (CONT'D.)

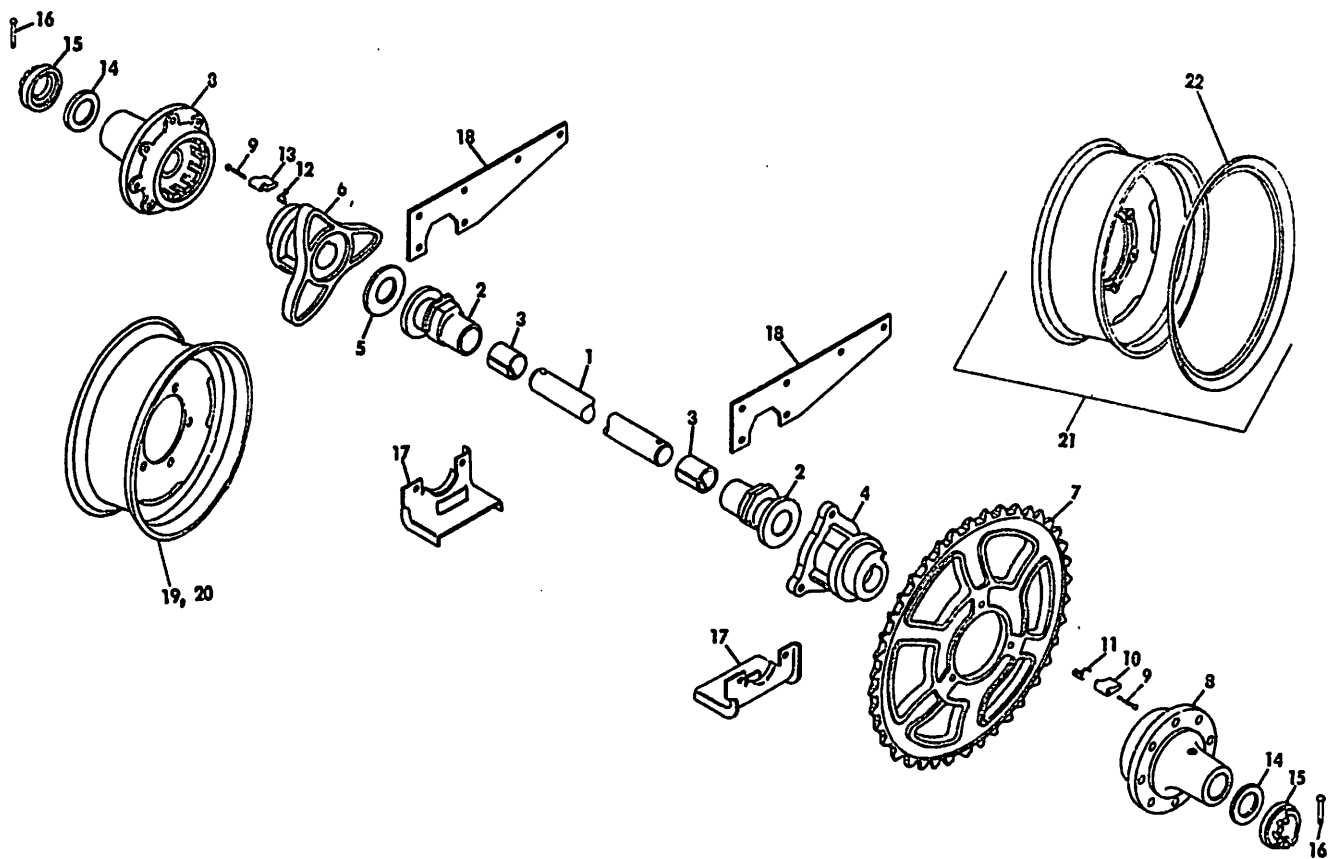
Ref. No.	Part No.	No. Used		Description
		200	202	
8	35993	2	2	Spacer 1 87073 Cap Screw, Hex Hd. 7/16" x 2 3/4" 1 87074 Cap Screw, Hex Hd. 7/16" x 3 1/2" 1 80691 Plain Washer 7/16" 2 80672 Lockwasher 7/16" 2 84931 Nut 7/16" 1 80790 Lock Nut 7/16"
9	35992	1	1	Extension Spring 1 87515 Carr. Bolt 7/16" x 1 3/4" 1 81541 Plain Washer 7/16" 1 81547 Lockwasher 7/16" 1 84945 Nut 7/16" 1 87517 Lock Nut 7/16"
10	35967	2	2	Ratchet Pawl Arm 1 87401 Cotter Pin 1/4" x 1"
11	39784 64818	3	AR	Pawl Weld Assy. (2 Used Above 202 Serial No. 6211) (3 Used Below 202 Serial No. 6210)
12	35998	1	1	Spacer
13	35982	1	1	Bolt, Special 1 80714 Grease Fitting 1 80679 Lockwasher 1/2" 1 84946 Hex Nut 1/2"
14	32306	3	3 AR	Spring (2 Used Above 202 Serial No. 6211. (3 Used Below 202 Serial No. 6210)
15	39845	1	1	Ratchet Wheel 1 45319 Woodruff Key
16	32319	2	AR	Bushing (1 Used Above 202 Serial No. 6211) (2 Used Below 202 Serial No. 6210.) AR 87186 Cap Screw, Hex Hd. 1/2" x 2 3/4" AR 87364 Plain Washer 1/2" AR 80679 Lockwasher 1/2" AR 84926 Nut 1/2"
17	49090	1	**1	Pawl Support Assy., Right, w/bushing 1 87111 Cap Screw, Hex Hd. 1/2" x 1 1/2" 1 80679 Lockwasher 1/2" 1 84946 Nut 1/2" 2 87401 Cotter Pin 1/4" x 1"
17A	59947		*1	Pawl Support Assy., Right, w/bushing — 49076 1 80453 Cotter Pin 1/4" x 1" 1 80369 Cap Screw 1/2" x 2 3/4" 1 84915 Plainwasher 1/2" 1 80671 Lockwasher 1/2" 1 84932 Nut 1/2"
18	49076	1	1	Nylon Bushing

* Used on and Above Serial No. 6210.

** Used on and Below Serial No. 6211.

200 & 202 MANURE SPREADER

AXLE GROUP



Ref. No.	Part No.	No. Used		Description
		200	202	
1	35941	1	1	Axle
				2 84369 Key 3/8" x 2 3/4"
2	48730	2	2	Axle Bearing w/Bushing
				2 80720 Grease Fitting
3	48731	4	4	Nylon Axle Bearing Bushing
3A	35944	4	4	Axle Bearing Bushing, Steel-Backed
4	35945	1	1	Sprocket Hub
				1 80383 Set Screw, Sq. Hd. 1/2" x 1 1/2"
				1 84958 Hex Jam Nut 1/2"
5	35947	1	2	Washer
6	35946	1	1	Drive Cam
				1 80383 Set Screw, Sq. Hd. 1/2" x 1 1/2"
				1 84958 Hex Jam Nut 1/2"
7	35984	1	1	Sprocket, 41T
				3 80364 Cap Screw, Hex Hd. 1/2" x 2 1/4"
				12 36253 Washer
				3 80671 Lockwasher 1/2"
				3 84932 Nut 1/2"
8	35937	2	2	Wheel Hub
				2 80720 Grease Fitting
				16 13542 Hub Bolt
9	28049	2	2	Drilled Rivet
				2 80742 Cotter Pin 1/8" x 3/4"

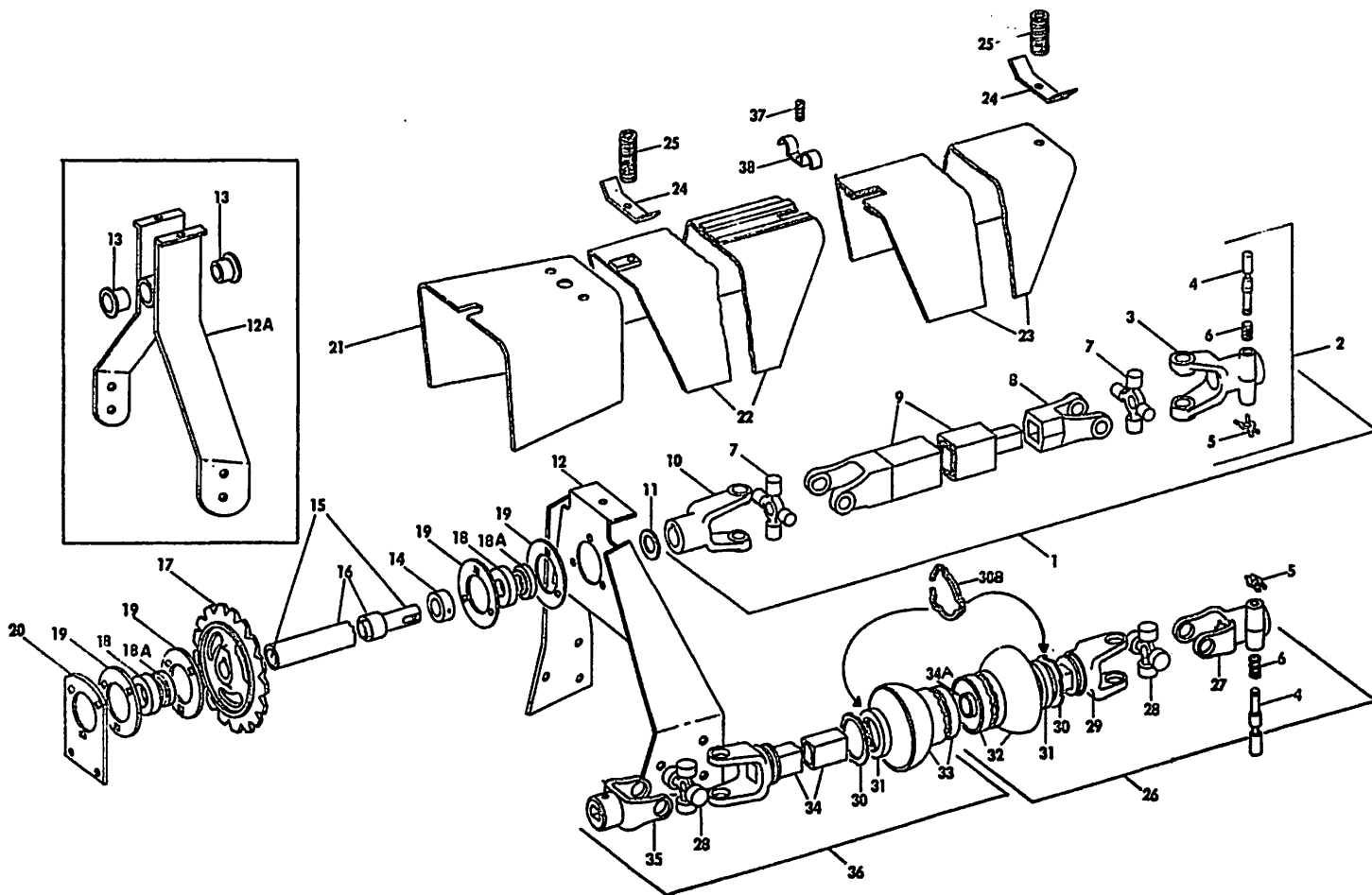
CONTINUED

200 & 202 MANURE SPREADER

AXLE GROUP (CONT'D.)

Ref. No.	Part No.	No. Used		Description
		200	202	
10	35939	1	1	Dog, Left
11	35948	1	1	Dog Spring, Left
12	35949	1	1	Dog Spring, Right
13	35938	1	1	Dog, Right
14	35951	AR	AR	Washer
15	35950	2	2	Adjusting Collar
16	27914	2	2	Drilled Rivet
17	35868	2	2	2 80739 Cotter Pin 3/16" x 1"
				Bearing Retainer Assy.
				4 87173 Cap Screw, Hex Hd. 7/16" x 1"
				4 81547 Lockwasher 7/16"
18	35910	2	2	4 84945 Nut 7/16"
				Bearing Bracket
				3 84890 Carr. Bolt 7/16" x 1"
				2 87514 Carr. Bolt 7/16" x 1½"
21	33017	2	2	5 81547 Lockwasher 7/16"
				5 84945 Nut 7/16"
WHEEL OPTIONS				
19	13537	2	2	Wheel 24 x 5.50 Drop Center "R"
				2 00820 Tube 7.50 x 24
				2 36106 Tire 7.50 x 24
20	42769	2	2	Wheel Assy. 20 x 7 Wide base Disc Wheel for truck tires
21	33017	2	2	Wheel assembly with demountable side ring for truck tires.
22	37314	2	2	Side Ring (Used with Detachable Ring Wheel)
				2 36108 Tire 7.50 x 20
				2 36109 Tube 7.50 x 20

MODEL 220, 221 & 222 MANURE SPREADER P.T.O. DRIVE ASSEMBLY AND GUARDS



Ref. No.	Part No.	220	No. Used		Description
			221	222	
1	46330	1	**1		P.T.O. Assy. Complete
2	26982	1	**1		Quick Detachable Yoke Assy.
3	26979	1	**1		Quick Detachable Yoke
4	40314	1	1	1	Quick Detachable Yoke Pin
5	40305	1	1	1	"X" Washer
6	26981	1	1	1	Spring
7	29538	2	**2		Spider & Bearing Assy.
					2 80711 Grease Fitting
7A	43454	2	**2		Spider & Bearing Service Kit
8	32256	1	**1		Yoke
					1 80536 Rivet, Rnd. Hd. 5/16" x 2"
9	46331	1	**1		P.T.O. Tube Assy.
					1 87408 Grease Fitting
10	32380	1	**1		Yoke
					1 80768 Woodruff Key
					1 25886 Drilled Rivet
					1 80746 Cotter Pin 1/8" x 1/2"
11	26202	1	**1		Washer
12	47116		*1	1	Bearing Mount Assy.
					1 80718 Grease Fitting
					6 80374 Cap Screw, Hex Hd. 1/2" x 1"
					6 80679 Lockwasher 1/2"
					6 84946 Nut 1/2"
12A	40420	1	**1		Bearing & Shield Support Weld Assy. w/bushing
13	40370	2	**2		Flange Bearing
14	35977	1			Collar (used on and below Serial No. 2231)
					1 87516 Roll Pin 1/4" x 1 3/8"
15	44036	1	**1		Drive Shaft w/collar
15A	47091		*1	1	Drive Shaft
16	40371	1	**1		Drive Shaft Shield
16A	47092		*1	1	Drive Shaft Shield

CONTINUED

**MODEL 220, 221 & 222 MANURE SPREADER
P.T.O. DRIVE ASSEMBLY AND GUARDS (CONT'D.)**

Ref. No.	Part No.	No. Used			Description
		220	221	222	
17	40372	1	1	1	Sprocket 17T 1 80768 Woodruff Key 1 80435 Set Screw, Sq. Hd. 3/8" x 3/4" 1 84969 Hex Jam Nut 3/8"
18	38261	1	•2	2	Flange Bearing Assy.
18A	38260	1	•2	2	Collar
19	36853	2	•4	4	Flangette 5 84826 Carr. Bolt 5/16" x 3/4" 1 87512 Carr. Bolt 5/16" x 1" 6 80681 Lockwasher 5/16" 6 84943 Nut 5/16"
20	47127	1	1	1	Flange Bearing Support 2 87237 Carriage Bolt 3/8" x 1" 2 80680 Lockwasher 3/8" 2 84944 Nut 3/8"
21	32568	1	**1		P.T.O. Guard Assy.
21A	41400		*1	1	P.T.O. Guard Assy. 2 80375 Cap Screw, Hex Hd. 3/8" x 3/4" 2 80680 Lockwasher 3/8" 2 84944 Nut 3/8"
22	32562	1	**1		Telescoping Guard Assy., Inner
23	32566	1	**1		Telescoping Guard Assy., Outer
24	25824	2	**2		P.T.O. Guard Clip
25	25823	2	**2		Spring 2 87167 Cap Screw, Hex Hd. 3/8" x 3" 2 80702 Plain Washer 3/8" 2 84944 Nut 3/8"
26	58047		*****1		P.T.O. Front Assy.
26A	47000		*1 *****1		P.T.O. Front Assy.
27	45557		*1	1	Quick Detachable Yoke
28	39360		*2	2	Spider and Bearing Assembly 2 80711 Grease Fitting
28A	46452		*2	2	Spider and Bearing Service Kit
29	58046		*1	1	Yoke and Shaft Weld Assembly (When Replacing Earlier Type Order 1-56801 with 1-58046)
30	56801		*****2		Thrust Washer
30A	41503		*2 *****2		Thrust Washer
30B	56760		*****2		Snap Ring
31	47941		*2 *****2		Nylon Bushing
32	58044		*****1		Bell and Outer Shield Assy.
32A	47004		*1 *****1		Bell and Outer Shield Assy.
33	58043		*****1		Bell and Inner Shield Assy.
33A	47003		*1 *****1		Bell and Inner Shield Assy.
34	58045		*1	1	Yoke and Tube Weld Assy. (When Replacing Earlier Type Order 1-56801 with 1-58045)
34A	56800		*****1		Shield Support Bearing
35	45866		*1	1	Yoke 1 80768 Woodruff Key 1 87155 Cap Screw, Hex Hd. 5/16" x 2 1/2" 1 80681 Lockwasher 5/16" 1 84943 Nut 5/16"
36	58048		*****1		P.T.O. Rear Assy.
36A	47001		*1 *****1		P.T.O. Rear Assy.
37	***37193			1	Spring 1 87112 Cap Screw, Hex Hd. 3/8" x 2 1/4" 1 87016 Plainwasher 3/8" 1 80680 Lockwasher 3/8" 1 84040 Nut 3/8"
38	***37192			1	Clip

*Used on and above Serial No. 3478.
**Used on and below Serial No. 3477.

•1-Bearing, 1-collar, and 2-flangettes are used on and below Serial No. 3477. 2-Bearings, 2-collars, and 4-flangettes are used on and above Serial No. 3478.

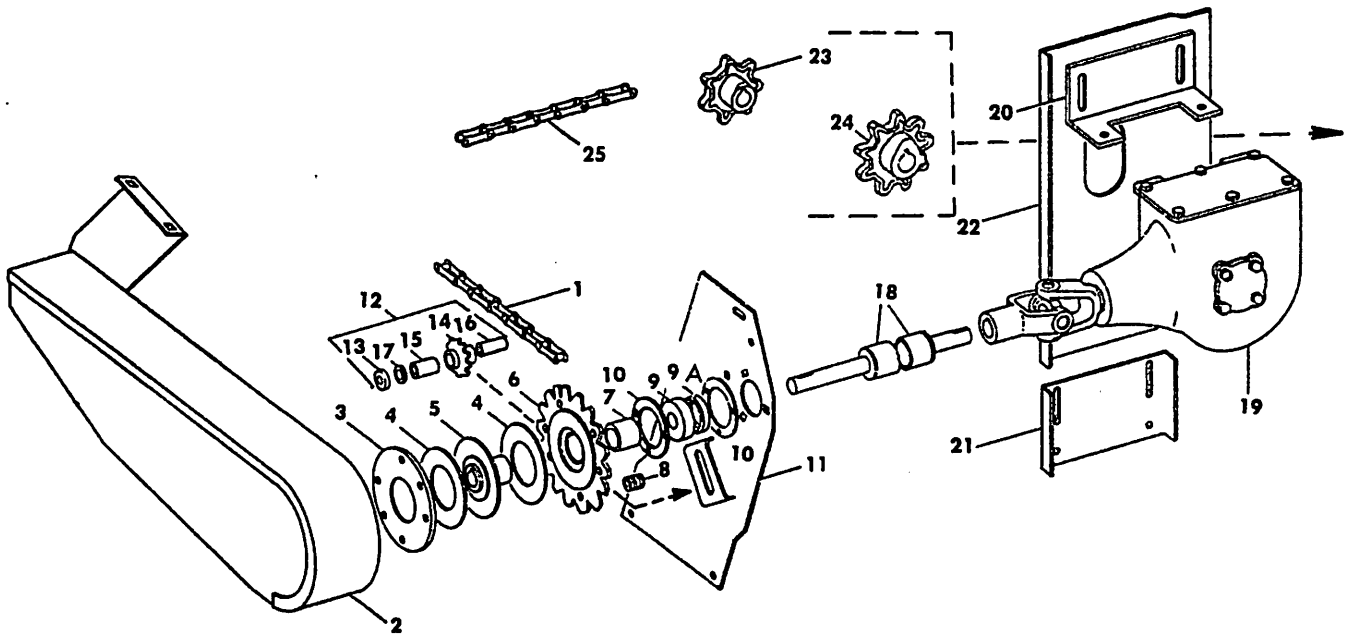
*** Used on and Below Serial No. 6573.

**** Used on and Below Serial No. 6442.

***** Used on and Above Serial No. 6443.

MODEL 220, 221 & 222 MANURE SPREADER

CLUTCH, PROPELLER TUBE AND GEARBOX



Ref. No.	Part No.	No. Used			Description
		220	221	222	
1	56345		*1		Gear Box Drive Chain, RC A-2050 57 25810 Roller Link, RC-2050 1 25193 Coupler Link, RC-2050 1 25819 Offset Link, RC-2050
1A	40254	1	**1	1	Gear Box Drive Chain, RC A-2050 57 25810 Roller Link, RC-2050 1 25193 Coupler Link, RC-2050
2	32577	1	1	1	Chain Guard 2 84826 Carriage Bolt, 5/16" x 3/4" 2 84467 Machine Screw, Truss Hd., 1/4" x 1/2" 2 80681 Lockwasher, 5/16" 2 80682 Lockwasher, 1/4" 2 84943 Hex Nut, 5/16" 2 84944 Hex Nut, 1/4"
3	32464	1	1	1	Clutch Plate
4	32317	2	2	2	Friction Disc
5	32583	1	1	1	Clutch Flange Assembly 1 80768 Key, Woodruff, #808, 1/4" x 1"
6	32581	1	1	1	Clutch Sprocket W/Bushing, #32320
7	32320	1	1	1	Bushing
8	32307	6	6	6	Spring 6 87289 Cap Screw, Hex Hd., 3/8" x 2 1/4" 6 87016 Plain Washer, 3/8"
9	38261	1	1	1	Flange Bearing
9A	38260	1	1	1	Collar
10	36853	2	2	2	Flangette 3 84826 Carriage Bolt, 5/16" x 3/4" 3 80681 Lockwasher, 5/16" 3 84943 Hex Nut, 5/16"
11	40361	1	1	1	Shaft Support Weld Assembly 2 87510 Carriage Bolt, 5/16" x 5/8" 2 80375 Cap Screw, Hex Hd., 3/8" x 3/4" 2 80681 Lockwasher, 5/16" 2 80680 Lockwasher, 3/8" 2 84943 Hex Nut, 5/16" 2 84944 Hex Nut, 3/8"

MODEL 220, 221 & 222 MANURE SPREADER
CLUTCH, PROPELLER TUBE, AND GEARBOX (CONT'D.)

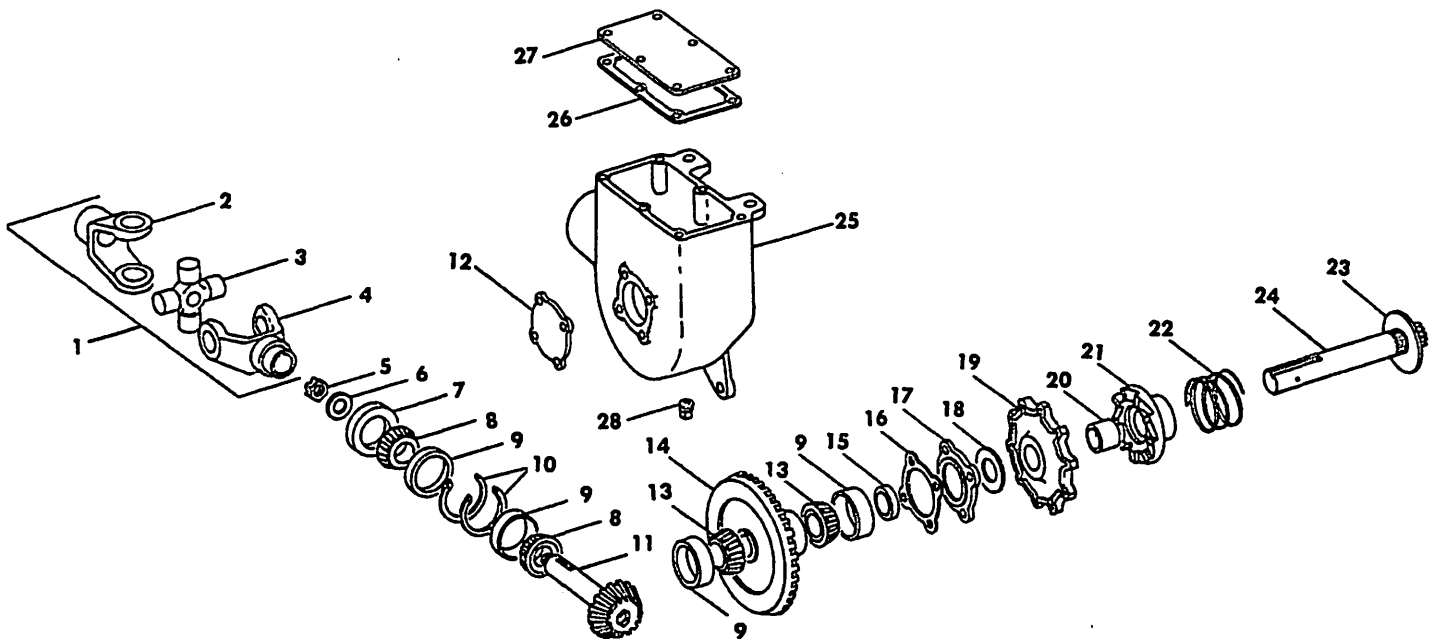
Ref. No.	Part No.	No. Used			Description
		220	221	222	
12	49074	1	1	1	Idler Assembly Complete (Includes Ref. Nos. 13, 14, 16, & 17) 1 87870 Cap Screw, Hex Hd., 7/16" x 3 1/4" 1 81547 Lockwasher, 7/16" 1 84945 Hex Nut, 7/16"
13	48917	3	3	3	Washer, .135" Thick
14	48964	1	1	1	Sprocket W/Bushing #48965
15	48965	1	1	1	Nylon Bushing
16	32318	1	1	1	Bushing
17	34821	4	4	4	Washer, .060" Thick
18	40356	1	1	++	Propeller Tube 1 80753 Cotter Pin, 1/4" x 1 1/2"
18A	59754			+	Propeller Tube Weld Assembly 1 80714 Grease Fitting
19	40362	1	1	++	Gear Box Assembly (See Parts List on Pages 29 & 30) 4 87111 Cap Screw, Hex Hd., 1/2" x 1 1/2" 4 80679 Lockwasher, 1/2" 4 84946 Hex Nut, 1/2"
19A	63338			+	Gear Box Assembly (See Parts List on Pages 28A & 28B) 4 80357 Cap Screw, Hex Hd., 1/2" x 1 1/4" 4 80679 Lockwasher, 1/2"
20	40380	1	1	1	Gear Box Support Bracket, Upper 2 87013 Carriage Bolt, 7/16" x 1 1/4" 2 81541 Plain Washer, 7/16" 2 81547 Lockwasher, 7/16" 2 84945 Hex Nut, 7/16"
21	40936	1	1	1	Gear Box Adjustment Plate 2 87013 Carriage Bolt, 7/16" x 1 1/4" 2 81541 Plain Washer, 7/16" 2 81547 Lockwasher, 7/16" 2 84945 Hex Nut, 7/16"
22	40358	1	1	1	Gear Box Mounting Plate Weld Assembly 3 87237 Carriage Bolt, 3/8" x 1" 1 87527 Carriage Bolt, 3/8" x 1 3/4" 1 84890 Carriage Bolt, 7/16" x 1" 2 87515 Carriage Bolt, 7/16" x 1 3/4" 4 80680 Lockwasher, 3/8" 3 81547 Lockwasher, 7/16" 4 84944 Hex Nut, 3/8" 3 84945 Hex Nut, 7/16"
23	35985	1	1	1	Sprocket, 7T 1 84322 Key, Woodruff, #608, 3/16" x 1" 1 87516 Roll Pin, 1/4" x 1 5/8"
24	35986	1	1	1	Sprocket, 9T 1 84848 Key, Woodruff, #27, 1/4" x 2 1/8" 1 80420 Set Screw, Headless Socket, Cup Pt., 1/2" x 1" 1 84958 Hex Jam Nut, 1/2"
25	35991	1	1	1	Beater Drive Chain, # A-550 43 65140 Regular Link, # A-550 1 65139 Coupler Link, # A-550 1 65141 Offset Link, # A-550

*Used on and above Serial No. 3478.
 **Used on and below Serial No. 3477.
 +Used on and above Serial No. 7917.
 ++Used on and below Serial No. 7916.

MODEL 220, 221 & 222 MANURE SPREADER

GEARBOX

(Used on all 220, 221 and on and below 222 Serial No.7916)



Ref. No.	Part No.	No. Used			Description
		220	221	222	
1	52536	1	1	1	Universal Joint
2	32673	1	1***1		Front Yoke 1 80768 Key, Woodruff, #808, 1/4" x 1"
	52537		**1		Front Yoke
3	29538	1	1***1		Spider & Bearing Assembly
	39360		**1		Spider & Bearing Assembly 1 80711 Grease Fitting, 67 1/2 ° 1/8" NPT
3A	43454	1	1***1		Spider & Bearing Service Kit
	46452		**1		Spider & Bearing Service Kit
4	32672	1	1***1		Rear Yoke
	52538		**1		Rear Yoke 1 80765 Key, Woodruff, #809, 1/4" x 1 1/8"
5	116311	1	1	1	Special Hex Nut
6	11438	1	1	1	Washer
7	29142	1	1	1	Oil Seal
8	29139	2	2	2	Tapered Roller Bearing Cone
9	28966	4	4	4	Tapered Roller Bearing Cup
10	32324	2	2	2	Snap Ring
11	32330	1	1	1	Bevel Pinion 1 80750 Cotter Pin, 1/8" x 1 1/4"
12	32483	1	1	1	Bearing Cap 4 80366 Cap Screw, Hex Hd., 5/16" x 1" 4 80674 Lockwasher, 5/16"
13	29140	2	2	2	Tapered Roller Bearing Cone
14	32329	1	1	1	Bevel Gear 1 32468 Key, Square, 5/16" x 2 1/4" 1 28723 Drilled Rivet 1 80742 Cotter Pin, 1/8" x 3/4"
15	29141	1	1	1	Oil Seal

**Used on and above Serial No. 6018.

***Used on and below Serial No. 6017.

MODEL 220, 221 & 222 MANURE SPREADER

GEARBOX (CONT'D.)

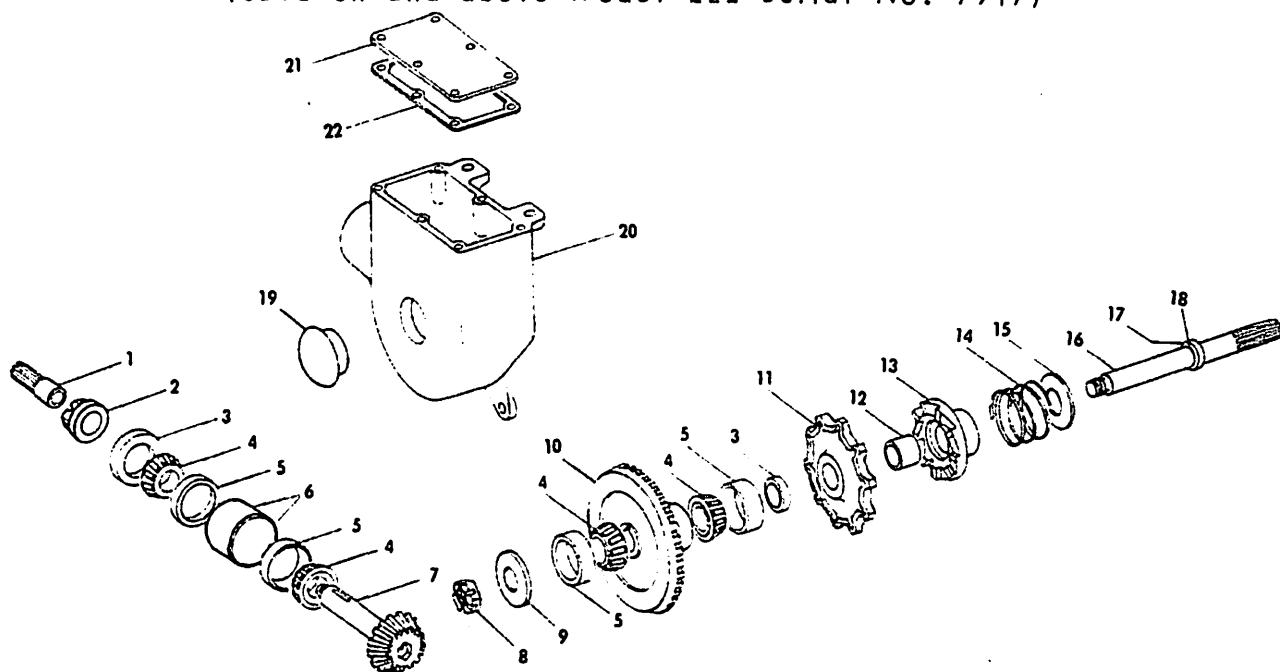
(Used on all 220, 221 and on and below 222 Serial No.7916)

Ref. No.	Part No.	No. Used			Description
		220	221	222	
16	34258	AR	AR	AR	Shim, .005"
	34259	AR	AR	AR	Shim, .007"
	34260	AR	AR	AR	Shim, .020"
17	32482	1	1	1	Seal Closure
					4 80366 Cap Screw, Hex Hd., 5/16" x 1"
					4 80674 Lockwasher, 5/16"
18	40957	1	1	1	Washer
19	64841	1	1	1	Sprocket Assembly W/Bushing
20	40699	1	1	1	Bushing
21	40702	1	1	1	Clutch Hub
					1 80721 Grease Fitting, 45°, 1/4"-28
22	40701	1	1	1	Spring
23	40956	1	1	1	Washer
24	40394	1	1	1	Shaft
					1 80736 Cotter Pin, 3/16" x 1 3/4"
25	32481	1	1	1	Gear Box
26	39454	1	1	1	Gasket
27	32461	1	1	1	Gear Box Cover
					6 80353 Cap Screw, Hex Hd., 5/16" x 1/2"
					6 80674 Lockwasher, 5/16"
28	84296	1	*1		Pipe Plug, 1/2" (Std.)

*Used on and below Serial No. 3477.

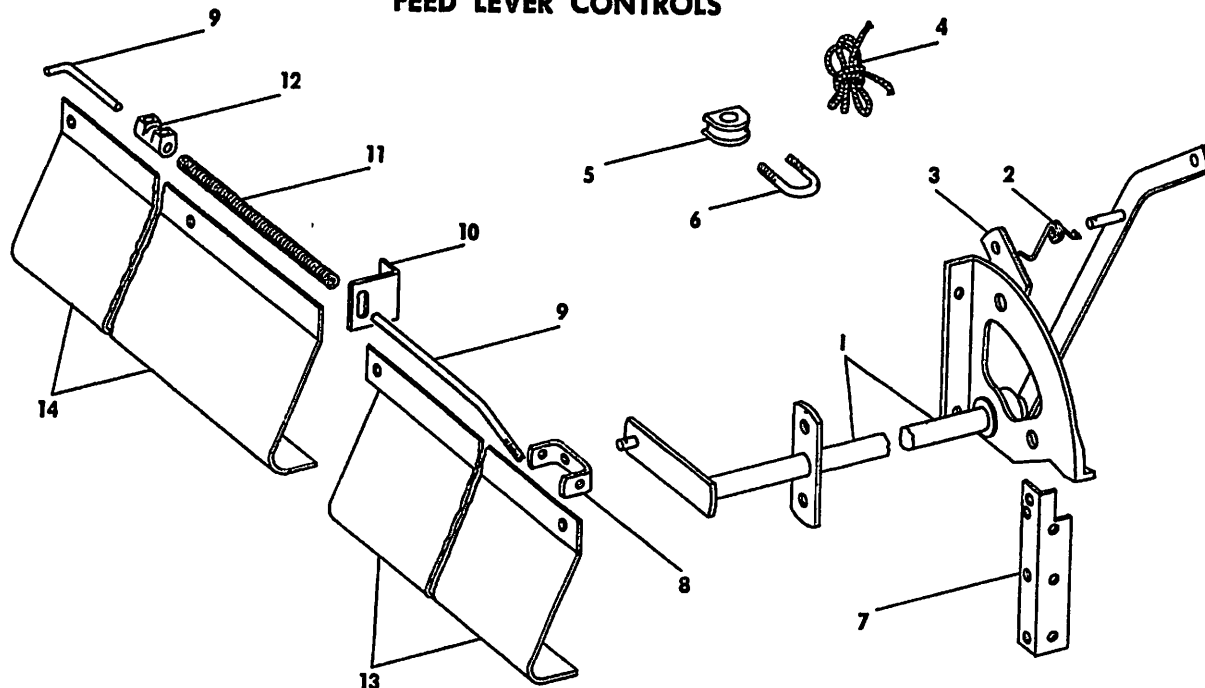
MODEL 222 MANURE SPREADER GEARBOX

(Used on and above Model 222 Serial No. 7917)



Ref. No.	Part No.	No. Used	Description
1	59757	1	Adapter Weld Assembly 1 84361 Woodruff Key, #21 - 1/4" x 1 1/4" 1 80424 Set Screw, Hex Socket Cup Pt., 3/8" x 5/8" 1 84956 Hex Jam Nut, 3/8"
2	59666	1	Slotted Hex Nut 1 80618 Cotter Pin, 1/8" x 2"
3	37706	2	Oil Seal
4	36726	4	Tapered Roller Bearing Cone
5	36723	4	Tapered Roller Bearing Cup
6	59684	1	Sleeve
7	63234	1	Pinion
8	116311	1	Slotted Hex Nut 1 80750 Cotter Pin, 1/8" x 1 1/4"
9	56867	1	Washer
10	63311	1	Bevel Gear 1 87897 Woodruff Key, #27 - 1/4" x 2 1/8"
11	64841	1	Clutch W/Bushing #40699
12	40693	1	Bushing
13	40702	1	Clutch Hub 1 80721 Grease Fitting
14	40701	1	Spring
15	40956	1	Washer
16	59685	1	Out Put Shaft W/Sleeve & Ring 1 80736 Cotter Pin, 3/16" x 1 3/4"
17	59679	1	Sleeve
18	59667	1	Retaining Ring
19	56868	1	Hub Cap
20	59681	1	Gear Box 1 80386 Set Screw, Sq. Hd. Cup Pt., 3/8" x 1" 1 84956 Hex Jam Nut, 3/8"
21	59734	1	Gear Box Cover 6 80330 Cap Screw, 5/16" x 3/4" 6 80674 Lockwasher, 5/16"
22	59733	1	Gasket

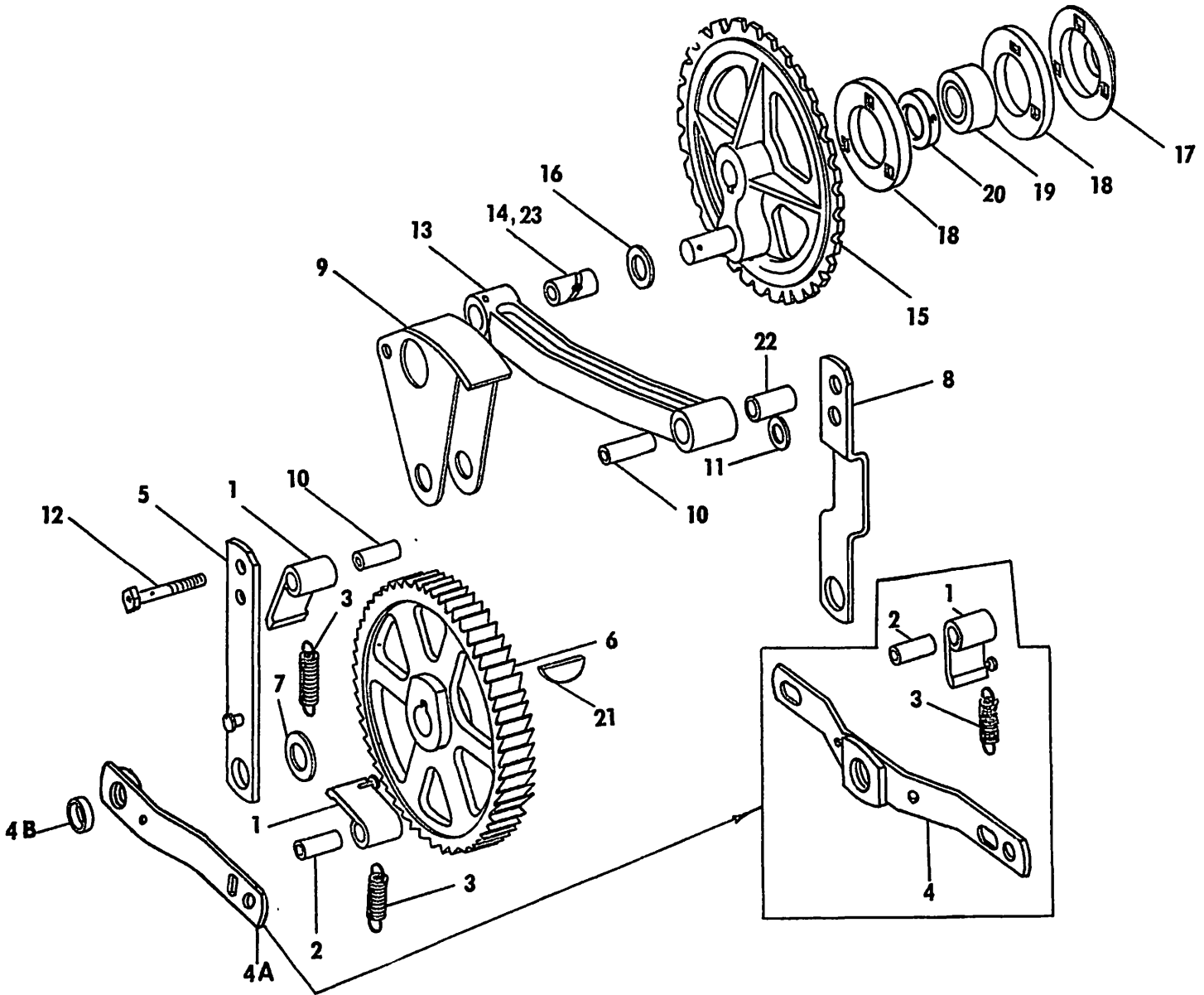
MODEL 220, 221 & 222 MANURE SPREADER FEED LEVER CONTROLS



Ref. No.	Part No.	No. Used			Description
		220	221	222	
1	40355	1	1	1	Feed Lever Weld Assy.
					2 84823 Carr. Bolt $\frac{3}{8}$ " x $1\frac{1}{2}$ "
					2 84826 Carr. Bolt $\frac{5}{16}$ " x $\frac{3}{4}$ "
					1 87049 Cap Screw, Hex Hd. $\frac{3}{8}$ " x 1"
					1 80477 Cap Screw, Hex Hd. $\frac{3}{8}$ " x 2"
					3 80680 Lockwasher $\frac{3}{8}$ "
					2 80681 Lockwasher $\frac{5}{16}$ "
					5 84944 Nut $\frac{3}{8}$ "
					2 84943 Nut $\frac{5}{16}$ "
2	39122	1	1	1	Torsion Spring
3	39124	1	1	1	Quadrant Pawl
					1 84915 Plain Washer $\frac{1}{2}$ "
					1 80741 Cotter Pin $\frac{1}{8}$ " x 1"
4	39159	1	1	1	Control Rope
5	28110	1	1	1	Twine Guide
6	28114	1	1	1	Twine Guide "U" Bolt
					2 80684 Lockwasher #10
					2 80611 Nut #10
7	39121	1	1	1	Quadrant Support
					2 80375 Cap Screw, Hex Hd. $\frac{3}{8}$ " x $\frac{3}{4}$ "
					2 80680 Lockwasher $\frac{3}{8}$ "
					2 84944 Nut $\frac{3}{8}$ "
8	32445	1	1	1	Clip
					1 87363 Plain Washer $\frac{7}{16}$ "
					1 80756 Cotter Pin $\frac{1}{8}$ " x $\frac{3}{4}$ "
9	40363	1	1	1	Control Rod
					1 87348 Plain Washer $\frac{7}{16}$ "
					1 80756 Cotter Pin $\frac{1}{8}$ " x $\frac{3}{4}$ "
					2 84957 Jam Nut $\frac{7}{16}$ "
10	40365	1	1	1	Clip
					1 87515 Carr. Bolt $\frac{7}{16}$ " x $1\frac{1}{4}$ "
					1 81547 Lockwasher $\frac{7}{16}$ "
					1 84945 Nut $\frac{7}{16}$ "
11	32305	2	2	2	Spring
12	32484	1	1	1	Control Rod Set Collar
					2 80389 Set Screw, Sq. Hd. $\frac{5}{16}$ " x $\frac{1}{2}$ "
13	41228	1	1	1	Control Rod Guard, Front
					1 84867 Carr. Bolt $\frac{3}{8}$ " x $\frac{3}{4}$ "
					1 80680 Lockwasher $\frac{3}{8}$ "
					1 84944 Nut $\frac{3}{8}$ "
14	41078	1	1	1	Control Rod Guard
					1 84867 Carr. Bolt $\frac{3}{8}$ " x $\frac{3}{4}$ "
					1 80680 Lockwasher $\frac{3}{8}$ "
					1 84944 Nut $\frac{3}{8}$ "

MODEL 220, 221 & 222 MANURE SPREADER

PAWLS, RATCHET WHEEL, CRANK AND SPROCKET



Ref. No.	Part No.	No. Used 220	No. Used 221	No. Used 222	Description
1	39784 39784	3	3	AR	Pawl Weld Assy. (2 Used Below 222 Serial No. 7011. 1 Used Above 222 Serial No. 7012.)
2	32319	2	2	AR	Bushing (2 Used Below 222 Serial No. 7011.) (1 Used Above 222 Serial No. 7012.)
					2 87186 Cap Screw, Hex Hd. 1/2" x 2 3/4"
					2 87364 Plain Washer 1/2"
					2 80679 Lockwasher 1/2"
					2 84946 Nut 1/2"
3	32306	3	3	AR	Spring (3 Used Below 222 Serial No. 7011.) (2 Used Above 222 Serial No. 7012.)
4	49090	1	1	**1	Pawl Support Assy. w/bushing
					2 87401 Cotter Pin 1/4" x 1"
					1 87111 Cap Screw, Hex Hd. 1/2" x 1 1/2"
					1 80679 Lockwasher 1/2"
					1 84946 Nut 1/2"

CONTINUED

MODEL 220, 221 & 222 MANURE SPREADER

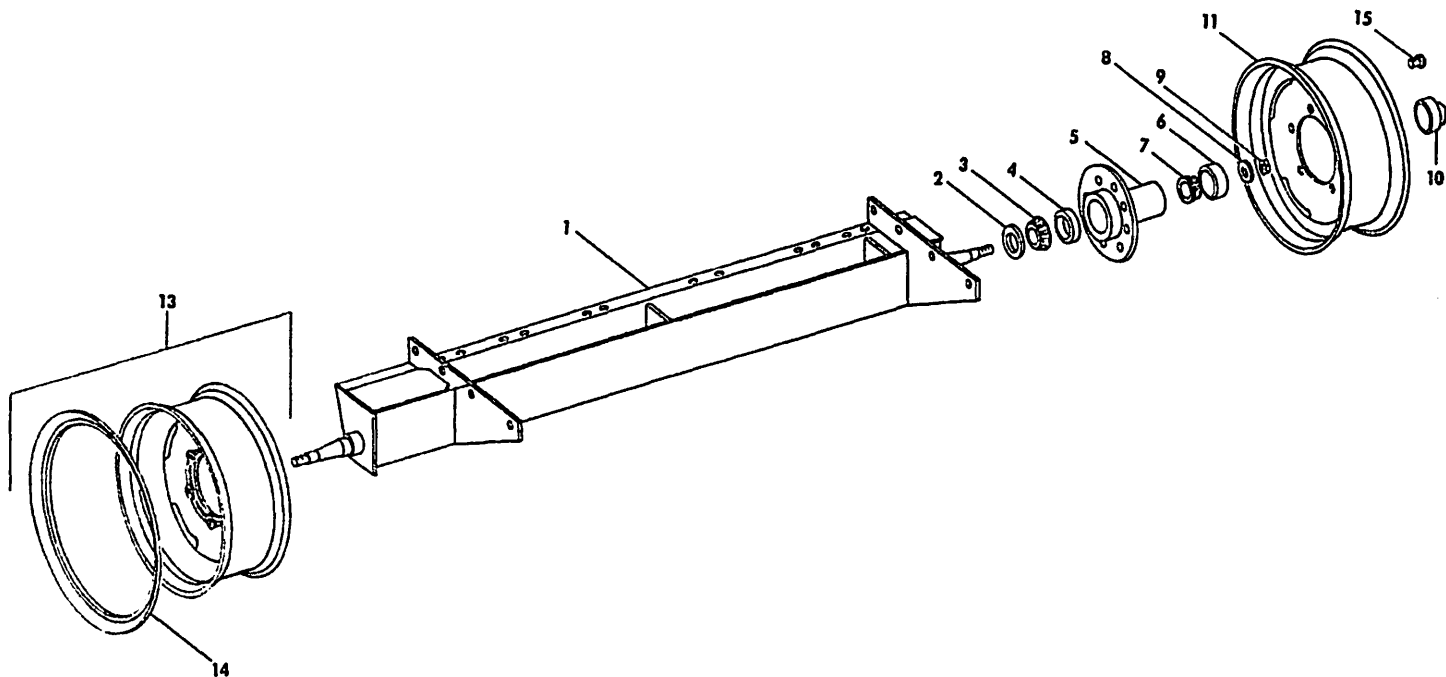
PAWLS, RATCHET WHEEL, CRANK AND SPROCKET (CONT'D.)

Ref. No.	Part No.	No. Used			Description
		220	221	222	
4A	59947			*1	Pawl Support Assy. w/busing — 49076 1 80453 Cotter Pin 1/4" x 1" 1 80369 Cap Screw 1/2" x 2 3/4" 1 84915 Plain Washer 1/2" 1 80671 Lockwasher 1/2" 1 84932 Nut 1/2"
4B	49076	1	1	1	Nylon Bushing
5	40353	1	1	1	Pawl Pivot Arm, Outside
6	39845	1	1	1	Ratchet Wheel
7	32455	1	1	1	Washer
8	40364	1	1	1	Pawl Pivot Arm, Inside
9	40354	1	1	1	Pawl Guide Weld Assy.
10	40367	2	2	2	Spacer, Split
11	01081	6	6	6	Washer 1 87040 Cap Screw, Hex Hd. 1/2" x 3 1/2" 1 80679 Lockwasher 1/2" 1 84946 Nut 1/2"
12	87040	1	1	1	Cap Screw, Hex Hd. 1/2" x 3 1/2" 1 80679 Lockwasher 1/2" 1 84946 Hex Nut 1/2"
13	49095	1	1	1	Crank Rod w/Bushings Ref. Nos. 22 & 23. 1 80714 Grease Fitting
14	37466	1	1		Bushing
15	40357	1	1	1	Sprocket Assy. 1 80399 Set Screw, Sq. Hd. 1/2" x 1 1/4" 1 84970 Hex Jam Nut 1/2" 1 84848 Woodruff Key
16	37107	2	2	2	Washer 1 80734 Cotter Pin 1/4" x 1 3/4"
17	40704	1	1	1	Seal
18	40697	2	2	2	Flangette 3 87237 Carr. Bolt 3/8" x 1" 3 80680 Lockwasher 3/8" 3 84944 Nut 3/8"
19	38766	1	1	1	Bearing
20	38767	1	1	1	Collar 1 80429 Set Screw Hex Socket Hd'less cup pt. 5/16" x 5/16"
21	45319	1	1	1	Special Key
22	49077			1	Nylon Bushing
23	49075			1	Bushing

*Used on and above Serial No. 7012.
 **Used on and below Serial No. 7011.

MODEL 220, 221 & 222 MANURE SPREADER

AXLE GROUP



Ref. No.	Part No.	No. Used			Description
		220	221	222	
1	40359 56878	1	1	**1 *1	Axle Support Weld Assy. Axle Support Weld Assy.
2	13548	2	2	2	Grease Seal
3	13540	2	2	2	Wheel Bearing Cup
4	13958	2	2	2	Inner Bearing Cup
5	13538	2	2	**2	Hub w/cups and Cap
5A	56871			*2	Wheel Hub
6	13957	2	2	**2	Outer Bearing Cup
6A	36723			*2	Outer Bearing Cup
7	13539	2	2	**2	Wheel Bearing Outer
7A	36726			*2	Wheel Bearing Outer
8	13541	2	2	**2	Spindle Washer
8A	56867			*2	Spindle Washer
9	87103	2	2	2	Spindle Nut
10	13960	2	2	2	Hub Cap for Threaded Hub
10A	72015	2	2	**2	Pressure Type Hub Cap
10B	56868			*2	Pressure Type Hub Cap
11	13537	2	2	2	Ground Wheel 24" x 5.50" (Opt.)
12	42769	2	2	2	Wheel Assy. 20 x 7 wide disc wheel For Truck Tires
13	33017	2	2	2	Wheel Assy. with demountable side ring for Truck Tires.
14	37314	2	2	2	Side Ring (Used with Detachable Ring Wheel)
15	13542	16	16	16	Hub Bolt
				2	36108 Tire 7.50 x 20
				2	36109 Tube 7.50 x 20

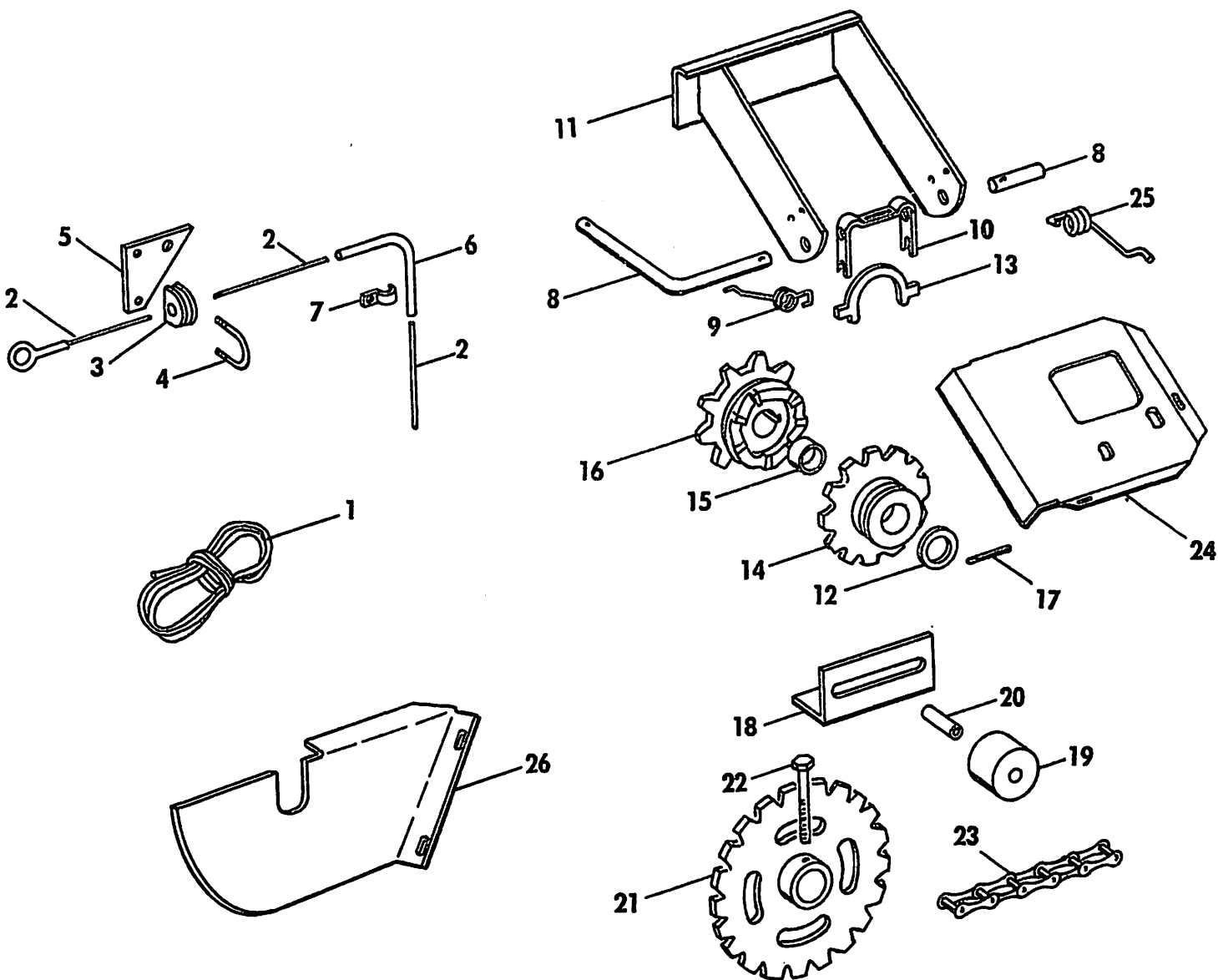
* Used on and Above Serial No. 6800.

** Used on and Below Serial No. 6799.

44576 Decal set for Model 200.

44577 Decal set for Models 220 & 221.

**MODEL 221 & 222 MANURE SPREADER
CLEANOUT DRIVE GROUP**



Ref. No.	Part No.	No. Used		Description
		221	222	
1	39159	1	1	Control Rope
2	45673	1	1	Cable
3	28110	1	1	Twine Guide
4	28114	1	1	Twine Guide "U" Bolt
5	43043	1	1	Insulator Bracket
				1 87512 Carr. Bolt, 5/16" x 1"
				1 80681 Lockwasher 5/16"
				1 84943 Nut, 5/16"
6	44630	1	1	Guide
7	46214	1	1	Clip
8	45670	1	1	Shaft
				1 87427 Rd. Hd. Mach. Screw, 3/16" x 1/2"
				1 84850 Sq: Nut, 3/16"
9	45669	1	1	Yoke Return Spring, Front

CONTINUED

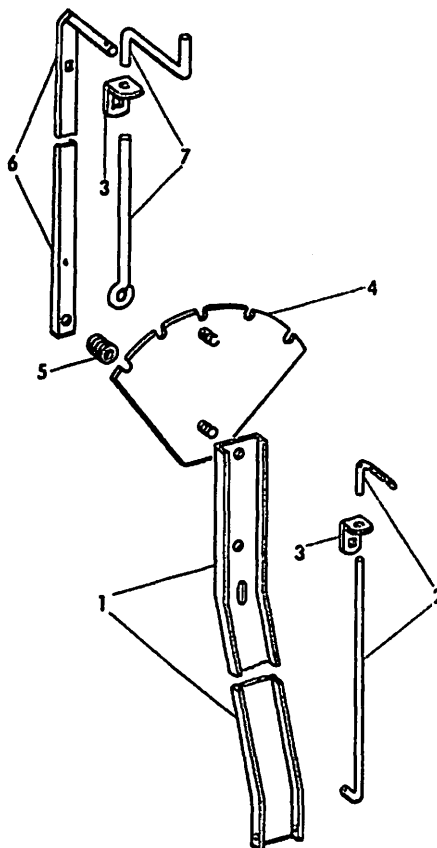
MODEL 221 & 222 MANURE SPREADER

CLEANOUT DRIVE GROUP (CONT'D.)

Ref. No.	Part No.	No. Used		Description
		221	222	
10	34048	1	1	Clutch Fork 2 80964 Cap Screw, Hex. Hd., 1/4" x 3/4" 2 80675 Lockwasher, 1/4"
11	45668	1	1	Bracket Weld Assy. 2 84826 Carr. Bolt, 5/16" x 3/4" 2 80681 Lockwasher, 5/16" 2 84943 Nut, 5/16"
12	32455	1	1	Washer
13	34046	1	1	Clutch Yoke
14	45704	1	1	Sprocket and Bushing Assy., 13 Tooth
15	37136	2	2	Bushing
16	45680	1	1	Sprocket, 9 Tooth 1 84848 Woodruff Key 1 80420 Set Screw, Hollow Hd. 1/2" x 1" 1 84958 Nut, 1/2"
17	87343	1	1	Roll Pin, 1/4" x 1 3/4"
18	45674	1	1	Idler Bracket 2 87149 Cap Screw, Hex. Hd. 5/16" x 3/4" 2 80681 Lockwasher, 5/16" 2 84943 Nut, 5/16"
19	39910	1	1	Idler Block
20	32318	1	1	Bushing 1 87181 Cap Screw, Hex. Hd., 7/16" x 3" 3 81541 Plainwasher, 7/16" 1 81547 Lockwasher, 7/16" 1 84945 Nut, 7/16"
21	45695	1	1	Sprocket, 22 Tooth
22	87146	1	1	Cap Screw, Hex. Hd., 1/4" x 2 1/2" 1 80682 Lockwasher, 1/4" 1 84942 Nut, 1/4"
23	45694	1	1	Apron Drive Chain
23A	25810	39	39	Roller Link
23B	25193	1	1	Coupler Link
24	45678	1	1	Shield 2 84467 Truss Hd., Mach. Screw, 1/4" x 1/2" 1 87139 Cap Screw, Hex. Hd., 1/4" x 3/4" 2 80766 P.K. Type Z Self Tapping Screw, Rd. Hd., 3/16" x 3/8" 3 80682 Lockwasher, 1/4" 3 84942 Nut, 1/4"
25	58412	1	1	Yoke Return Spring, Rear
26	59455	1	1	Chain Shield 2 87149 Cap Screw 5/16" x 3/4" 2 80664 Plain Washer 5/16" 2 80681 Lockwasher 5/16" 2 84943 Nut 5/16" 2 87149 cap screw 5/16" x 3/4" 2 87096 cap screw, Hex Hd. 5/16" x 1"

MODEL 200 & 202 MANURE SPREADER ATTACHMENT

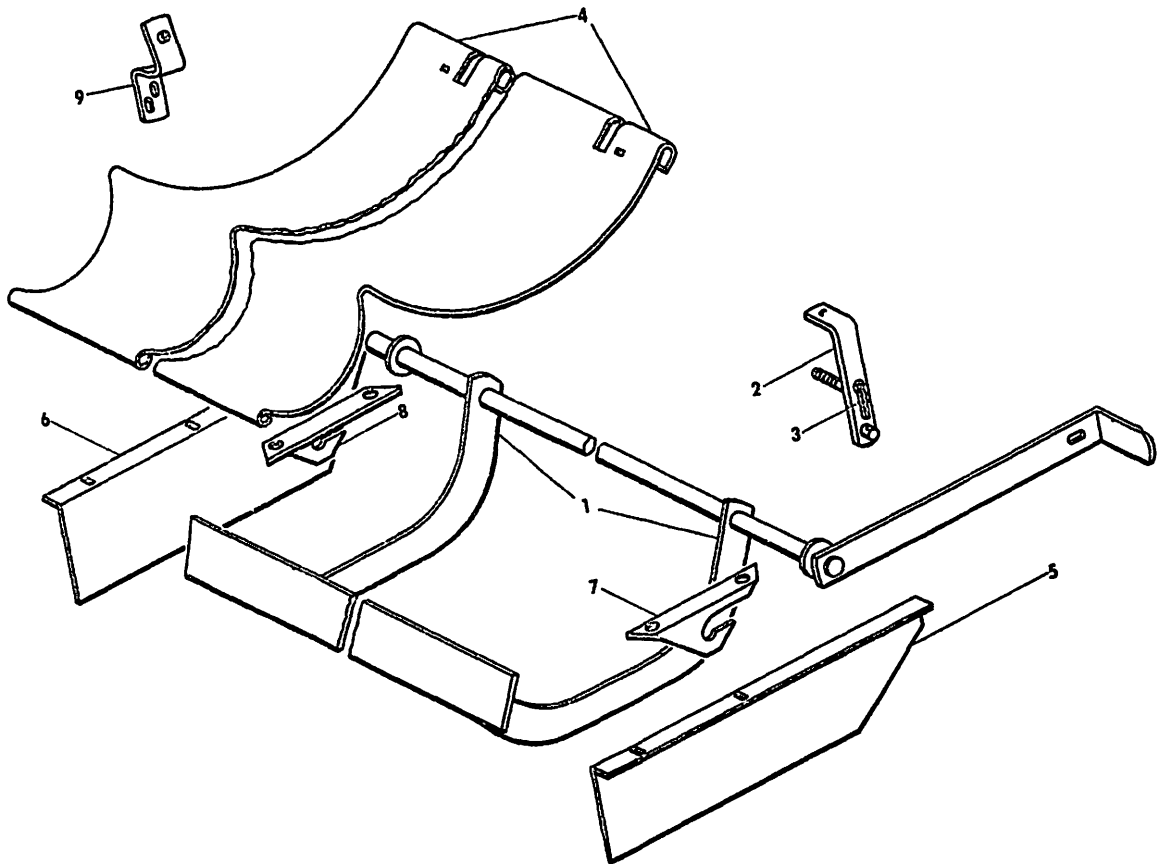
83228 EXTENSION HANDLE ATTACHMENT



Ret. No.	Part No.	No. Used	Description
1	83228 36130	1	Extension Handle Attachment (Includes following parts)
		2	Brace
		2	87143 Hex Hd. Cap Screw 1/4" x 1 3/4"
		2	80682 Lockwasher 1/4"
2	36129	2	84942 Nut 1/4"
		2	Quadrant Lock Rod, Lower
		6	80702 Plainwasher 3/8"
3	34806	2	80756 Cotter Pin 1/8" x 3/4"
		2	Guide
		2	84867 Carriage Bolt 3/8" x 3/4"
4	34814	2	80680 Lockwasher 3/8"
		2	84944 Nut 3/8"
		2	Lever Quadrant Weld Assembly
5	32307	2	80702 Plainwasher 3/8"
		2	80680 Lockwasher 3/8"
		2	84944 Hex Nut 3/8"
		4	84040 Lock Nut 3/8"
6	34810	2	Spring
7	34817	2	Lever Extension Weld Assembly
		2	Lockrod Extension

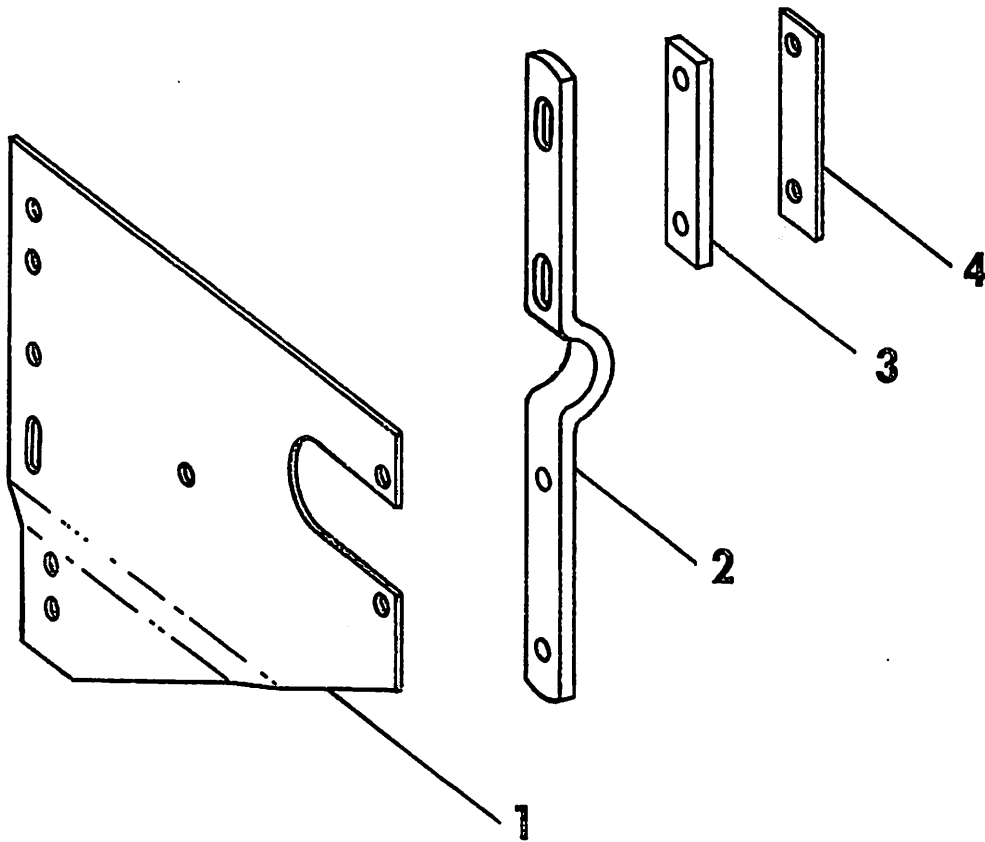
MODELS 200, 202, 220, 221 & 222 MANURE SPREADER ATTACHMENTS

83694 FINE MANURE ATTACHMENT



Ref. No.	Part No.	No. Used	Description
	83694	1	Fine Manure Attachment (Includes following parts)
1	38325	1	Pan Linkage Weld Assembly
2	38321	1	Lever Guide Weld Assembly
	2 84943		Hex Nut 5/16"
	1 87096		Cap Screw Hex Head 5/16" x 1"
	1 80681		Lockwasher 5/16"
	1 84943		Nut 5/16"
3	37851	1	Hairpin Cotter
4	36396	1	Beater Pan
	4 80298		Carriage Bolt 5/16" x 1½"
	4 80681		Lockwasher 5/16"
	4 84943		Nut 5/16"
5	37702	1	Pan Plate, Right (Used w/300)
5A	41033	1	Pan Plate, Right (Not Shown) (Used w/200 & 220)
	2 87149		Cap Screw Hex Head 5/16" x ¾"
	2 80681		Lockwasher 5/16"
	2 84943		Nut 5/16"
6	37703	1	Pan Plate, Left
	2 87149		Cap Screw Hex Head 5/16" x ¾"
	2 80681		Lockwasher 5/16"
	2 84943		Nut 5/16"
7	46917	1	Pivot Bracket, Left
	1 87149		Cap Screw Hex Head 5/16" x ¾"
	1 80681		Lockwasher 5/16"
	1 84943		Nut 5/16"
8	46918	1	Pivot Bracket, Right
	1 87149		Cap Screw Hex Head 5/16" x ¾"
	1 80681		Lockwasher 5/16"
	1 84943		Nut 5/16"
9	58002	1	Level Guide Weld Assy.
	2 87513		Carriage Bolt 5/16" x 1¼"
	2 87362		Plain Washer 5/16"
	2 80681		Lockwasher 5/16"
	2 84943		Nut 5/16"

**MODELS 200, 220 & 221 MANURE SPREADER ATTACHMENTS
99228 FLUID END GATE ATTACHMENT
SUPPORTS L. H.**

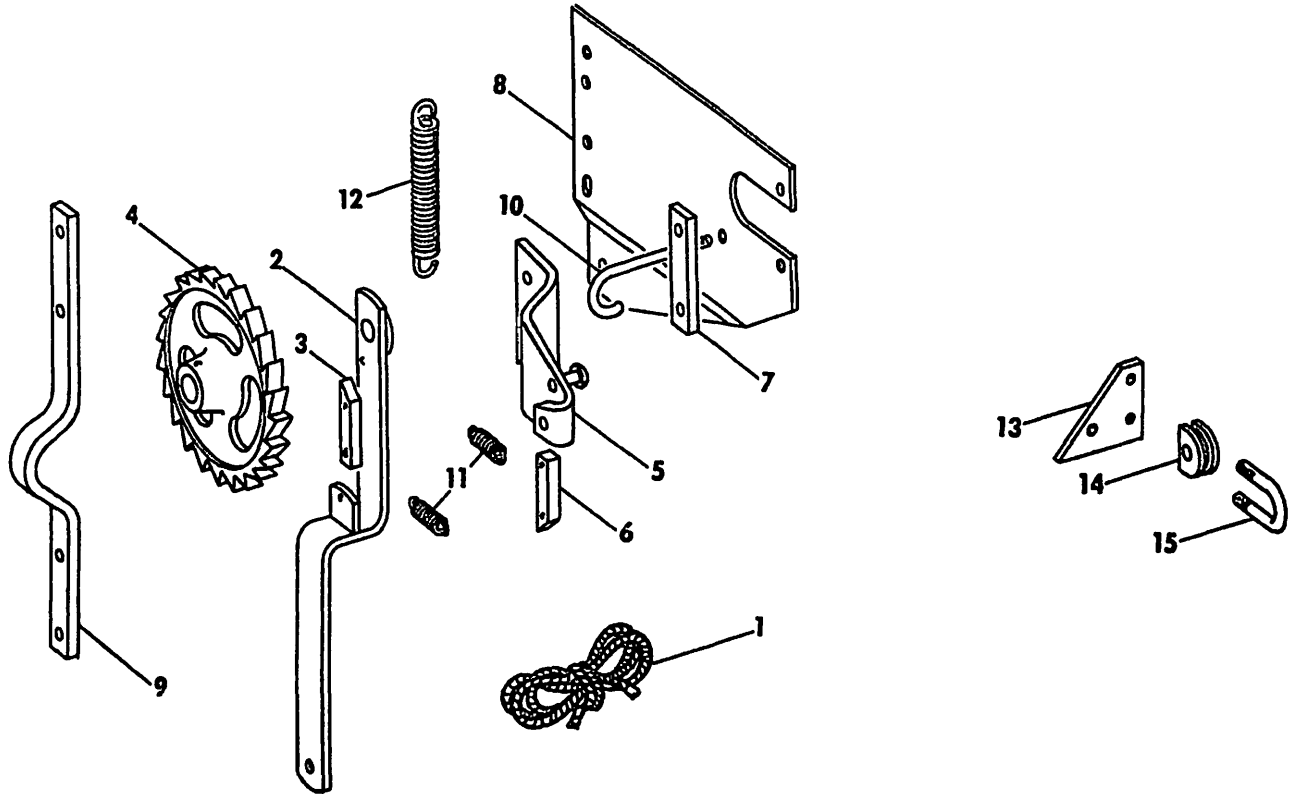


Ref. No.	Part No.	No. Used	Description
1	43013	1	Mounting Plate, L. H.
			1 87150 Cap Screw, Hex Hd., 5/16" x 1 1/4"
			1 80681 Lockwasher, 5/16"
			1 84943 Nut, 5/16"
2	43042	1	Brace
			2 84870 Cap Screw, Hex Hd., 3/8" x 1 1/4"
			2 87494 Carr. Bolt, 3/8" x 1 1/4"
			4 80680 Lockwasher, 3/8"
			4 84944 Nut, 3/8"
3	43016	1	Spacer
4	43015	1	Bearing Stop
			2 84870 Cap Screw, Hex Hd., 3/8" x 1 1/4"
			2 80680 Lockwasher, 3/8"
			2 84944 Nut, 3/8"

MODELS 200, 220 & 221 MANURE SPREADER ATTACHMENTS

99228 FLUID END GATE ATTACHMENT

SUPPORTS AND CONTROLS, R. H.



Ref. No.	Part No.	No. Used	Description
1	43240	1	Control Rope
2	43029	1	Lever Weld Assembly
3	43030	1	Pawl
		1	80453 Cotter Pin, 1/4" x 1"
		1	87334 Roll Pin, 1/4" x 1 1/4"
		1	80459 Cotter Pin, 3/16" x 3/4"
4	43012	1	Ratchet Wheel
		1	87516 Roll Pin, 1/4" x 1 5/8"
5	43026	1	Pawl Support Weld Assembly
6	43030	1	Pawl
		1	87334 Roll Pin, 1/4" x 1 1/4"
		1	80106 Stove Bolt, 3/16" x 2"
		2	84850 Sq. Nut, 3/16"
7	43016	1	Spacer
		1	25469 Adj. Screw
		1	87162 Cap Screw, Hex Hd., 3/8" x 1 1/2"
		1	80680 Lockwasher, 3/8"
		1	84944 Nut, 3/8"
		2	84969 Hex Jam Nut, 3/8"
8	43014	1	Mounting Plate, R. H.
		1	87401 Cotter Pin, 1/4" x 1"
		1	87150 Cap Screw, Hex Hd., 5/16" x 1 1/4"
		1	80681 Lockwasher, 5/16"
		1	84943 Nut, 5/16"
9	43042	1	Brace
		2	84870 Cap Screw, Hex Hd., 3/8" x 1 1/4"
		2	87494 Carr. Bolt, 3/8" x 1 1/4"
		4	80680 Lockwasher, 3/8"
		4	84944 Nut, 3/8"
10	43017	1	Stop
		2	87017 Hex Jam Nut, 7/16"

(CONTINUED)

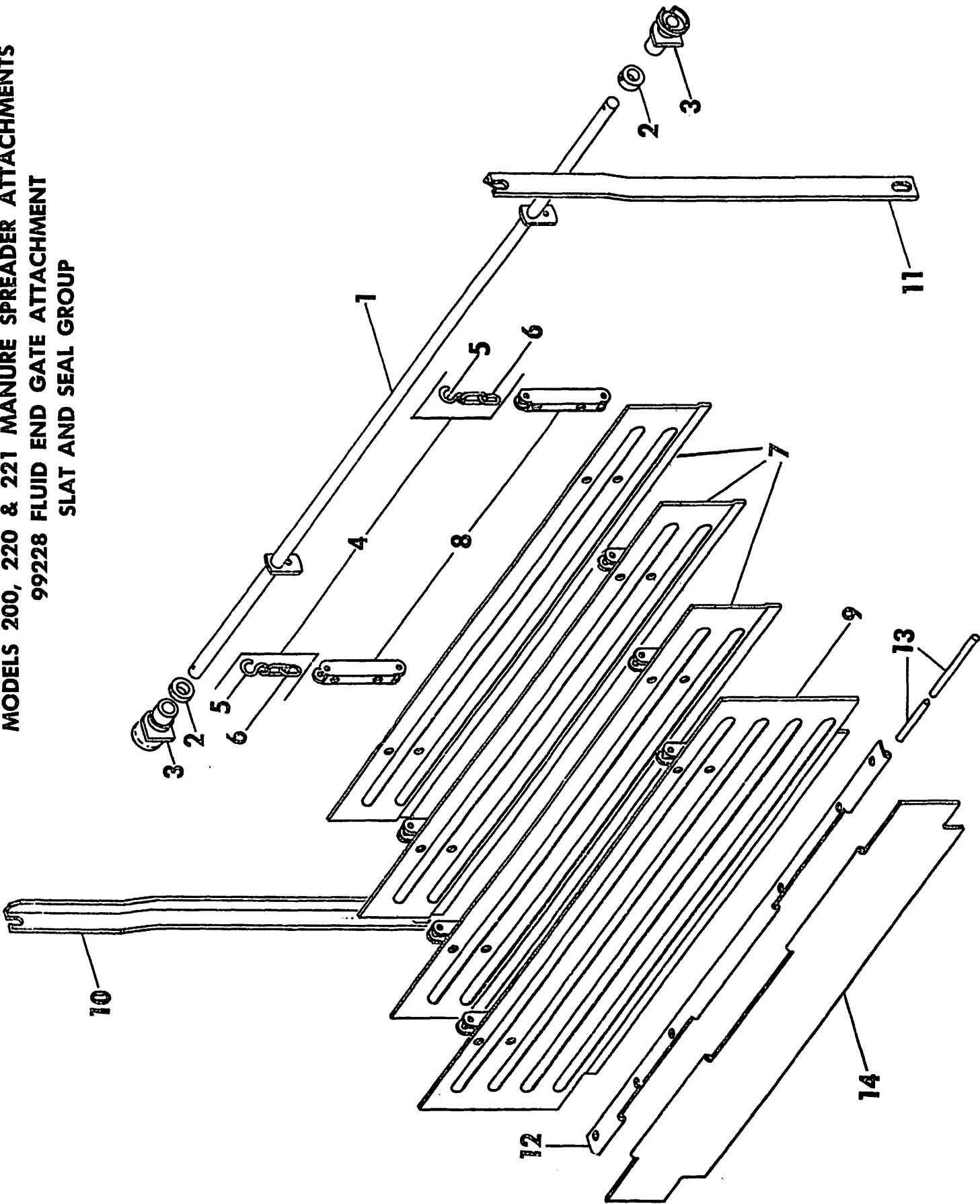
MODELS 200, 220 & 221 MANURE SPREADER ATTACHMENTS

99228 FLUID END GATE ATTACHMENT

SUPPORTS AND CONTROLS, R. H. (CONT'D.)

Ref. No.	Part No.	No. Used	Description
11	38669	2	Spring
12	29579	1	Spring
13	43043	1	Insulator Bracket
			1 87512 Carr. Bolt, 5/16" x 1"
			1 80681 Lockwasher, 5/16"
			1 84943 Nut, 5/16"
14	28110	1	Twine Guide
15	28114	1	Twine Guide "U" Bolt
			2 80611 Sq. Nut #10

**MODELS 200, 220 & 221 MANURE SPREADER ATTACHMENTS
99228 FLUID END GATE ATTACHMENT
SLAT AND SEAL GROUP**



MODELS 200, 220 & 221 MANURE SPREADER ATTACHMENTS

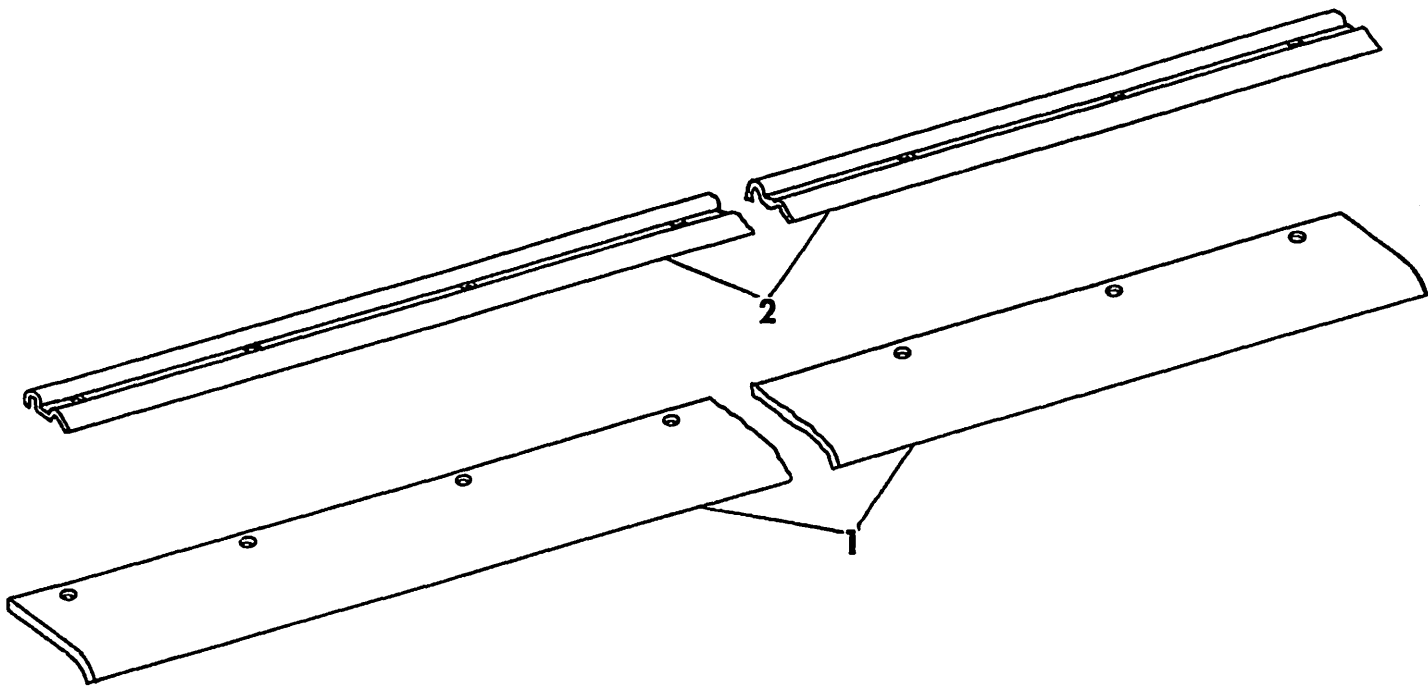
99228 FLUID END GATE ATTACHMENT

SLAT AND SEAL GROUP

Ref. No.	Part No.	No. Used	Description
1	43046	1	Elevating Shaft Weld Assembly
			7 25069 Washer
			1 87402 Cotter Pin, 1/4" x 1 1/4"
2	35976	2	Set Collar
			4 80425 Hollow Hd., Set Screw, 3/8" x 3/8"
3	32497	2	Elevating Shaft Bearing
			1 80710 Grease Fitting
			1 80711 Grease Fitting
4	43179	2	Chain and Hook Assembly
5	34455	2	"S" Hook
6	43018	2	Chain
7	43103	3	Upper Slat with Link
			8 80351 Cap Screw, Hex Hd., 5/16" x 1 1/2"
			8 80198 Hex Locknut, 5/16"
8	43112	8	Link
			16 80598 Truss Hd. Rivet, 1/4" x 3/8"
9	43101	1	Lower Slat with Link
10	43044	1	Gate Stop, R. H.
			1 84826 Carr. Bolt, 5/16" x 3/4"
			1 87618 Carr. Bolt, 7/16" x 2"
			1 87362 Plainwasher, 5/16"
			1 80702 Plainwasher, 7/16"
			1 80681 Lockwasher, 5/16"
			1 81547 Lockwasher, 7/16"
			1 84943 Nut, 5/16"
			1 84945 Nut, 7/16"
11	43045	1	Gate Stop, L. H.
			1 84826 Carr. Bolt, 5/16" x 3/4"
			1 87618 Carr. Bolt, 7/16" x 2"
			1 87362 Plainwasher, 5/16"
			1 80702 Plainwasher, 7/16"
			1 80681 Lockwasher, 5/16"
			1 81547 Lockwasher, 7/16"
			1 84943 Nut, 5/16"
			1 84945 Nut, 7/16"
12	43041	1	End Gate Seal Support
			6 84467 Machine Screw, Truss Hd., 1/4" x 1/2"
			6 80682 Lockwasher, 1/4"
			6 84942 Nut, 1/4"
13	43039	1	Hinge Pin
14	43040	1	End Gate Seal

MODELS 202 & 222 MANURE SPREADER ATTACHMENTS

83397 FLOOR EXTENSION ATTACHMENT

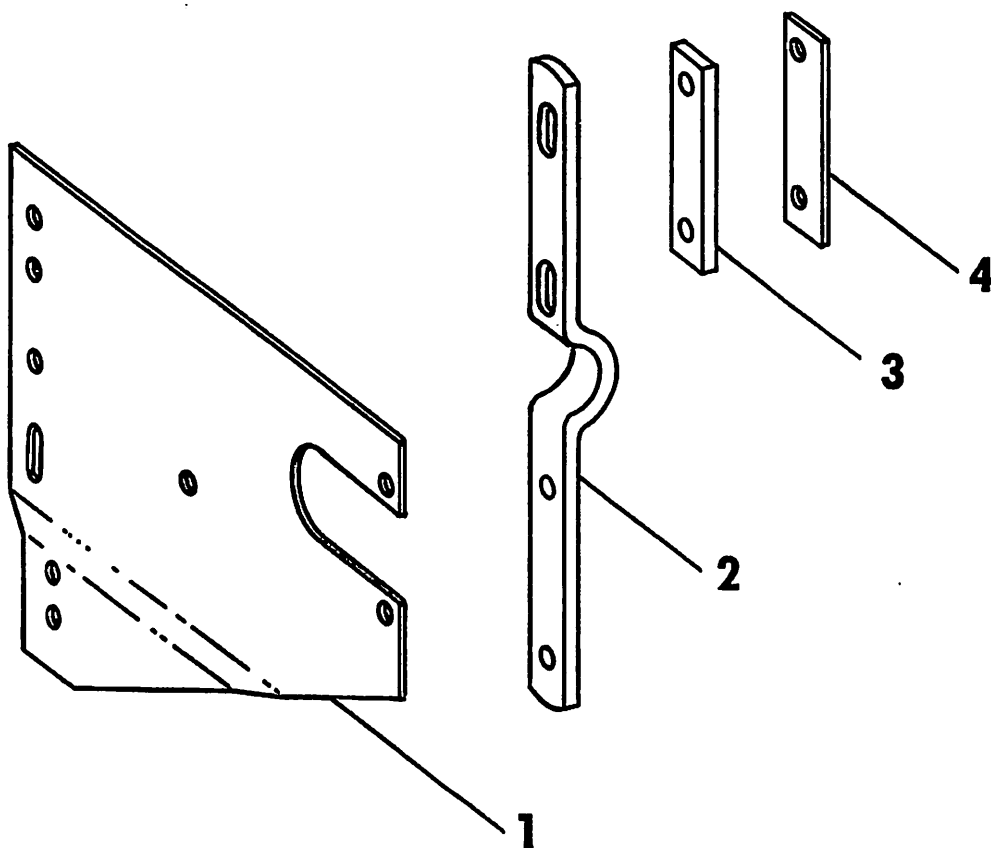


Ref. No.	Part No.	No. Used	Description
1	83397	1	Floor Extension Kit for 202 & 222
1	48949	1	Floor Extension Strip
2	48950	1	Clamp
	7 87828		Plow Bolt #3 Hd. 5/16" x 1 1/2"
	7 87362		Plain Washer 5/16"
	7 84943		Hex Nut 5/16"

MODELS 202 and 222 MANURE SPREADER ATTACHMENTS

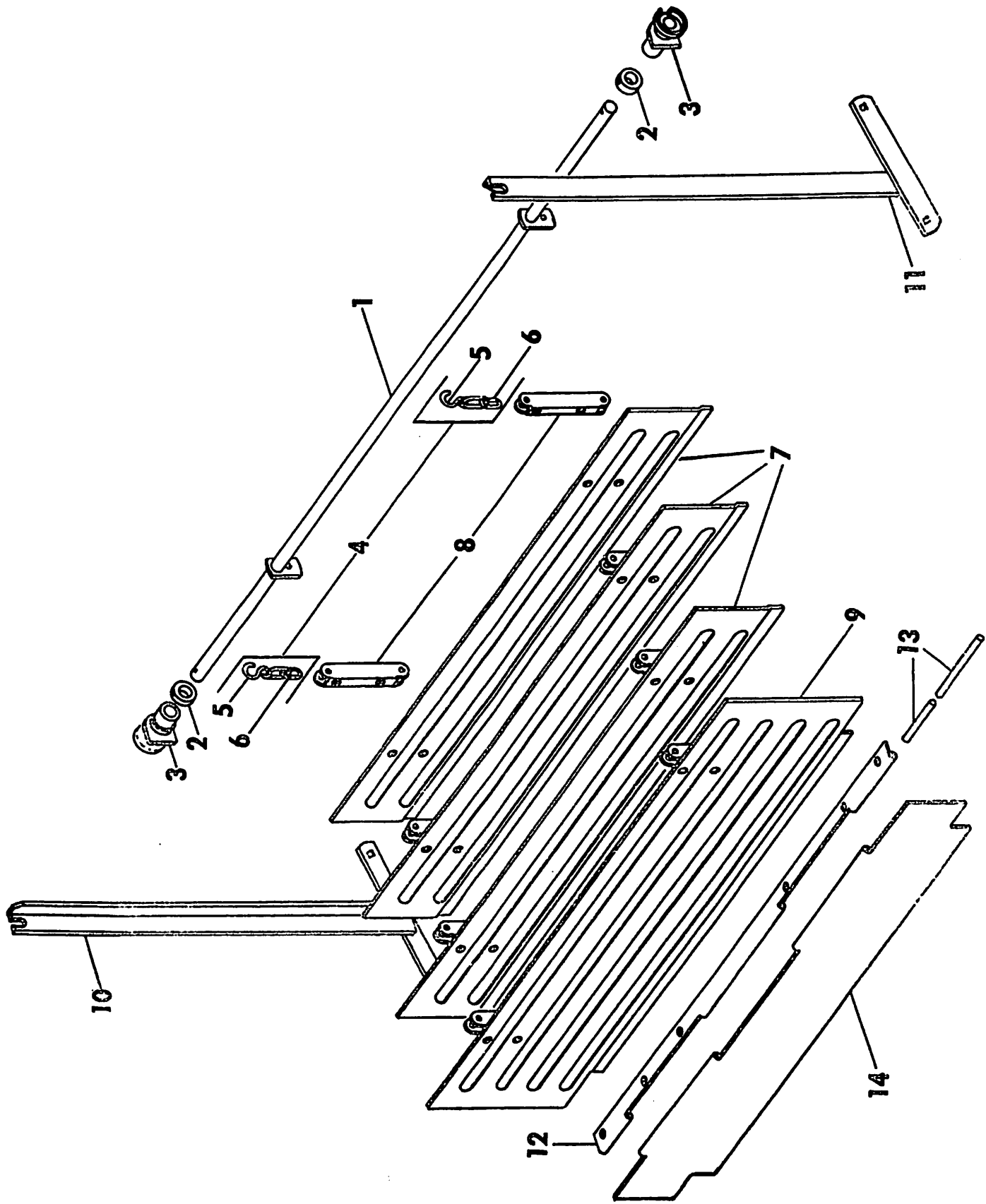
99702 FLUID END GATE BUNDLE

SUPPORTS, L. H.



Ref. No.	Part No.	No. Used	Description
1	43013	1	Mounting Plate, L.H.
		1	87150 Cap Screw 5/16" x 1 1/4"
		1	80681 Lockwasher 5/16"
		1	84943 Nut 5/16"
2	52376	1	Brace, L.H.
		2	84870 Cap Screw 3/8" x 1 1/4"
		2	87494 Carr. Bolt 3/8" x 1 1/4"
		4	80680 Lockwasher 3/8"
		4	84944 Nut 3/8"
3	43016	1	Spacer
4	43015	1	Bearing Stop
		2	87637 Machine Screw, Rnd. Hd. 3/8" x 1 1/4"
		2	80680 Lockwasher 3/8"
		2	84944 Nut 3/8"

MODELS 202 and 222 MANURE SPREADER ATTACHMENTS
99702 FLUID END GATE BUNDLE
SLAT and SEAL GROUP



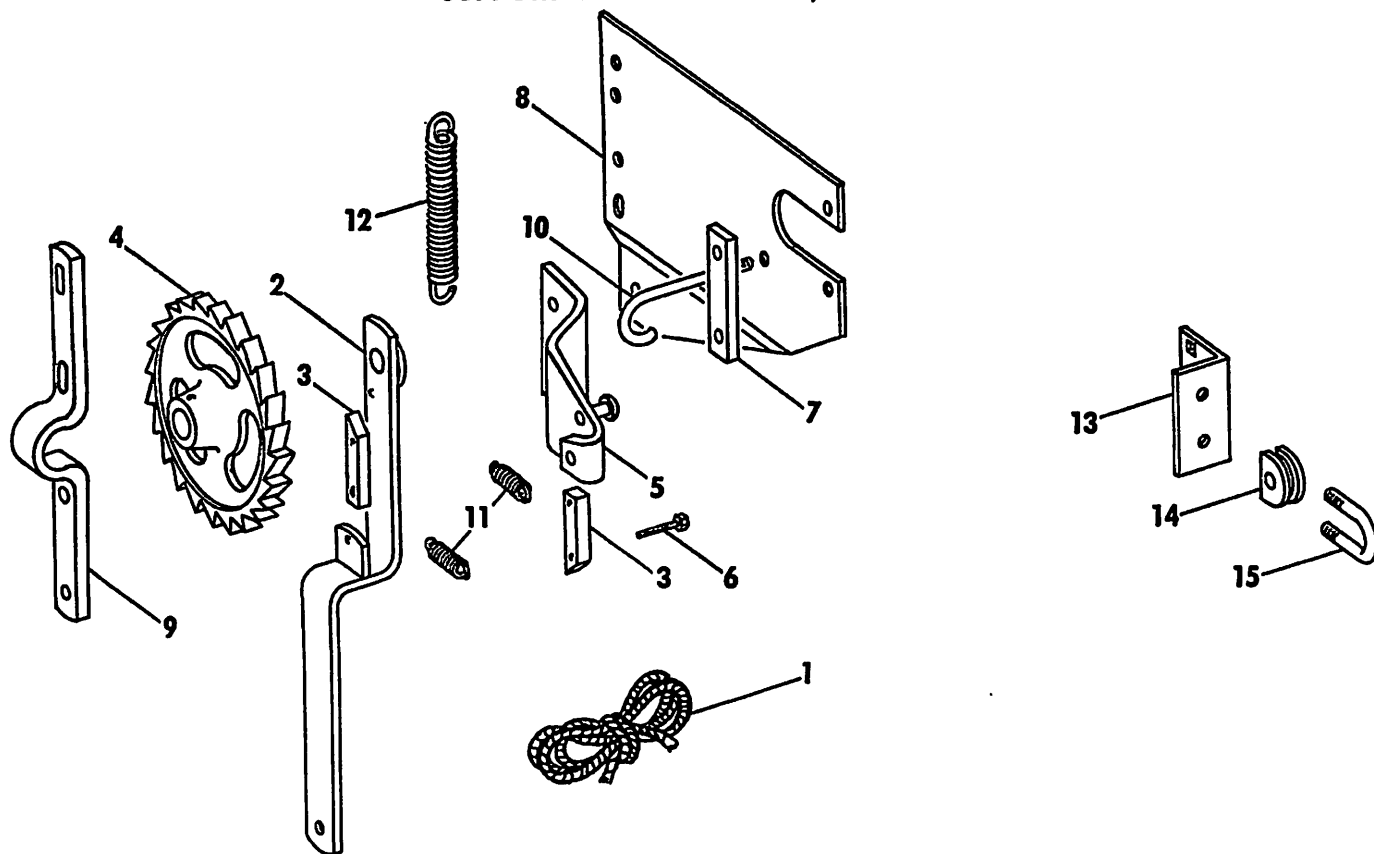
MODELS 202 and 222 MANURE SPREADER ATTACHMENTS

99702 FLUID END GATE BUNDLE

SLAT and SEAL GROUP

Ref. No.	Part No.	No. Used	Description
1	43046	1	Elevating Shaft Weld Assembly
			7 25069 Hinge Shaft Washer
			1 87402 Cotter Pin 1/4" x 1 1/4"
2	35976	2	Set Collar
			4 80425 Hollow Hd. Set Screw 3/8" x 3/8"
3	32497	2	Bearing
			1 80710 Grease Fitting 1/8" Str.
			1 80711 Grease 67 1/2°
4	43179	2	Chain and Hook Assembly
5	34455	2	"S" Hook
6	43018	2	Chain
7	43096	3	Upper Slat W/Link
			8 80351 Cap Screw 5/16"x 1 1/2"
			8 80198 Locknut 5/16"
8	43112	8	Link
			16 80598 Truss Hd. Rivet 1/4" x 3/8"
9	52350 43074	1	Lower Slat W/Link
10	52350	1	Gate Stop Weld Assembly, R.H.
			1 87512 Carr. Bolt 5/16" x 1"
			1 Carr. Bolt 3/8" x 1"
			1 87013 Carr. Bolt 7/16" x 1 1/4"
			1 87362 Plain Washer 5/16"
			1 80702 Plain Washer 7/16"
			1 80681 Lockwasher 5/16"
			1 80680 Lockwasher 3/8"
			1 81547 Lockwasher 7/16"
			1 84943 Nut 5/16"
			1 84944 Nut 3/8"
			1 84945 Nut 7/16"
11	52351	1	Gate Stop Weld Assembly, L.H.
			1 87512 Carr. Bolt 5/16" x 1"
			1 87237 Carr. Bolt 3/8" x 1"
			1 87013 Carr. Bolt 7/16" x 1 1/4"
			1 87362 Plain Washer 5/16"
			1 80702 Plain Washer 7/16"
			1 80681 Lockwasher 5/16"
			1 80680 Lockwasher 3/8"
			1 81547 Lockwasher 7/16"
			1 84944 Nut 5/16"
			1 84943 Nut 3/8"
			1 84945 Nut 7/16"
12	39525	1	End Gate Seal Support
			6 84467 Machine Screw 1/4" x 1/2"
			6 80682 Lockwasher 1/4"
			6 84942 Nut 1/4"
13	39523	1	Hinge Pin
14	39524	1	End Gate Seal

**MODELS 202 and 222 MANURE SPREADER ATTACHMENTS
99702 FLUID END GATE BUNDLE
SUPPORT AND CONTROLS, R. H.**



Ref. No.	Part No.	No. Used	Description
1	43240	1	Control Rope
2	43029	1	Lever Weld Assembly
3	43030	2	Pawl
			1 80453 Cotter Pin 1/4" x 1"
			2 87334 Roll Pin 1/4" x 1 1/4"
			1 80459 Cotter Pin 3/16" x 3/4"
4	43012	1	Ratchet Wheel
			1 87516 Roll 1/4" x 1 5/8"
5	43026	1	Pawl Support Weld Assembly
6	80106	1	Stove Bolt 3/16" x 2"
			2 84850 Sq. Nut 3/16"
7	43016	1	Spacer
			1 87638 Machine Screw, Rnd. Hd. 3/8" x 1 1/2"
			1 87636 Machine Screw, Rnd. Hd. 3/8" x 2 1/2"
			2 80680 Lockwasher 3/8"
			2 84944 Nut 3/8"
8	43014	1	Mounting Plate, R.H.
			1 87401 Cotter Pin 1/4" x 1"
			1 87150 Cap Screw 5/16" x 1 1/4"
			1 80681 Lockwasher 5/16"
			1 84943 Nut 5/16"
9	52375	1	Brace, R.H.
			2 84870 Cap Screw 3/8" x 1 1/4"
			2 87494 Carr. Bolt 3/8" x 1 1/4"
			4 80680 Lockwasher 3/8"
			4 84944 Nut 3/8"
10	43017	1	Stop
			2 87017 Hex Jam Nut 7/16"
11	38669	2	Spring
12	29579	1	Spring
13	43043	1	Insulator Bracket
			1 87512 Carr. Bolt 5/16" x 1"
			1 80681 Lockwasher 5/16"
			1 84943 Nut 5/16"
14	28110	1	Twine Guide
15	28114	1	Twine Guide "U" Bolt
			2 80611 Sq. Nut #10

NUMERICAL PARTS INDEX

Part No.	Ref. No.	Page No.	Part No.	Ref. No.	Page No.	Part No.	Ref. No.	Page No.	Part No.	Ref. No.	Page No.
00673		8	32303	24	6	34046	13	35	35962	16	5
00674		8	32304	8	18	34048	10	36	35963	17	6
00820		24	32305	11	31	34258	16	29	35967	10	22
01081	11	33	32306	14	22	34259	16A	29	35968	7	21
11438		8		3	32	34260	16B	29	35969	1	19
	6	29	32307	8	27	34286	14	15	35970	16	20
13537	19	24		5	37	34366	2	5	35972	14	18
	11	34	32317	4	27	34455	5	43	35973	10	15
13538	5	34	32318	20	15		5	47	35974	13	18
13539	7	34		13	28	34806	7	18	35975	12	20
13540	3	34		20	36		3	37	35976	4	15
13541	8	34	32319	16	22	34810	6	37		2	43
13542		23		2	32	34814	4	37		2	47
	15	34	32320	7	27	34817	7	37	35977	6	15
13548	2	34	32324	10	29	34821	19C	16		14	25
13957	6	34	32329	14	29		12C	28	35982	13	22
13958	4	34	32330	11	29	34880	19	8	35983	6	21
13960	10	34	32351	27	15	35840	5	19	35984	7	23
25069	1	15	32352	25	16	35843	1	21	35985	18	20
		43	32380	10	25	35847	3	21		19	28
		47	32437	3	15	35853	1	5	35986	20	20
25193	31B	16	32443	4	17	35855	4A	5		20	28
	23B	36	32445	12	18	35859	5	5	35987	4	21
	1B	27		8	31	35863	5	15	35991	21	28
25469		40	32451	26	16	35865	15	8	35992	9	21
25523		21	32455	11	15	35868	17	24	35993	8	21
25810	31C	16		7	32	35874	2	19	35994	4	19
	1A	27		12	35	35882	9	20	35997	5	21
	23A	36	32461	27	30	35886	14	20	35998	12	22
25819	1C	27	32464	3	27	35888	13	20	35999	7	19
25823	25	26	32468		29	35892	10	18	36105	22	20
25824	24	26	32469	23	6	35895	2	17	36106		24
25877		16	32471	9	18	35900	11	12	36108		24
25886		25	32474	9	8	35902	16	13			34
26202	11	25	32481	25	30	35904	5	7	36109		24
26335	6	18	32482	17	29	35905	3	7			34
26979	3	25	32483	12	29	35907	4	7	36129	2	37
26981	6	25	32484	12	31	35908	2	7	36130	1	37
26982	2	25	32488	8	8	35910	18	24	36143	3	17
27914	16	24	32497	3	43	35924	6	7	36253		23
28049	9	23		3	47	35925	1	17	36396	4	38
28110	5	31	32562	22	26	35928	7	7	36409	7	15
	14	41	32566	23	26	35930	7	12	36410	8	15
	14	48	32568	21	26	35933	5	11	36411	15	15
28114	6	31	32577	2	27	35937	8	23	36518	6	19
	15	41	32581	6	27	35938	13	24	36519	15	20
	15	48	32583	5	27	35939	10	24		17	20
28723		29	32628	7	8	35941	1	23	36520	11	20
28966	9	29	32646	22	15	35944	3	23	36521	8	19
29139	8	29	32662	9	15	35945	4	23	36523	10	20
29140	13	29	32672	4	29	35946	6	23	36723	6A	34
29141	15	29	32673	2	29	35947	5	23	36726	7A	34
29142	7	29	33017	21	24	35948	11	24	36853	19	26
29538	7	25		13	34	35949	12	24		10	27
29579	3	29	33775	20A	6	35950	15	24	37107	16	33
	12	41	33776	20	6	35951	14	24	37136	15	36
	12	48	33777	27	6	35952	15	5	37192	38	26
29974	12	15	33778	3	5	35956	3	19	37193	37	26
	23	15	33780	25	6	35957	7	5	37314	22	24
32172	26	6	33781	19	6	35958	11	18		14	34
32256	8	25	33784	28	6	35961	8	12	37466	14	33

NUMERICAL PARTS INDEX

Part No.	Ref. No.	Page No.	Part No.	Ref. No.	Page No.	Part No.	Ref. No.	Page No.	Part No.	Ref. No.	Page No.
37702	5	38	40305	5	25	43017	10	40	45695	21	36
37703	6	38	40312	17	15		10	48	45704	14	35
37851	3	38	40313	16	15	43018	6	43	45866	35	26
38260	12A	26	40314	4	25		6	47	46214	7	35
	9A	27	40353	5	32	43026	5	40	46330	1	25
38261	18	26	40354	9	32		5	48	46331	9	25
	9	27	40355	1	31	43029	2	40	46452	28A	26
38321	2	38	40355	14	28		2	48		3B	29
38325	1	38	40357	15	33	43030	3	40	46483	31A	16
38669	11	41	40358	18	28		6	40	46917	7	38
	11	48	40359	1	34		3	48	46918	8	38
38766	19	33	40361	11	27	43039	13	43	46988	12A	15
38767	20	33	40362	15	28	43040	12	43		23A	16
39121	7	31	40363	9	31		14	43	46999	2A	15
39122	2	31	40364	8	32	43042		39	47000	26A	26
39124	3	31	40365	10	31		9	40	47001	36A	26
39159	4	31	40367	10	33	43043	5	35	47003	33A	26
	1	35	40370	13	25		13	41	47004	32A	26
39360	28	26	40371	16	25		13	48	47019	24A	16
39454	26	30	40372	17	26	43044	10	43	47038	22A	16
39523	13	47	40380	16	28	43045	11	11	47057	13	15
		29	40394	24	30	43046	1	43	47062	2	15
39524	14	47	40420	12A	25	43094	1	47	47091	15A	25
39525	12	47	40697	18	33		9	47	47092	16A	25
39749	12	12	40699	20	30	43096	7	47	47116	12	25
39750	13	12	40701	22	30	43101	9	43	47127	20	26
39751	3	11	40702	21	30	43103	7	43	47147	5	5
39752	2	11	40704	17	33	43112	8	43	47148	4	5
39758	2	21	40705	19	30		8	47	47941	31	26
39760	28	16	40727	18	8	43179	4	43	48730	2	23
39761	18	15	40728	17	8		4	47	48731	3	23
39762	16	8	40749	22	13	43240	1	40	48917	19B	16
39763	4	11	40750	21	13		1	48		12B	28
39764	6	11	40936	17	28	43278	22C	20	48919	18	6
39765	10	12	40956	23	30	44036	15	25		29	6
39766	15	12	40957	18	30	44576		34	48947	22	6
39767	9	12	41033	5A	38	44577		34	48949	1	44
39768	14	12	41078	14	31	44606	14	8	48950	2	44
39769	1	11	41228	13	31	44630	6	35	48951	20	8
39770	18	13	41400	21A	26	45319		8	48964	19	15
39779	17	12	41503	30A	26			22		12	28
39784	11	22	42769	20	24			32	48965	19A	16
	1	32	43012	4	40	45557	27	26		12A	28
39792	20	13		4	48	45668	11	35	49074	19D	16
39815	19	13	43013	1	39	45669	9	35	49074	12D	28
39845	15A	22		1	45	45670	8	35	49075	23	46
	6	32	43014	8	40	45673	2	35	49076	18	22
39886	5	18		8	48	45674	18	36		4B	32
39888	31	16	43015	4	39	45676	11	8	49077	22	33
39910	19	36		4	45	45677	10A	15	49078	13	5
40241	22A	20	43016	3	39	45678	24	36	49079	12	5
	21A	28		7	40	45680	16	36	49080	11	5
40242	21B	28		3	45	45681	13A	12	49081	10	5
40254	1	27		7	48	45694	23	36	49082	30	16



Farm Accidents Can Be Prevented With Your Help

No accident prevention program can be successful without the wholehearted co-operation of the person who is directly responsible for the operation of equipment.

To read accident reports from all over the Country is to be convinced that a large number of accidents can be prevented only by the operator anticipating the result before the accident is caused and doing something about it. No power-driven equipment, whether it be transportation or processing, whether it be on the highway, in the harvest field or in the industrial plant, can be safer than the man who is at the controls. If farm accidents are to be prevented—and they can be prevented—it will be done by the operators who accept a full measure of their responsibility.

It is true that the designer, the manufacturer, the safety engineer can help; and they will help, but their combined efforts can be wiped out by a single careless act of the operator.

It is said "that the best kind of a safety device is a careful operator." We ask you to be that kind of an operator.

NATIONAL SAFETY COUNCIL



NEW HOLLAND

'First in Grassland Farming'

NEW HOLLAND, PA.