



SERVICE PARTS CATALOG

MODEL 300 MANURE SPREADER

(REPRINT OF ISSUE 5 - 55)

NEW HOLLAND

"First in Grassland Farming"

ORDERING PARTS

When ordering service parts follow the instructions listed below. By so doing, you will be assured of receiving the correct part in the shortest possible time.

1. Give the model and serial number.
2. Write the complete part number as well as the description of the part.
3. Whenever the terms "left and right, or L and R", are used herein, it should be understood to mean from a position facing in direction of travel.
4. Give detailed shipping instructions, that is: Railroad station, county; whether shipment is to go by parcel post, air express, express, freight or truck.

The New Holland Machine Company is continually striving to improve its products.

We must, therefore, reserve the right to make improvements, or changes, when it becomes practical and possible to do so, without incurring any obligation to make changes, or additions, to the equipment sold previously.

HARDWARE KEY

Throughout this manual you find common hardware, not illustrated, but listed in the description column. The service part immediately preceding a hardware listing is the part using these particular items for mounting purposes. This hardware is not included with the service part or assembly, when ordered as a replacement.

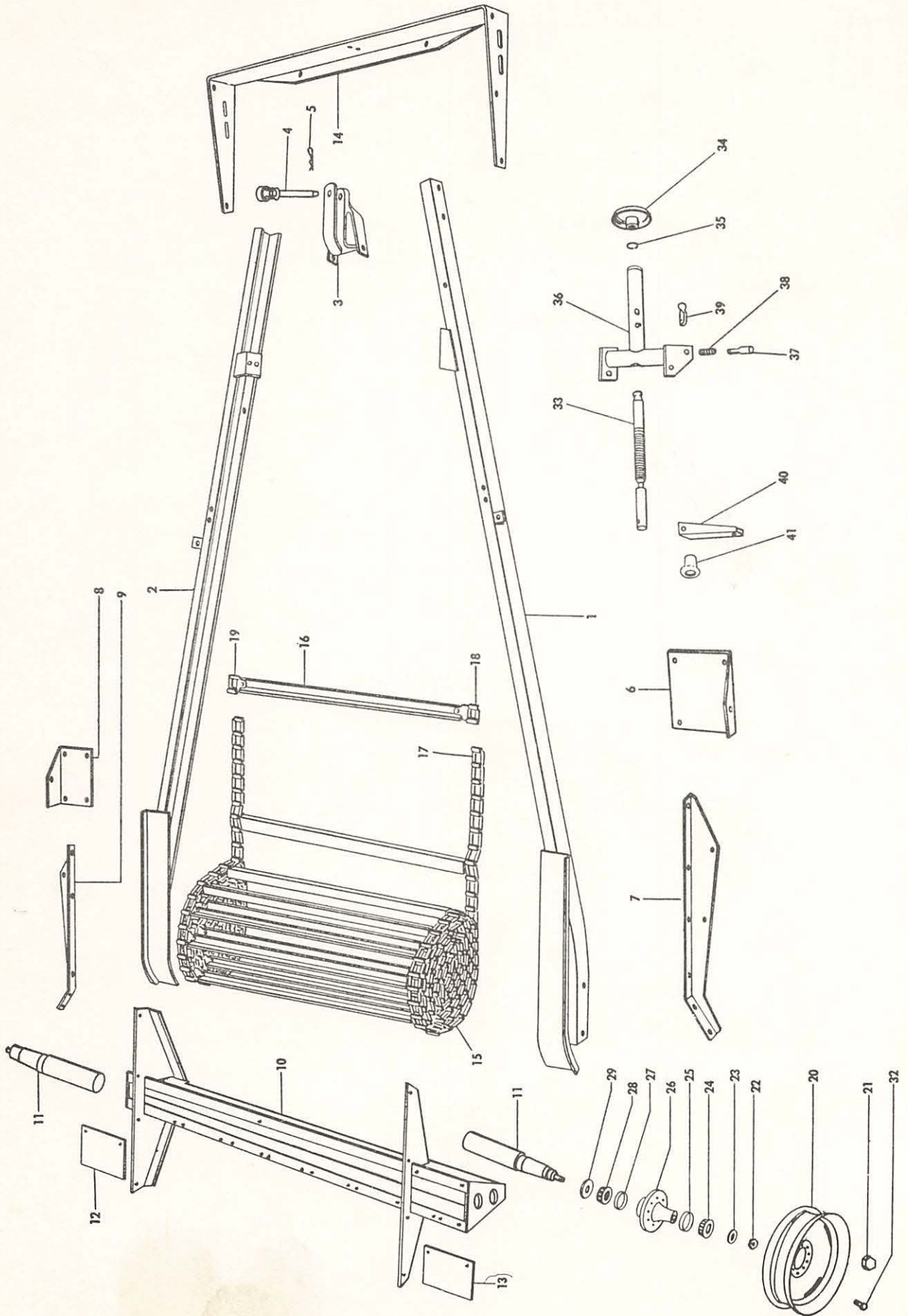
CONTENTS

Assembly	Page
Main Frame, Axle Assembly and Conveyor Chain	5, 6
Bottom Assembly and Conveyor Sprockets & Shafts	7
Side and End Sheet Metal Assembly	9, 10
Beaters, Shafts and Right Hand Drive Assembly	13, 14
Gear Box Control Regulator	15
Power Take Off Assembly and Guards	17
Power Tube Assembly	19
Power Take Off Gear Box Assembly	21
Final Drive Assembly	23
Numerical Parts Index	24, 25

HARDWARE KEY

Throughout this manual you will find common hardware, not illustrated, but listed in the description column. The service part immediately preceding a hardware listing is the part using these particular items for mounting or lubricating purposes. This hardware is not included with the service part or assembly, when ordered as a replacement.

MAIN FRAME, AXLE ASSEMBLY, CONVEYOR CHAIN



MAIN FRAME AXLE ASSEMBLY, CONVEYOR CHAIN

Ref. No.	Part No.	No. Used	Description
1	33764	1	Hitch Frame Assembly, Right
2	33763	1	Hitch Frame Assembly, Left
3	32551	1	Hitch Assembly
		4	80140 Mach. Bolt, Sq. Hd., 1/2" x 1"
		4	80671 Lockwasher, 1/2"
		4	80601 Nut, 1/2"
4	34366	1	Hitch Pin
5	33778	1	Hair Pin Cotter
6	32433	1	Hitch Support, Right
		1	84535 Mach. Bolt, Sq. Hd., 7/16" x 1 1/4"
		1	80140 Mach. Bolt, Sq. Hd., 1/2" x 1"
		1	80157 Mach. Bolt, Sq. Hd., 1/2" x 1 1/4"
		1	84306 Carr. Bolt, 7/16" x 1"
		1	80226 Carr. Bolt, 7/16" x 1 1/4"
		3	80672 Lockwasher, 7/16"
		2	80671 Lockwasher, 1/2"
		3	84931 Nut, 7/16"
		2	80601 Nut, 1/2"
7	32435	1	Side Brace Weldment, Right
		4	84867 Carr. Bolt, 3/8" x 3/4"
		4	80673 Lockwasher, 3/8"
		4	80602 Nut, 3/8"
8	32434	1	Hitch Support, Left
		2	84535 Mach. Bolt, Sq. Hd., 7/16" x 1 1/4"
		1	80140 Mach. Bolt, Sq. Hd., 1/2" x 1"
		1	80157 Mach. Bolt, Sq. Hd., 1/2" x 1 1/4"
		1	84306 Carr. Bolt, 7/16" x 1"
		3	80672 Lockwasher, 7/16"
		2	80671 Lockwasher, 1/2"
		3	84931 Nut, 7/16"
		2	80601 Nut, 1/2"
9	32436	1	Side Brace Weldment, Left
		4	84867 Carr. Bolt, 3/8" x 3/4"
		4	80673 Lockwasher, 3/8"
		4	80602 Nut, 3/8"
10	37379	1	Axle Assembly (See Note on Page 6)
		5	84890 Carr. Bolt, 7/16" x 1"
		14	84664 Step Bolt, 5/16" x 1 1/2"
		5	81547 Lockwasher, 7/16"
		14	80674 Lockwasher, 5/16"
		5	84931 Nut, 7/16"
		14	84851 Nut, 5/16"
11	13733	2	Spindle (See Note on Page 6)
		2	87187 Cap Screw, Hex Hd., 1/2" x 3/4"
		2	80679 Lockwasher, 1/2"
		2	84946 Hex Nut, 1/2"
12	37371	1	Cover, Left (See Note on Page 6)
		2	87138 Cap Screw, Hex Hd., 1/4" x 1/2"
		2	80682 Lockwasher, 1/4"
		2	84942 Nut, 1/4"
13	37370	1	Cover, Right (See Note on Page 6)
		2	87138 Cap Screw, Hex Hd., 1/4" x 1/2"
		2	80682 Lockwasher, 1/4"
		2	84942 Nut, 1/4"
14	33768	1	Hitch Support, Front
		3	80183 Mach. Bolt, Sq. Hd., 3/8" x 3/4"
		2	80157 Mach. Bolt, Sq. Hd., 1/2" x 1 1/4"
		6	84306 Carr. Bolt, 7/16" x 1"
		3	80673 Lockwasher, 3/8"
		2	80671 Lockwasher, 1/2"
		4	80672 Lockwasher, 7/16"
		3	80602 Nut, 3/8"
		2	80601 Nut, 1/2"
		4	84931 Nut, 7/16"

CONTINUED

MAIN FRAME, AXLE ASSEMBLY, CONVEYOR CHAIN (CONT'D.)

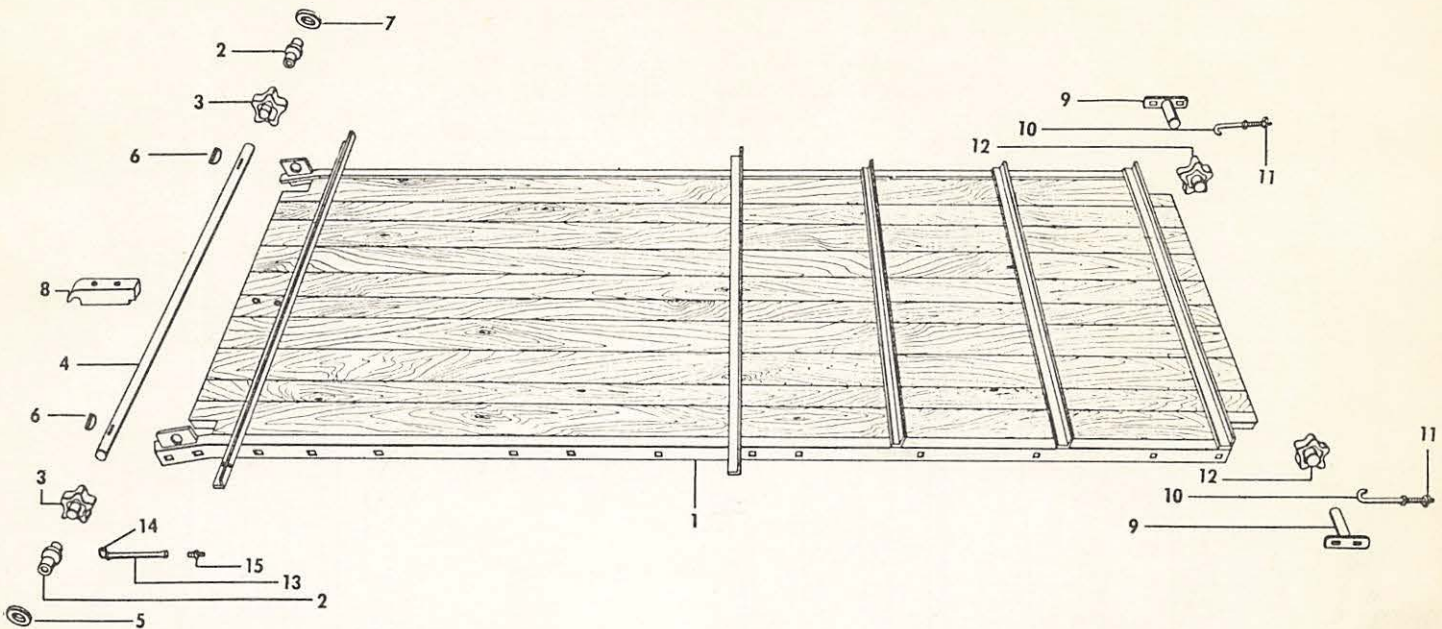
Ref. No.	Part No.	No. Used	Description
15	34887	1	Apron Chain Rivet Assembly (67H Chain)
16	32632	15	Apron Slat less Attaching Links
17	34880	202	Pain Link (for 67H Chain)
17A	32387	202	Plain Link (for 67 Chain)
18	34882	15	Attachment Link, Right (For 67H Chain)
18A	32385	15	Attachment Link, Right (For 67 Chain)
19	34881	15	Attachment Link, Left (For 67H Chain)
19A	32386	15	Attachment Link, Left (For 67 Chain)
			30 80593 Rivet, Rnd. Hd., 5/16" x 5/8"
20	13537	2	Ground Wheel for 7:50 x 24 Implement Tire
20A	33017	2	Ground Wheel w/Side Ring for 7:00 x 20, 7:50 x 20, or 8:00 x 20 Truck Tires (Not Shown)
			2 37314 Side Ring for 33017
21	13960	2	Hub Cap
22	80814	2	Spindle Nut
			2 80740 Cotter Pin, 1/8" x 1 1/4"
23	13541	2	Spindle Washer
24	13539	2	Wheel Bearing Outer
25	13957	2	Outer Bearing Cup
26	25057	2	Hub
27	13958	2	Inner Bearing Cup
28	13540	2	Inner Bearing
29	13548	2	Grease Seal
30	00819	2	Implement Tire 7:50 x 24, 8ply (Not Shown)
31	00820	2	Tube 7:50 x 24 (Not Shown)
32	13542	16	Hub Bolt
	34051	1	Jack Assembly (Includes illustrated parts ref. #28 thru 36)
33	*33775	1	Screw Weld Assembly
33A	**32173	1	Jack Screw & Handle Assembly
34	33777	1	Jack Base Assembly
35	32172	1	Snap Ring
36	*33767	1	Jack Weld Assembly
			2 33784 Split Spacer
			2 84535 Mach. Bolt, Sq. Hd., 7/16" x 1 1/4"
			4 80691 Plain Washer, 7/16"
			2 80672 Lockwasher, 7/16"
			2 84957 Nut, 7/16"
			1 80710 Grease Fitting
36A	**32556	1	Jack Bracket and Tube Assembly
36B	**32466	1	Jack Support Plate, Left
36C	**32465	1	Jack Support Plate, Right
37	32469	1	Pin
			1 80741 Cotter Pin, 1/8" x 1"
38	32303	1	Spring
39	*33780	1	Pin Lever
39A	**32438	1	Washer
40	*33776	1	Handle
			1 80862 Mach. Bolt, Sq. Hd., 3/8" x 1 3/4"
			1 80673 Lockwasher, 3/8"
			1 80624 Nut, 3/8"
41	*33781	1	Knob
			1 84254 Mach. Bolt, Sq. Hd., 3/8" x 2 1/4"
			1 80698 Plain Washer, 3/8"
			1 80624 Nut, 3/8"

* Used on and above serial #1053

** Used on and below serial #1052.

NOTE: On and after serial #5500, the spindles are no longer welded components of the axle assembly. When replacing an axle on machines below serial #4499, order, 1-37379, 1-37370, 2-13733, 1-37371 plus applicable hardware if necessary.

BOTTOM ASSEMBLY, CONVEYOR SPROCKETS & SHAFTS

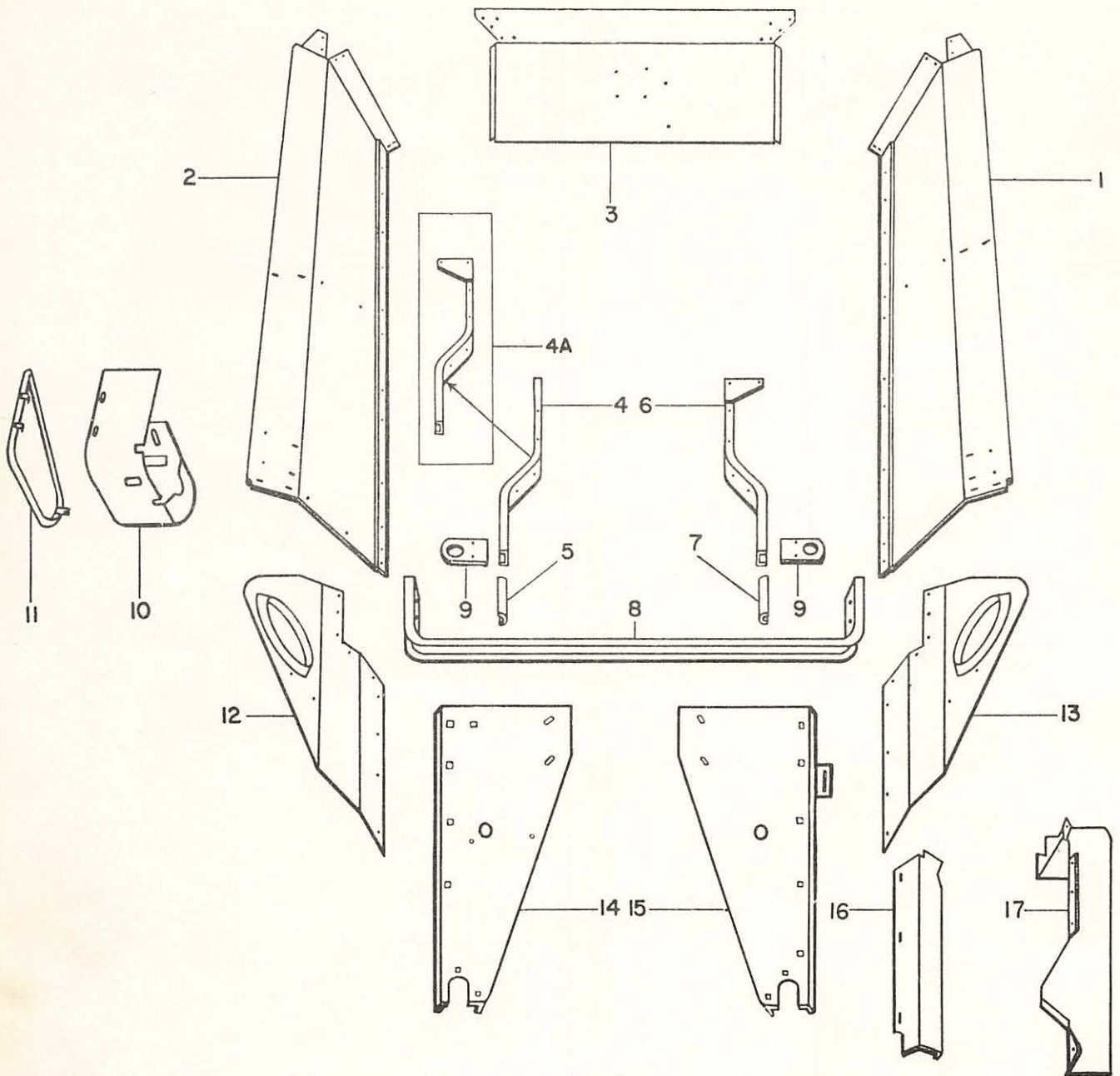


Ref. No.	Part No.	No. Used	Description
1	33782	1	Bed Assembly
2	32489	2	Apron Shaft Bearing
		1	80710 Grease Fitting
3	32487	2	Sprocket Apron Shaft, 5 Tooth
		2	80391 Set Screw, Sq. Hd., 3/8" x 3/4"
		2	84956 Jam Nut, 3/8"
4	32473	1	Apron Drive Shaft
		2	80735 Cotter Pin, 1/4" x 1 1/2"
5	00674	1	Space Washer
6	80765	3	Woodruff Key 1/4" x 1 1/8"
7	00673	1	Washer
8	*33900	1	Bearing Block
		2	84989 Step Bolt 5/16" x 2 3/4"
		2	80693 Plain Washer, 5/16"
		2	80674 Lockwasher, 5/16"
		2	84929 Hex Nut, 5/16"
8A	**32478	1	Bearing Block
9	32628	2	Apron Idler Shaft Assembly
		2	11438 Washer
		4	84306 Carriage Bolt, 7/16" x 1"
		4	80691 Plain Washer, 7/16"
		4	80672 Lockwasher, 7/16"
		4	84931 Nut, 7/16"
		2	80739 Cotter Pin, 3/16" x 1 1/2"
10	32474	2	"J" Bolt
11	84957	4	Jam Nut 7/16"
12	32488	2	Idler Sprocket - 5 Tooth
		2	80714 Grease Fitting
13	84859	1	Pipe Nipple, 1/8" x 6"
14	84383	1	45° Street Elbow
15	84303	1	Grease Fitting

* Used on and above serial number 1053.

** Used on and below serial number 1052.

SIDE AND END SHEET METAL ASSEMBLY



SIDE AND END SHEET METAL ASSEMBLY

Ref. No.	Part No.	No. Used	Description
1	32456	1	Side Sheet, Right 4 84306 Carriage Bolt, 7/16" x 1" 4 80672 Lockwasher, 7/16" 4 84931 Nut, 7/16"
2	32457	1	Side Sheet, Left 3 84306 Carriage Bolt, 7/16" x 1" 3 80672 Lockwasher, 7/16" 3 84931 Nut, 7/16"
3	32458	1	Front End Gate 14 81643 Carriage Bolt 5/16" x 3/4" 14 80674 Lockwasher, 5/16" 14 84851 Nut, 5/16"
4	**32528	1	Arch, Left 5 80327 Hex. Hd. Cap Screw, 3/8" x 1" 4 84867 Carriage Bolt 3/8" x 3/4" 1 84890 Carriage Bolt 7/16" x 1" 9 80680 Lockwasher, 3/8" 1 81547 Lockwasher, 7/16" 9 84471 Nut, 3/8" 1 80287 Nut, 7/16"
4A	***32527	1	Arch Assembly, Left
5	*33681	1	Arch Tie 1 80161 Carriage Bolt 3/8" x 1 1/4" 1 80673 Lockwasher 3/8" 1 80602 Nut, 3/8"
6	**36498	1	Arch Assembly, Right 3 80327 Hex Hd. Cap Screw, 3/8" x 1" 2 87173 Hex Hd. Cap Screw, 7/16" x 1" 4 84867 Carriage Bolt, 3/8" x 3/4" 1 84890 Carriage Bolt 7/16" x 1" 3 81547 Lockwasher, 7/16" 7 80680 Lockwasher, 3/8" 7 84471 Nut, 3/8" 3 84945 Nut, 7/16"
6A	***32523	1	Arch Assembly, Right
7	*33681	1	Arch Tie 1 80161 Carriage Bolt, 3/8" x 1 1/4" 1 80673 Lockwasher, 3/8" 1 80602 Nut, 3/8"
8	32477	1	Arch Center 4 80161 Carriage Bolt, 3/8" x 1 1/4" 4 80673 Lockwasher, 3/8" 4 80602 Nut, 3/8"
9	32437	2	Upper Beater Bearing Holder 1 80161 Carriage Bolt, 3/8" x 1 1/4" 1 84581 Carriage Bolt, 3/8" x 1 1/2" 2 80218 Carriage Bolt 3/8" x 1" 3 80673 Lockwasher, 3/8" 3 80602 Nut, 3/8" 1 80772 Stover Lock Nut, 3/8"
10	32633	1	Apron Drive Guard Assembly 1 84792 Mach. Bolt, Sq. Hd., 5/16" x 3/4" 5 80256 Mach. Screw, Rnd. Hd., 1/4" x 1/2" 1 80664 Plain Washer, 5/16" 1 80681 Lockwasher, 5/16" 5 80675 Lockwasher, 1/4" 1 80801 Wing Nut, 5/16" 5 80603 Nut, 1/4"
11	32638	1	Apron Drive Guard Cover Assembly

*Used above serial number 1053. If replacing either 32523 or 32527 on machines below serial 1052 order applicable number of 33681.

** Used on and above Serial No. 3678.

*** Used on and below Serial No. 3677.

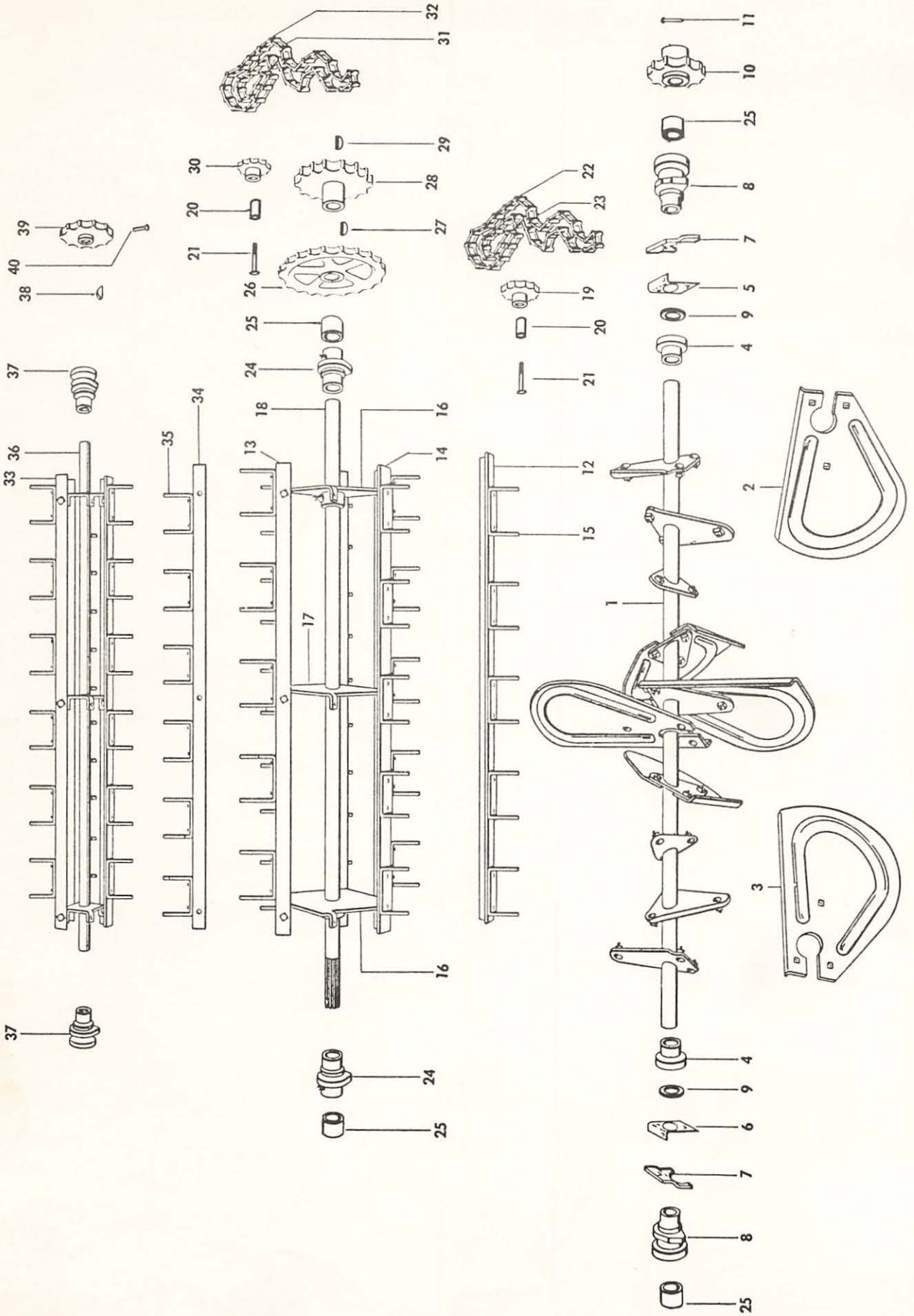
CONTINUED

SIDE AND END SHEET METAL ASSEMBLY (CONT'D)

Ref. No.	Part No.	No. Used	Description
12	32460	1	Upper Beater Shield, Left 3 81643 Carriage Bolt, 5/16" x 3/4" 3 80674 Lockwasher, 5/16" 3 84929 Nut, 5/16"
13	32459	1	Upper Beater Shield, Right 2 81643 Carriage Bolt, 5/16" x 3/4" 2 80674 Lockwasher, 5/16" 2 84929 Nut, 5/16"
14	32535	1	Beater Support Assembly, Left 2 84306 Carriage Bolt, 7/16" x 1" 2 80691 Plain Washer, 7/16" 2 80672 Lockwasher, 7/16" 2 84931 Nut, 7/16"
15	32529	1	Beater Support Assembly, Right 2 84306 Carriage Bolt, 7/16" x 1" 2 80691 Plain Washer, 7/16" 2 80672 Lockwasher, 7/16" 2 84931 Nut, 7/16"
16	32453	1	Widespread Drive Guard 5 81643 Carriage Bolt, 5/16" x 3/4" 5 80674 Lockwasher, 5/16" 5 84929 Nut, 5/16"
17	32452	1	Upper Beater Drive Guard 2 80256 Mach. Screw, Rnd. Hd. 1/4" x 1/2" 4 84622 Carriage Bolt, 1/4" x 1/2" 6 80675 Lockwasher, 1/4" 6 80603 Nut, 1/4"

NOTES

BEATERS, SHAFTS AND RIGHT HAND DRIVE



BEATERS, SHAFTS AND RIGHT HAND DRIVE

Ref. No.	Part No.	No. Used	Description
1	32657	1	Wide Spread Shaft with Hubs 1 80735 Cotter Pin, 1/4" x 1 1/2"
2	32463	5	Wide Spread Paddle, Right 15 84867 Carriage Bolt, 3/8" x 3/4" 15 80673 Lockwasher, 3/8" 15 80602 Nut, 3/8"
3	32462	5	Wide Spread Paddle, Left 15 84867 Carriage Bolt, 3/8" x 3/4" 15 80673 Lockwasher, 3/8" 15 80602 Nut, 3/8"
4	32498	2	Collar 2 80514 Rivet, Rnd. Hd., 1/4" x 2"
5	32351	1	Bearing Support, Right 2 81643 Carriage Bolt, 5/16" x 3/4" 2 80674 Lockwasher, 5/16" 2 84929 Hex Nut, 5/16"
6	32352	1	Bearing Support, Left 2 81643 Carriage Bolt 5/16" x 3/4" 2 80674 Lockwasher, 5/16" 2 84929 Hex Nut, 5/16"
7	32451	2	Bearing Clip 2 81643 Carriage Bolt, 5/16" x 3/4" 2 80674 Lockwasher, 5/16" 2 84929 Hex Nut, 5/16"
8	32646	2	Widespread Bearing Assy. 2 80720 Grease Fitting
9	32455	4	Washer
10	32493	1	Sprocket, 7 Tooth
11	25877	1	Drilled Rivet 1 80742 Cotter Pin, 1/8" x 3/4"
12	32661	2	Main Beater Bar No. 1 (R.H. Tooth 3 1/2" from end of bar)
13	32664	2	Main Beater Bar No. 2 (R.H. Tooth 1/2" from end of bar)
14	32666	2	Main Beater Bar No. 3 (R.H. Tooth 2" from end of bar) 18 80136 Mach. Bolt, Sq. Hd. 3/8" x 1" 18 80673 Lockwasher, 3/8" 18 80602 Nut, 3/8"
15	32662	30	Beater Tooth 60 84378 Rnd. Hd. Rivet, 5/16" x 3/4"
16	*34286	2	Main Beater Head
16A	**32772	2	Main Beater Head 2 80391 Set Screw, Sq. Hd., 3/8" x 3/4" 2 84956 Jam Nut, 3/8" 2 80765 Woodruff Key, 1/4" x 1 1/8"
17	*34284	1	Main Beater Head Assy.
17A	**32770	1	Main Beater Head
18	32649	1	Main Beater Shaft 1 80734 Cotter Pin, 1/4" x 1 3/4"
19	32492	1	Idler Sprocket 6 Tooth 1 80710 Grease Fitting
20	32318	2	Bushing
21	84538	2	Mach. Bolt, Sq. Hd. 7/16" x 3" 6 80691 Plain Washer, 7/16" 2 80672 Lockwasher, 7/16" 2 84931 Nut, 7/16"
22	32310	1	Wide Spread Drive Chain
23	27776	41	Link
24	32644	2	Main Beater Bearing w/Bushing 1 80710 Grease Fitting 1 80869 Grease Fitting
25	29974	8	Bushing

* Used on and above Serial No. 1053.

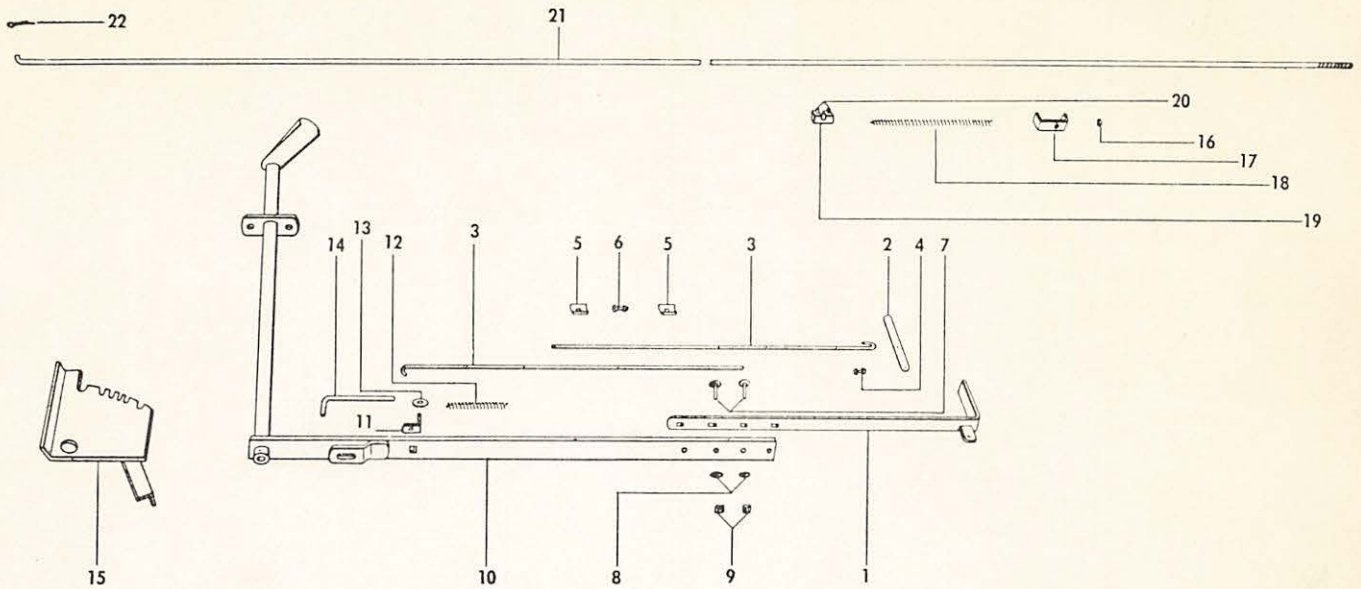
** Used on and below Serial No. 1052.

CONTINUED

BEATERS, SHAFTS AND RIGHT HAND DRIVE (CONT'D.)

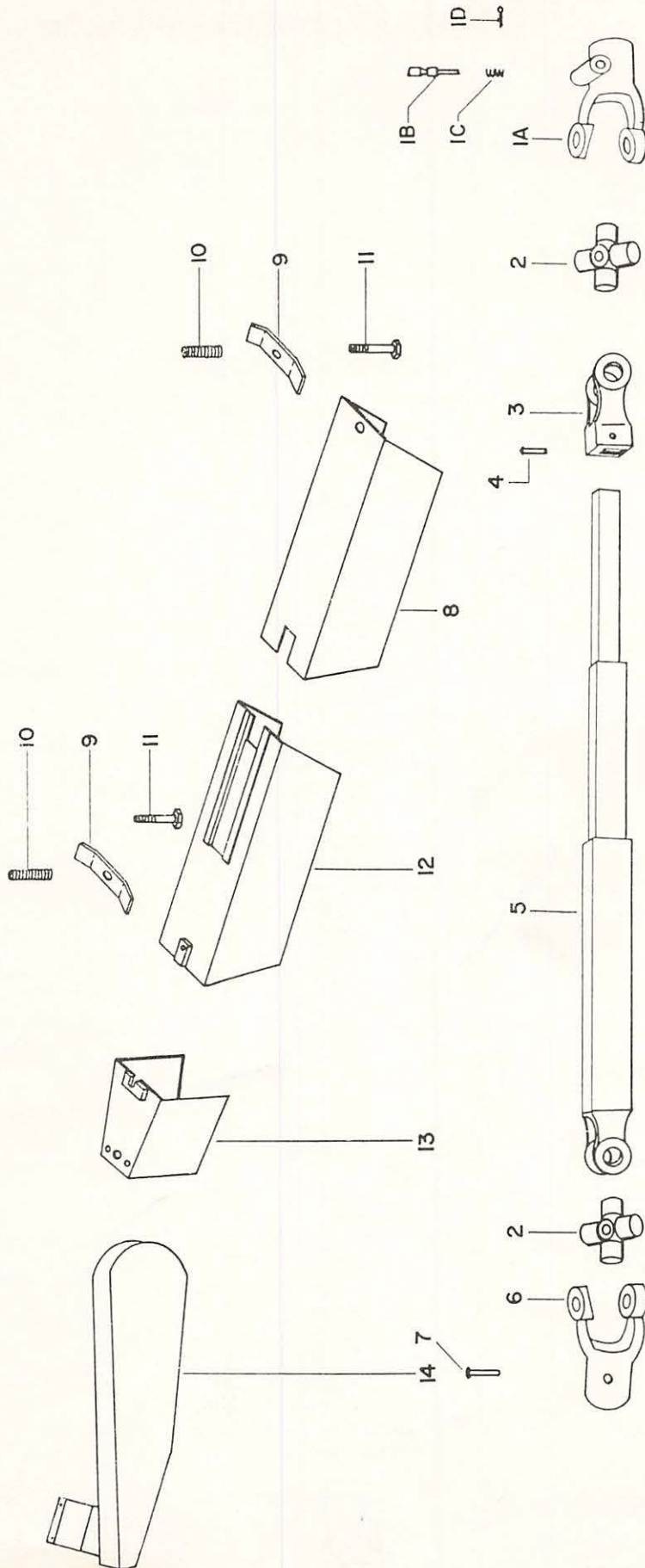
Ref. No.	Part No.	No. Used	Description
26	32650	1	Sprocket, 20 Tooth 1 80399 Set Screw, Sq. Hd., Cup Pt. 1/2" x 1/4" 1 80643 Hex Jam Nut, 1/2"
27	84848	1	Woodruff Key 1/4" x 2 1/8"
28	32771	1	Sprocket — 13 Tooth 1 80391 Set Screw, Sq. Hd. 3/8" x 3/4" 1 84956 Jam Nut, 3/8"
29	80765	1	Woodruff Key 1/4" x 1 1/8"
30	32495	1	Idler, Sprocket 6 Tooth 1 80710 Grease Fitting
31	32311	1	Upper Beater Drive Chain
32	124070	38	Link
33	32668	2	Upper Beater Bar No. 1 (R.H. Tooth 1 1/8" from end of bar)
34	32670	2	Upper Beater Bar No. 2 (R.H. Tooth 3 1/2" from end of bar) 12 80136 Mach. Bolt, Sq. Hd. 3/8" x 1" 12 80673 Lockwasher, 3/8" 12 80602 Nut, 3/8"
35	32662	24	Beater Tooth 48 84378 Rnd. Hd. Rivet, 5/16" x 3/4"
36	32654	1	Upper Beater Shaft Assembly 1 80751 Cotter Pin, 1/4" x 1 1/4"
37	32497	2	Upper Beater Bearing 1 80710 Grease Fitting 1 80720 Grease Fitting
37A	25069	2	Washer (Not Shown)
38	84322	1	Woodruff Key
39	32496	1	Upper Beater Sprocket, 10 Tooth
40	84069	1	Cotter Pin 1/4" x 2 1/4"

GEAR BOX CONTROL REGULATOR



Ref. No.	Part No.	No. Used	Description
1	32594	1	Feed Lever Extension Assembly
2	32443	1	Quadrant Lift Lock Lever
3	32470	2	Quadrant Lock Wire
4	80373	1	Mach. Screw, Rnd. Hd. $\frac{1}{4}$ " x $\frac{5}{8}$ "
5	26335	4	Clamp
6	80218	2	Carriage Bolt $\frac{3}{8}$ " x 1"
7	80218	2	Carriage Bolt $\frac{3}{8}$ " x 1"
8	80673	2	Lockwasher $\frac{3}{8}$ "
9	80602	2	Nut $\frac{3}{8}$ "
10	32597	1	Feed Lever Assembly (Does not include 34806 Guide)
			2 80183 Mach. Bolt, Sq. $\frac{3}{8}$ " x $\frac{3}{4}$ "
			2 80673 Lockwasher, $\frac{3}{8}$ "
			2 80602 Nut, $\frac{3}{8}$ "
			1 80691 Plain Washer, $\frac{7}{16}$ "
			1 80742 Cotter Pin, $\frac{1}{8}$ " x $\frac{3}{4}$ "
			1 80737 Cotter Pin, $\frac{3}{16}$ " x $1\frac{1}{2}$ "
11	34806	1	Control Rod Guide
			1 84867 Carriage Bolt, $\frac{3}{8}$ " x $\frac{3}{4}$ "
			1 80673 Lockwasher, $\frac{3}{8}$ "
			1 84930 Nut, $\frac{3}{8}$ "
12	32304	1	Spring
13	80692	2	Plain Washer $\frac{3}{8}$ "
14	32471	1	Quadrant Lock Rod
			2 80742 Cotter Pin, $\frac{1}{8}$ " x $\frac{3}{4}$ "
15	34257	1	Quadrant
			2 80183 Mach. Bolt, Sq. Hd. $\frac{3}{8}$ " x $\frac{3}{4}$ "
			2 81643 Carriage Bolt, $\frac{5}{16}$ " x $\frac{3}{4}$ "
			2 80673 Lockwasher, $\frac{3}{8}$ "
			2 80674 Lockwasher, $\frac{5}{16}$ "
			2 80602 Nut, $\frac{3}{8}$ "
			2 84851 Nut, $\frac{5}{16}$ "
16	80790	1	Stover Lock Nut $\frac{7}{16}$ "
17	32445	1	Feed Arm Clip
18	32305	1	Spring
19	32484	1	Control Rod Set Collar
20	80389	2	Set Screw, Sq. Hd. $\frac{5}{16}$ " x $\frac{1}{2}$ "
21	32472	1	Control Rod
22	80742	1	Cotter Pin $\frac{1}{8}$ " x $\frac{3}{4}$ "

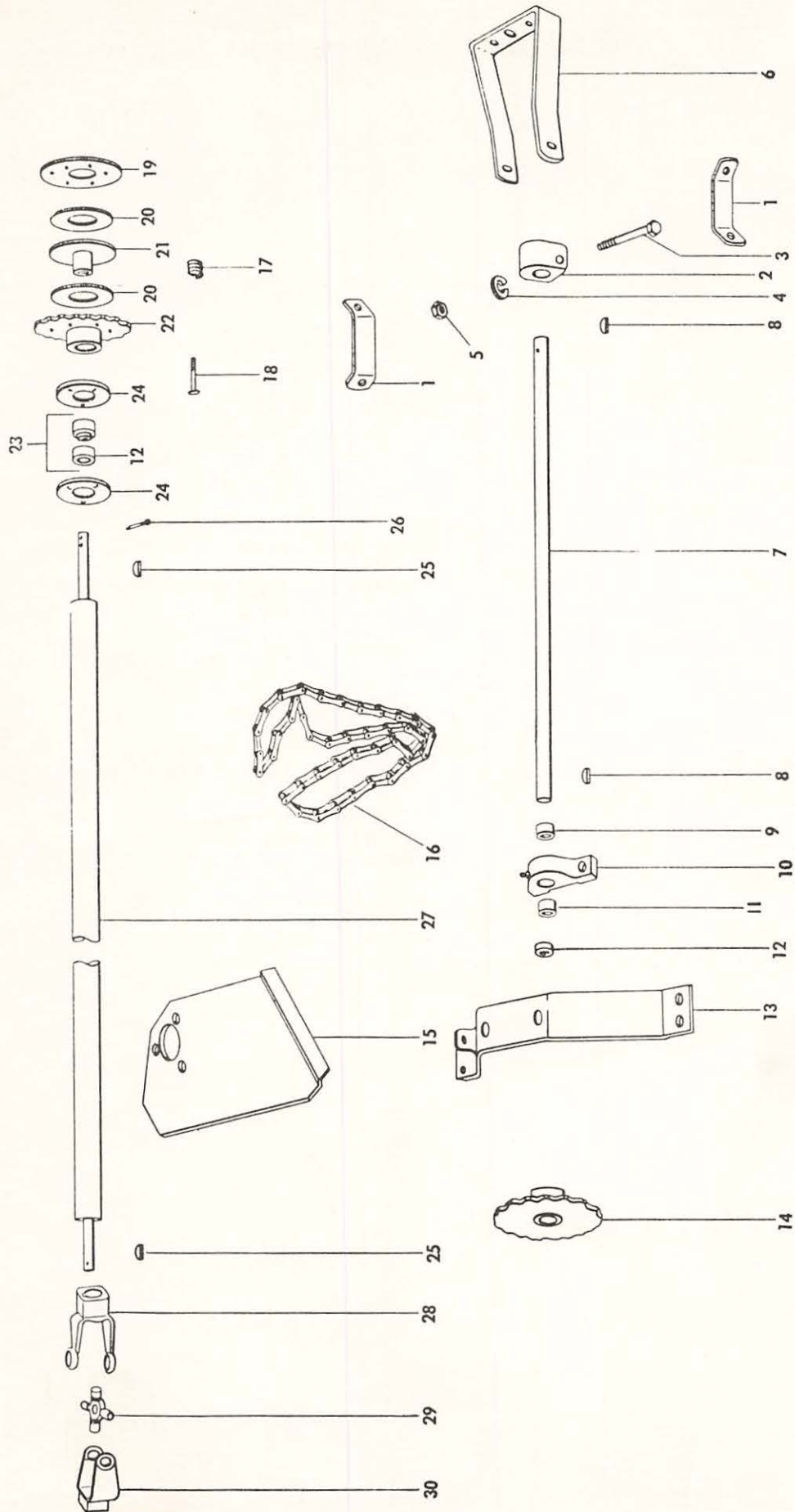
POWER TAKE OFF ASSEMBLY & GUARDS



POWER TAKE OFF ASSEMBLY & GUARDS

Ref. No.	Part No.	No. Used	Description
	32327	1	P.T.O. Assembly Complete (Inc. Ref. Nos. 1 thru 7)
1	26982	1	Quick Detachable Yoke Assy. (Inc. 1A, 1B, 1C, and 1D)
1A	26979	1	Quick Detachable Yoke 1 $\frac{3}{8}$ " Spline
1B	26980	1	Pin
1C	26981	1	Spring
1D	80746	1	Cotter Pin $\frac{1}{8}$ " x $\frac{1}{2}$ "
2	29538	2	Spider & Bearing Assembly 2 80719 Grease Fitting
3	32256	1	Front Yoke
4	80536	1	Rnd. Hd. Rivet 5/16" x 2"
5	32257	1	P.T.O. Tube Assembly
6	32380	1	Yoke
7	84362	1	Mach. Bolt, Sq. Hd. 5/16" x 2 $\frac{1}{2}$ " 1 80674 Lockwasher, 5/16" 1 84851 Sq. Nut, 5/16"
8	32566	1	Outside Telescoping Guard Assembly
9	25824	2	P.T.O. Guard Clip
10	25823	2	Spring
11	87167	2	Hex Hd. Cap Screw, $\frac{3}{8}$ " x 3" 2 80702 Plain Washer, $\frac{3}{8}$ " 2 84944 Nut, $\frac{3}{8}$ "
12	32562	1	Inside Telescoping Guard Assy.
13	32568	1	P.T.O. Guard Assembly 2 80183 Mach. Bolt, Sq. Hd., $\frac{3}{8}$ " x $\frac{3}{4}$ " 2 80673 Lockwasher, $\frac{3}{8}$ " 2 80602 Nut, $\frac{3}{8}$ "
14	32577	1	Chain Guard Assembly 2 80256 Mach. Screw, Rnd. Hd., $\frac{1}{4}$ " x $\frac{1}{2}$ " 2 81643 Carriage Bolt, 5/16" x $\frac{3}{4}$ " 2 80675 Lockwasher, $\frac{1}{4}$ " 2 80674 Lockwasher, 5/16" 2 80603 Nut, $\frac{1}{4}$ " 2 84851 Nut, 5/16"

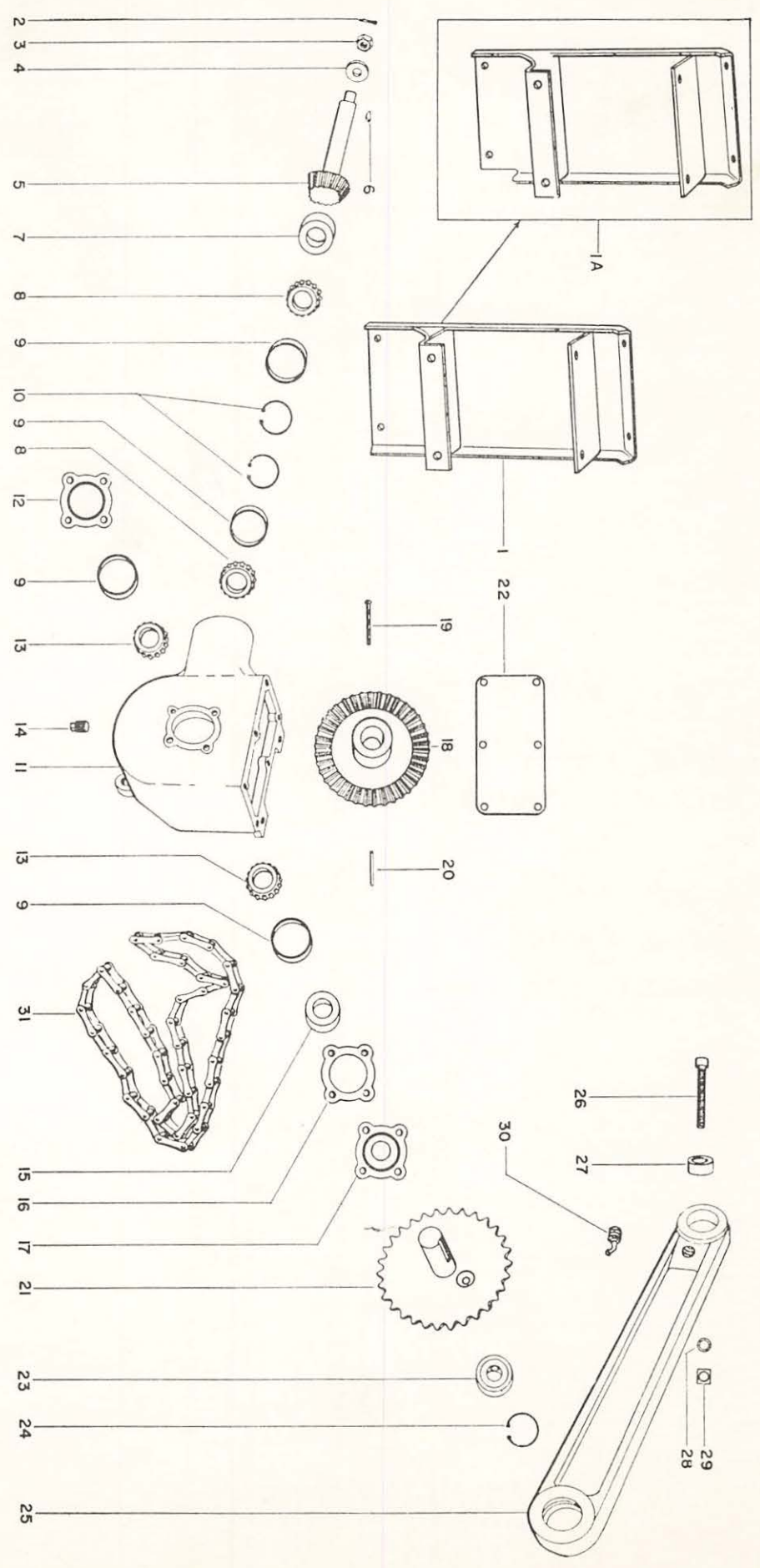
POWER TUBE ASSEMBLY



POWER TUBE ASSEMBLY

Ref. No.	Part No.	No. Used	Description
1	32467	2	Support Arm 2 80157 Mach. Bolt, Sq. Hd., 1/2" x 1 1/4" 2 80671 Lockwasher, 1/2" 2 80601 Nut, 1/2"
2	32996	1	Tipping Brg. Assembly 1 80710 Grease Fitting
3	84701	1	Mach. Bolt, Sq. Hd., 1/2" x 3 3/4"
4	80671	1	Lockwasher 1/2"
5	80601	1	Nut 1/2"
6	32439	1	P.T.O. Guard Support
7	32576	1	Jackshaft
8	80768	2	Woodruff Key 1/4" x 1"
9	32103	1	Set Collar
10	13373	1	Pillow Block Bearing
11	33695	1	Washer (Used only with Link Belt Pressed Steel Housing) 2 84018 Mach. Bolt, Sq. Hd., 3/8" x 1 1/2" 4 80692 Plain Washer, 3/8" 2 80673 Lockwasher, 3/8" 2 80602 Nut, 3/8"
12	32255	AR	Locking Collar (For Fafnir 13373 and 36854) 1 80430 Socket Hd. Cup Pt. Set Screw, 1/4"-20 x 1/4"
12A	33124	AR	Locking Collar (For Link Belt 13373) 2 87324 Socket Hd. Knurled Pt. Set Screw, #10-24 x 3/8"
13	32571	1	Bearing Support Assembly 4 80157 Mach. Bolt, Sq. Hd., 1/2" x 1 1/4" 4 80671 Lockwasher, 1/2" 4 80601 Nut, 1/2"
13A	32500	1	Special Bolt (Not Shown) 2 84956 Jam Nut, 3/8"
14	32480	1	Sprocket, 15 Tooth 1 80435 Set Screw, Hollow Hd., 3/8" x 3/4" 1 84956 Jam Nut, 3/8"
15	32440	1	Shaft Support Plate 4 80183 Mach. Bolt, Sq. Hd., 3/8" x 3/4" 2 81643 Carriage Bolt, 5/16" x 3/4" 4 80673 Lockwasher, 3/8" 2 80674 Lockwasher, 5/16" 4 80602 Nut, 3/8" 2 84851 Nut, 5/16"
16	32314	1	Gear Box Drive Chain RC 2050
16A	25193	1	Coupler Link RC 2050
16B	25819	1	Offset Link RC 2050
16C	25810	57	Roller Link RC 2050
17	32307	6	Spring
18	84926	6	Cap Screw, Hex Hd. 3/8" x 2 1/4" 6 84294 Plain Washer, 3/8"
19	32464	1	Clutch Plate
20	32317	2	Friction Disc
21	32583	1	Clutch Flange Assy.
22	32581	1	Clutch Sprocket w/Bushing
22A	32320	1	Bushing (Not Shown)
23	36854	1	Flangette Bearing w/Locking Collar 1 80430 Set Screw, Cup Pt. 1/4" x 1/4"
24	36853	2	Flangette 3 84826 Carriage Bolt, 5/16" x 3/4" 3 80681 Lockwasher, 5/16" 3 80269 Nut, 5/16"
25	80768	2	Woodruff Key 1/4" x 1"
26	80735	1	Cotter Pin 1/4" x 1 1/2"
27	32586	1	Propeller Tube Assembly
28	32673	1	Front Yoke
29	29538	1	Spider & Bearing Assembly 1 80711 Grease Fitting
30	32672	1	Rear Yoke

P. T. O. GEAR BOX ASSEMBLY



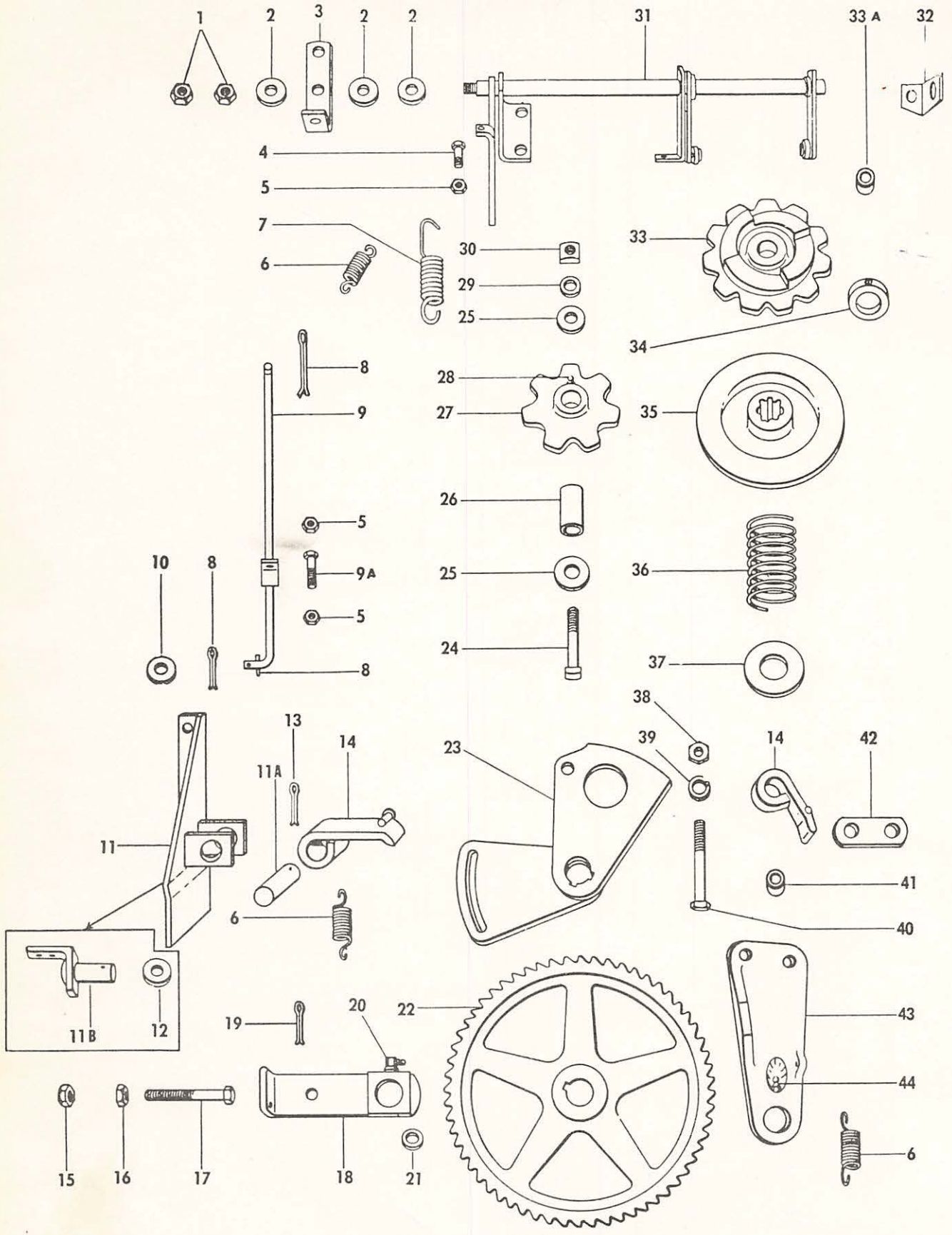
P. T. O. GEAR BOX ASSEMBLY

Ref. No.	Part No.	No. Used	Description
1	*36500	1	Gear Box Mount Assembly 2 80136 Mach. Bolt, Sq. Hd., 3/8" x 1" 2 84867 Carriage Bolt, 3/8" x 3/4" 2 84306 Carriage Bolt, 7/16" x 1" 4 80673 Lockwasher, 3/8" 2 80672 Lockwasher, 7/16" 2 80624 Hex Nut, 3/8" 2 80602 Sq. Nut, 3/8" 2 84931 Sq. Nut, 7/16"
1A	**32540	1	Gear Box Mount Assembly
2	80750	1	Cotter Pin 1/8" x 1 1/4"
3	116311	1	Special Hex Nut
4	11438	1	Washer
5	32330	1	Bevel Pinion & Shaft
6	80765	1	Woodruff Key
7	29142	1	Oil Seal
8	29139	2	Tapered Roller Bearing Cone
9	28966	4	Tapered Roller Bearing Cup
10	32324	2	Snap Ring
11	32481	1	Gear Box Case 4 80143 Mach. Bolt, Sq. Hd., 1/2" x 1 1/2" 4 80671 Lockwasher, 1/2" 4 80601 Sq. Nut, 1/2"
12	32483	1	Bearing Cap 4 84260 Cap Screw, 5/16" x 7/8" 4 80674 Lockwasher, 5/16"
13	29140	2	Tapered Roller Bearing Cone
14	84296	1	Pipe Plug 1/2" Std.
15	29141	1	Oil Seal
16	32326	AR	Shim Set
17	32482	1	Seal Closure 4 84260 Cap Screw, 5/16" x 7/8" 4 80674 Lockwasher, 5/16"
18	32329	1	Bevel Gear
19	28723	1	Drilled Rivet 1 80661 Cotter Pin, 1/8" x 5/8"
20	32468	1	Key
21	32590	1	Gearbox Sprocket and Stud Assembly 1 80696 Plain Washer, 1/2" 1 80856 Light Slotted Hex Nut, 1/2" 1 80740 Cotter Pin, 1/8" x 1 1/2"
22	32461	1	Gearbox Cover 6 80353 Cap Screw, 5/16" x 1/2" 6 80674 Lockwasher, 5/16"
23	27291	1	Bearing
24	27754	1	Snap Ring
25	32499	1	Crank Arm
26	80967	1	Cap Screw, Hex Hd. 1/2" x 3 1/2"
27	32319	1	Bushing
28	80671	1	Lockwasher 1/2"
29	80622	1	Nut 1/2"
30	80710	1	Grease Fitting
31	37309	1	Main Beater Drive Chain (AR 1500 Agricultural Implt. Chain)
31A	25811	41	Roller Link For R.C. 2060 Roller Chain
31B	25814	1	Coupler Link For R.C. 2060 Roller Chain
31B	37310	1	Coupler Link For AR 1500
31C	25820	1	Offset Link For R.C. 2060 Roller Chain
31C	37311	1	Offset Link For AR 1500

* Used on and above Serial No. 3678.

** Used on and below Serial No. 3677.

FINAL DRIVE ASSEMBLY



FINAL DRIVE ASSEMBLY

Ref. No.	Part No.	No. Used	Description
1	80643	2	Jam Nut 1/2"
2	80696	3	Plain Washer 1/2"
3	32447	1	Beater Clutch Lever
4	84727	1	Mach. Bolt, Hex Hd. 5/16" x 1"
5	80647	3	Hex Jam Nut 5/16"
6	32306	3	Spring
7	32308	1	Spring
8	80742	3	Cotter Pin 1/8" x 3/4"
9	32611	1	Control Arm Assy.
9A	34097	1	Special Bolt
10	80698	2	Plain Washer 3/8"
11	*36496	1	Arch Gusset Weld Assembly 1 84980 Carriage Bolt, 7/16" x 1" 2 87173 Hex Hd. Cap Screw, 7/16" x 1" 3 80672 Lockwasher, 7/16" 3 84945 Nut, 7/16"
11A	*32624	1	Pin
11B	**32622	1	Holding Dog Support Assy. 1 84534 Mach. Bolt, Sq. Hd., 7/16" x 1" 1 80672 Lockwasher, 7/16" 1 84931 Sq. Nut, 7/16"
12	**11438	1	Washer
13	80741	1	Cotter Pin 1/8" x 1"
14	32605	2	Pawl Assembly - <i>New # 132368</i>
15	84957	1	Hex Nut 7/16"
16	80652	2	Jam Nut 7/16"
17	34098	1	Special Bolt
18	32625	1	Apron Outboard Bearing Assembly
19	80459	1	Cotter Pin 3/16" x 3/4"
20	80711	1	Grease Fitting
21	00673	1	Space Washer
22	32486	1	Ratchet Wheel
23	32607	1	Pawl Guide Assy.
24	84538	1	Mach. Bolt, Sq. Hd. 7/16" x 3"
25	80691	3	Plain Washer 7/16"
26	32318	1	Bushing
27	32490	1	Idler Sprocket - 7 Tooth
28	80714	1	Grease Fitting
29	80672	1	Lockwasher 7/16"
30	84931	1	Sq. Nut 7/16"
31	32613	1	Clutch Rod Assy. 3 81643 Carriage Bolt, 5/16" x 3/4" 3 80674 Lockwasher, 5/16" 3 84851 Sq. Nut, 5/16"
32	32619	1	Rod Support, Rear 1 81643 Carriage Bolt, 5/16" x 3/4" 1 80674 Lockwasher, 5/16" 1 84851 Sq. Nut, 5/16"
33	32642	1	Throwout Clutch Driver, w/Bushings 1 80869 Grease Fitting
33A	32768	2	Bushing
34	32475	1	Collar 2 84382 Set Screw, Hollow Hd., Dog Pt. 5/16" x 5/8"
35	32491	1	Throwout Clutch, Driven
36	32769	1	Spring
37	32449	1	Washer
38	80622	1	Hex Nut 1/2"
39	80671	1	Lockwasher 1/2"
40	80967	1	Cap Screw, Hex Hd. 1/2" x 3 1/2"
41	32319	1	Bushing
42	32446	1	Pawl Link
43	32485	1	Pawl Support
44	80710	1	Grease Fitting

* Used on and above Serial No. 3678.

** Used on and below Serial No. 3677.

NUMERICAL PARTS INDEX

Part No.	Ref. No.	Page No.	Part No.	Ref. No.	Page No.	Part No.	Ref. No.	Page No.	Part No.	Ref. No.	Page No.
00673	7	7	32311	31	14	32481	11	21		35	14
	21	23	32314	16	19	32482	17	21	32664	13	13
00674	5	7	32317	20	19	32483	12	21	32666	14	13
00819	30	6	32318	20	13	32484	19	15	32668	33	14
00820	31	6		26	23	32485	43	23	32670	34	14
11438	4	21	32319	27	21	32486	22	23	32672	30	19
	12	23		41	23	32487	3	7	32673	28	19
13373	10	19	32320	22A	19	32488	12	7	32768	33A	23
13537	20	6	32324	10	21	32489	2	7	32769	36	23
13539	24	6	32326	16	21	32490	27	23	32770	17A	13
13540	28	6	32327		17	32491	35	23	32771	28	14
13541	23	6	32329	18	21	32492	19	13	32772	16A	13
13542	32	6	32330	5	21	32493	10	13	32996	2	19
13548	29	6	32351	5	13	32495	30	14	33017	20A	6
13733	11	5	32352	6	13	32496	39	14	33124	12A	19
13957	25	6	32380	6	17	32497	37	14	33681	5	9
13958	27	6	32385	18A	6	32498	4	13		7	9
13960	21	6	32386	19A	6	32499	25	21	33695	11	19
25057	26	6	32387	17A	6	32500	13A	19	33763	2	5
25069	37A	14	32433	6	5	32523	6A	9	33764	1	5
25193	16A	19	32434	8	5	32527	4A	9	33767	36	6
25810	16C	19	32435	7	5	32529	15	10	33768	14	5
25811	31A	21	32436	9	5	32535	14	10	33775	33	6
25814	31B	21	32437	9	9	32540	1A	21	33776	40	6
25819	16B	19	32438	39A	6	32551	3	5	33777	34	6
25820	31C	21	32439	6	19	32556	36A	6	33778	5	5
25823	10	17	32440	15	19	32562	12	17	33780	39	6
25824	9	17	32443	2	15	32566	8	17	33781	41	6
25877	11	13	32445	17	15	32568	13	17	33782	1	7
26335	5	15	32446	42	23	32571	13	19	33784		6
26979	1A	17	32447	3	23	32576	7	19	33900	8	7
26980	1B	17	32449	37	23	32577	14	17	34051		6
26981	1C	17	32451	7	13	32581	22	19	34097	9A	23
26982	1	17	32452	17	10	32583	21	19	34098	17	23
27291	23	21	32453	16	10	32586	27	19	34257	15	15
27754	24	21	32455	9	13	32590	21	21	34284	17	13
27776	23	13	32456	1	9	32594	1	15	34286	16	13
28723	19	21	32457	2	9	32597	10	15	34366	4	5
28966	9	21	32458	3	9	32605	14	23	34806	11	15
29139	8	21	32459	13	10	32607	23	23	34880	17	6
29140	13	21	32460	12	10	32611	9	23	34881	19	6
29141	15	21	32461	22	21	32613	31	23	34882	18	6
29142	7	21	32462	3	13	32619	32	23	34887	15	6
29538	2	17	32463	2	13	32622	11B	23	36496	11	23
	29	19	32464	19	19	32624	11A	23	36498	6	9
29974	25	13	32465	36C	6	32625	18	23	36500	1	21
32103	9	19	32466	36B	6	32628	9	7	36853	24	19
32172	35	6	32467	1	19	32632	16	6	36854	23	19
32173	33A	6	32468	20	21	32633	10	9	37309	31	21
32255	12	19	32469	37	6	32638	11	9	37310	31B	21
32256	3	17	32470	3	15	32642	33	23	37311	31C	21
32257	5	17	32471	14	15	32644	24	13	37314		6
32303	38	6	32472	21	15	32646	8	13	37370	13	6
32304	12	15	32473	4	7	32649	18	13	37371	12	5
32305	18	15	32474	11	7	32650	26	14	37379	10	5
32306	6	23	32475	34	23	32654	36	14	116311	3	21
32307	17	19	32477	8	9	32657	1	13	124070	32	14
32308	7	23	32478	8A	7	32661	12	13			
32310	22	13	32480	14	19	32662	15	13			

Part No.	Page No.	Part No.	Page No.	Part No.	Page No.	Part No.	Page No.
80136	13, 14, 21	80664	9	80746	17	84538	13, 23
80140	5	80671	5, 19, 21, 23	80750	21	84581	9
80143	21	80672	5, 6, 7, 9, 10, 13, 21, 23	80751	14, 15	84622	10
80157	5, 19	80673	5, 6, 9, 13, 14, 15, 17, 19, 21	80765	7, 13, 14, 21	84664	5
80161	9	80674	5, 7, 9, 10, 13, 15, 17, 19, 21, 23	80768	19	84701	19
80183	5, 15, 17, 19	80675	9, 10, 17	80772	9	84727	23
80218	9, 15	80679	5	80790	15	84792	9
80226	5	80680	9	80801	9	84826	19
80256	9, 10, 17	80681	9, 19	80814	6	84848	13
80269	19	80682	5	80856	21	84851	5, 9, 15, 17, 19, 23
80287	9	80691	6, 7, 10, 13, 15, 23	80862	6	84859	7
80327	9	80692	15, 19	80869	13, 23	84867	5, 9, 13, 15, 21
80353	21	80693	7	80967	21, 23	84890	5, 9
80373	15	80696	21, 23	81547	5, 9	84926	19
80389	15	80698	6, 23	81561	15	84929	7, 10, 13
80391	7, 13, 14	80702	17	81643	9, 10, 13, 15, 17, 19, 23	84930	15
80399	14	80710	6, 7, 13, 14, 19, 21, 23	84018	19	84931	5, 7, 9, 10, 13, 21, 23
80430	19	80711	19, 23	84069	14	84942	5
80435	19	80714	7, 23	84254	6	84944	9, 17
80459	23	80719	17	84260	21	84945	9, 23
80514	13	80720	13, 14	84294	19	84946	5
80536	17	80734	13	84296	21	84956	7, 13, 14, 19
80593	6	80735	7, 13, 19	84303	7	84957	6, 7, 23
80601	5, 19, 21	80737	15	84306	5, 7, 9, 10, 21	84980	23
80602	5, 9, 13, 14, 15, 17, 19, 21	80739	7	84322	14	84989	7
80603	9, 10, 17	80740	6, 21	84362	17	87138	5
80622	21, 23	80741	6, 23	84378	13, 14	87167	17
80624	6, 9, 21	80742	13, 15, 23	84382	23	87173	9, 23
80643	14, 23			84383	7	87187	5
80647	23			84471	9	87324	19
80652	23			84534	23		
80661	21			84535	5, 6		



NEW HOLLAND MACHINE COMPANY

Division of Sperry Rand Corporation

NEW HOLLAND, PENNSYLVANIA